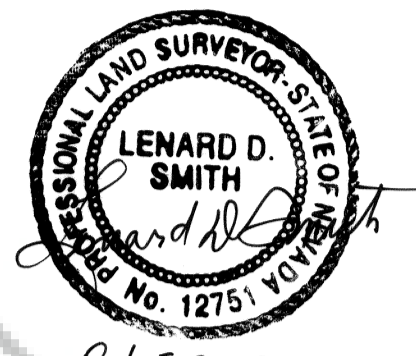


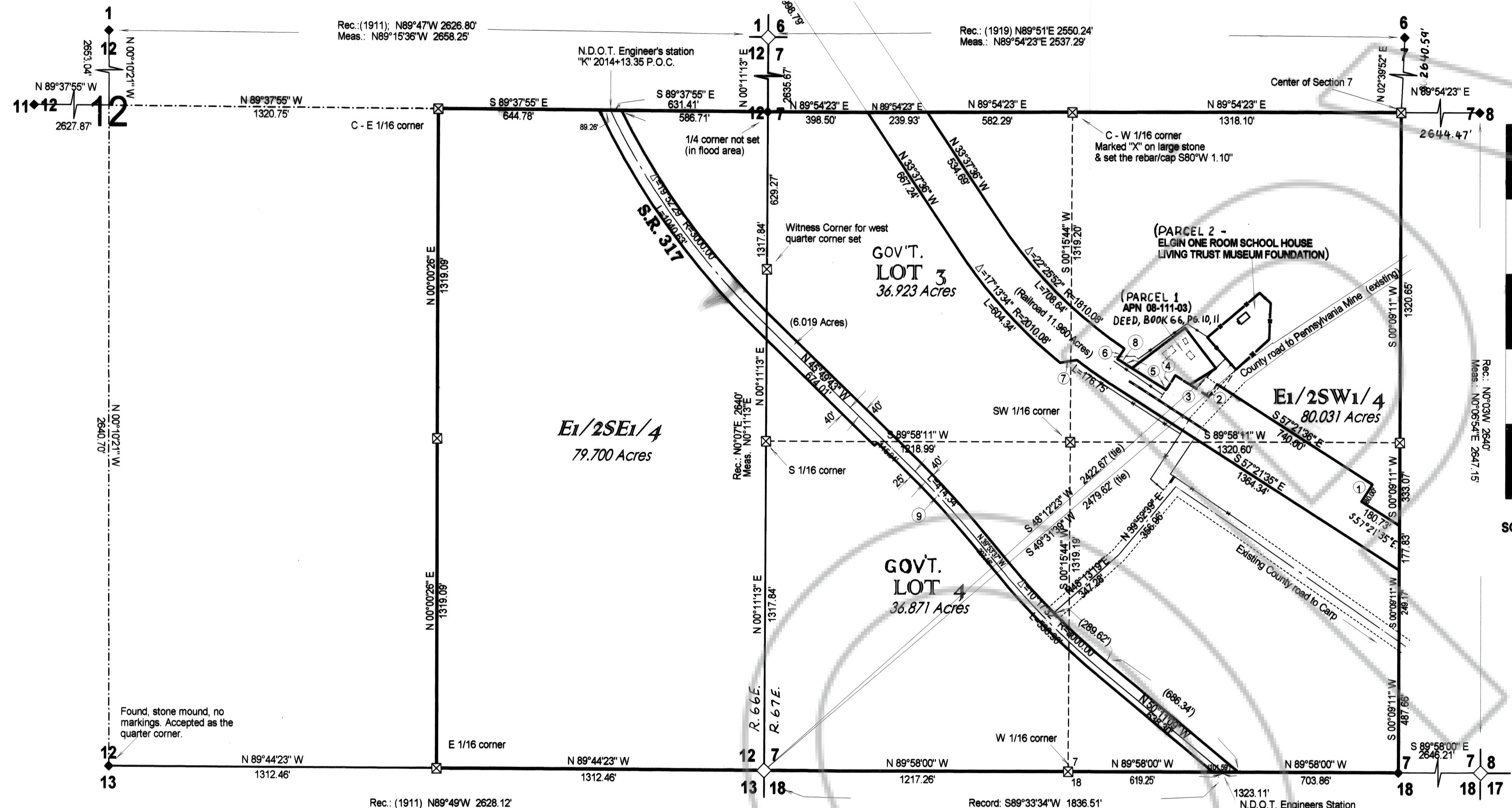
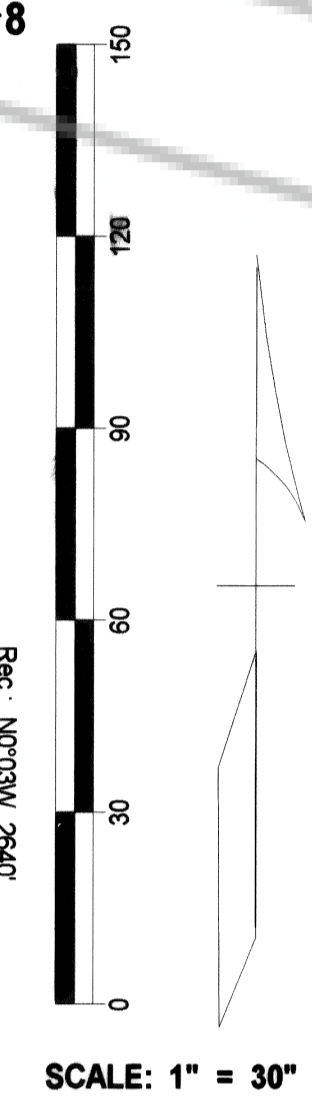
SURVEYOR'S CERTIFICATE

I, Lenard D. Smith, a Professional Land Surveyor registered in the State of Nevada certify that:

1. This plat represents the results of a survey conducted under my direct supervision at the instance of BRADSHAW INC.
2. The lands surveyed lie within Section 7, Township 7 South, Range 67 East, M.D.M. The survey was completed on September 8, 2000.
3. This plat complies with the applicable state statutes and any local ordinances in effect on the date that the governing body gave its final approval.
4. The monuments depicted on the plat are of the character shown, occupy the positions indicated and are of sufficient number and durability.



Oct 5, 2000
Lenard D. Smith P.L.S. 12751



LEGEND

- ⊠ Set 5/8 rebar & 2" aluminum cap stamped L Smith PLS 12751 with corner description
- ◆ Found 6 L O Brass Cap quarter corner
- ◇ Found 6 L O Brass Cap Section corner

BASIS OF BEARINGS

The south line of section 7 as recorded in original 1911 G.L.O. Survey notes as N89°58'W 5233.14'. The 1919 Survey notes give N89°55'E 5174.4'

MAP REFERENCES:

Deed for State Route 317 Book 10, Page 316, Real Estate Deeds, Lincoln County, Nevada
 Union Pacific Railroad Map of Elgin, Nevada vicinity #J0302
 General Land Office survey notes
 Parcel Map Plat Book B, Page _____, Lincoln Co., Nev. Records
 Parcel Map Plat Book B, Page _____, Lincoln Co., Nev. Records

LINE DIMENSIONS		
1	N32°38'24"E	80.00'
2	S32°38'24"W	80.00'
3	N57°21'36"W	160.00'
4	S32°38'24"W	70.00'
5	N57°21'36"W	188.10
6	N33°56'36"E	50.00'
7	S80°45'33"W	68.87'
8	CURVE: Delta 01°18'07", R = 1860.1', L = 42.27'	
9	CURVE: Delta 05°56'06", R = 4000', L = 414.34'	

AREA MEASUREMENTS		
DESCRIPTION	ACRES	TOTALS
E1/2SE1/4	79.700	
GOVT. LOT 3	36.923	
GOVT. LOT 4	36.871	
E1/2SW1/4	80.031	233.525
SR 317	6.019	
UP Railroad	11.960	
Co. Road (approx)	4.1	
APN 08-111-03	0.957	
SCHOOL FOUND.	0.959	-23.995
TOT. BRADSHAW PROP.	209.530	Ac.

RECORDER'S CERTIFICATE
 File number 115427
 Filed at the request of Lenard D. Smith
 Filed in Plat Book B, Page 345
 Date Oct 20, 2000 at 4:57 p.m.
 LESLIE BOUCHER, RECORDER
Leslie Boucher
 17.00



RECORD OF SURVEY
FOR BRADSHAW, INCORPORATED
IN LOTS 3 & 4 AND THE E1/2SW1/4 SECTION 7,
T.7S., R.67E., M.D.M. AT ELGIN,
LINCOLN COUNTY, NEVADA
AND E1/2 SE 1/4 SECTION 12, T.7S., R.66E., M.D.M.