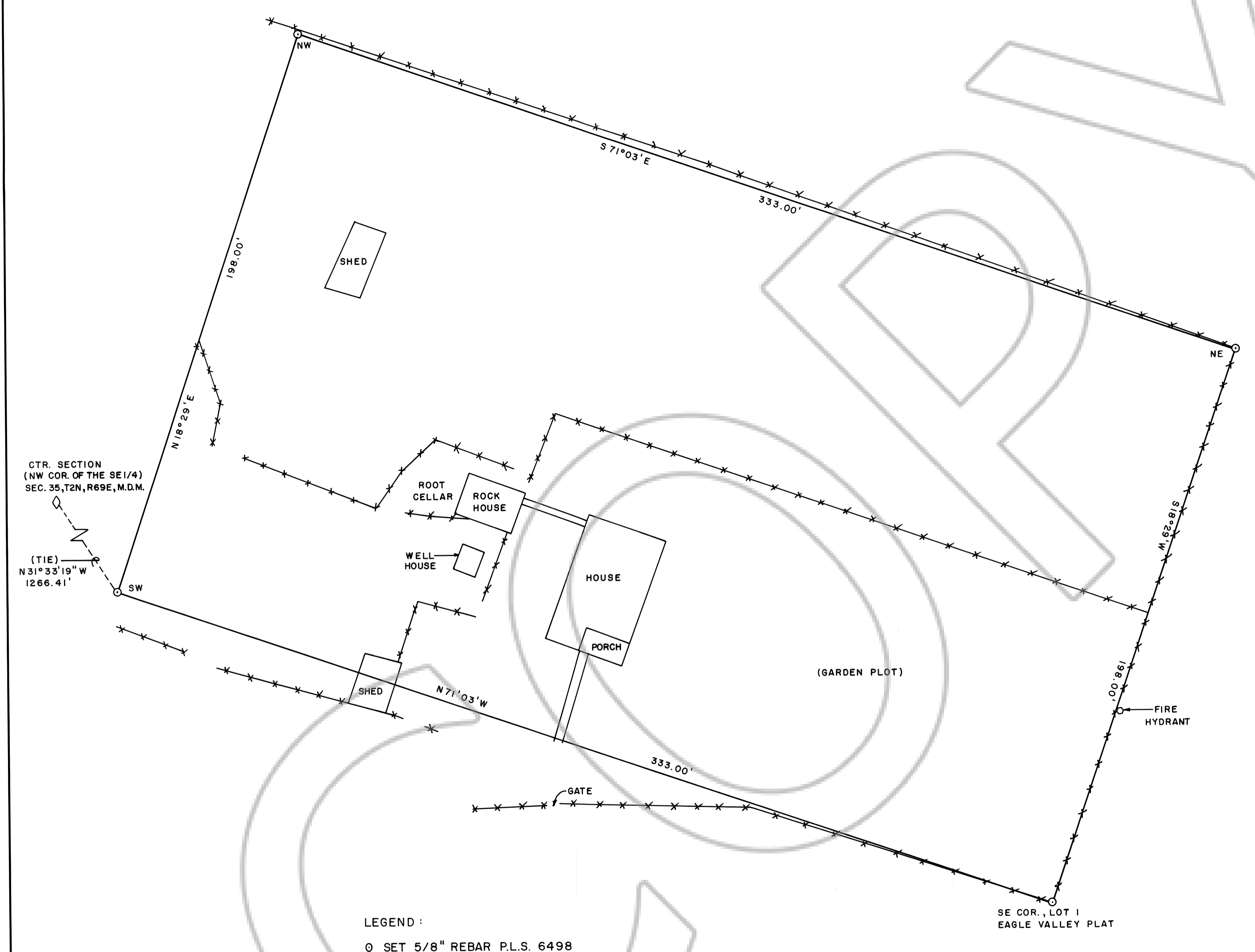


SURVEYOR'S STATEMENT

I, FRANK C. HULSE, a Professional Land Surveyor within the State of Nevada, do hereby certify that this Record of Survey, consisting of one sheet, correctly and accurately delineates a retracement survey made by me at the request of VERA H. FLINSPACH TRUST. Survey is of a portion of the LOT 1, Eagle Valley Plat, Ursine, Nevada, within Section 35, T2N, R69E, M.D.M. All monuments are of the character noted and occupy the positions shown hereon. This survey was completed on the 23rd day of May, 1995, and conforms to the definitions and provisions of N.R.S. 625.340 thru 625.380, inclusive.

PROFESSIONAL LAND SURVEYOR
FRANK C. HULSE
NO. 6498
21 June 1995
FRANK C. HULSE
P.L.S. 6498

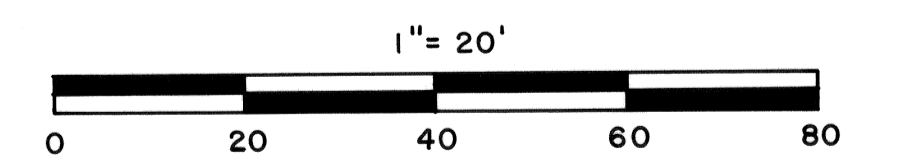
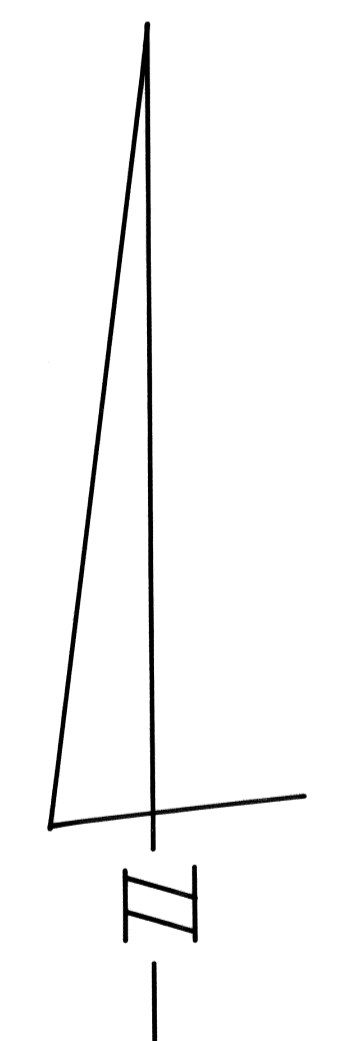


CTR. SECTION
(NW COR. OF THE SE 1/4)
SEC. 35, T2N, R69E, M.D.M.

(TIE)
N 31° 33' 19" W
1266.41'

LEGEND:
O SET 5/8" REBAR P.L.S. 6498

SE COR., LOT 1
EAGLE VALLEY PLAT



NO. 114971
114971
FILED AND RECORDED AT REQUEST OF
Frank Hulse
August 11, 2000
47 MINUTES 3 SECONDS
PM IN BOOK B OF DEPT. OF
RECORDS PAGE 328 LINCOLN
COUNTY, NEVADA
Allie Bruner
COUNTY CLERK
\$17.00

RECORD OF SURVEY OF A PORTION
LOT 1 - EAGLE VALLEY PLAT -
URSINE, NEVADA, WITHIN SEC. 35,
T2N, R69E, M.D.M. PREPARED AT THE
REQUEST OF ALLYSON HAMMOND.

FRANK C. HULSE/s.f. MAY 1995