

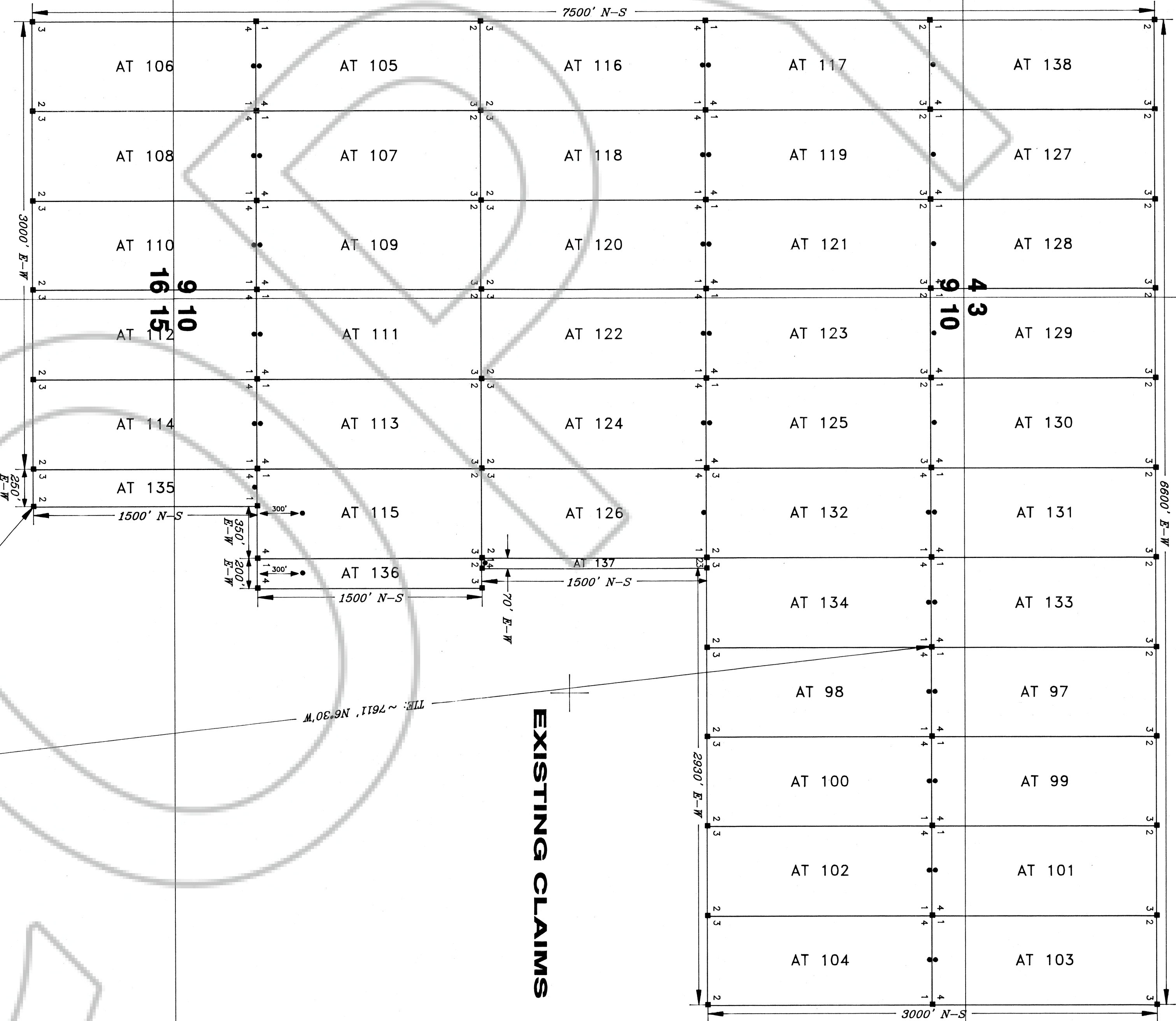
R 68 E

EXISTING CLAIMS

T 7N

EXISTING CLAIMS

EXISTING CLAIMS



16 15
21 22

EXPLANATION

- Monuments of Location are set with 1.5"x1.5"x4" wood posts.
- Claim corners are set with 1.5"x1.5"x4" wood posts.

All claims measure 600' x 1500' except for the following:
 AT 135 measures 250' x 1500'
 AT 136 measures 200' x 1500'
 AT 137 measures 70' x 1500'

Monuments of Location are set 20' into claim except for AT 115 and AT 136 which are set 300' into claim.

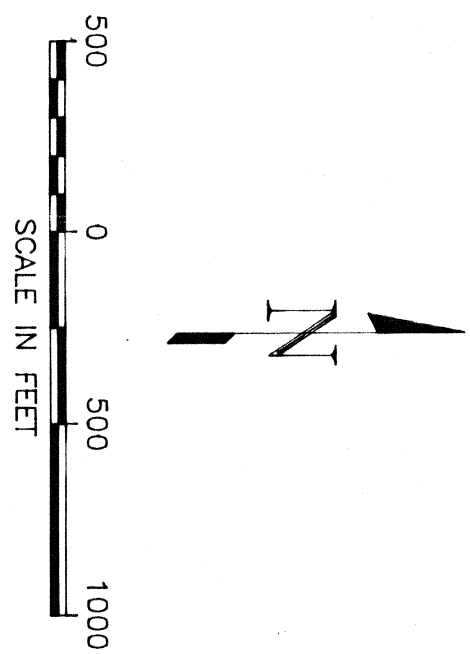
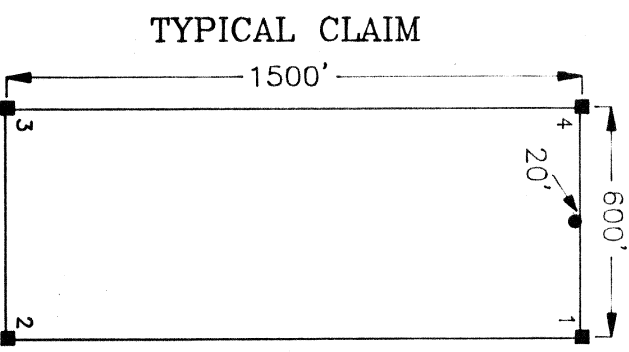
LOCATION DATES:

AT 105-126, 135-137 December 2, 1999
 AT 97-104, 127-134, 138 December 3, 1999

LOCATOR:

Cordilleran Exploration Co., LC
 5775 E. 1st Street
 Reno, NV 89502

TIES:
 The SE Corner (2) of AT 135 bears approximately 2388' N48°W from USM 4843 located in Sec. 15, T7N-R68E.
 The SW Corner (1) of AT 97 bears approximately 7611' N63°0'W from USM 4843 located in Sec. 15, T7N-R68E.



No. 114154

FILED AND RECORDED AT REQUEST OF
 Cordilleran Exploration Co.
 Feb 10, 2000
 2:11 MINUTES PAST 4 O'CLOCK
 DE MIN BOOK 146 OF OFFICIAL
 RECORDS, PAGE 466 LINCOLN
 COUNTY, NEVADA

Jessie Brucher
 COUNTY RECORDER

BOOK 146 PAGE 466

CORDILLERAN EXPLORATION CO., LC
 AT 97-138
 Lode Mining Claims

Drawn By: Cordilleran Exploration
 Date: January 3, 2000
 View: Strip
 Project: Rights