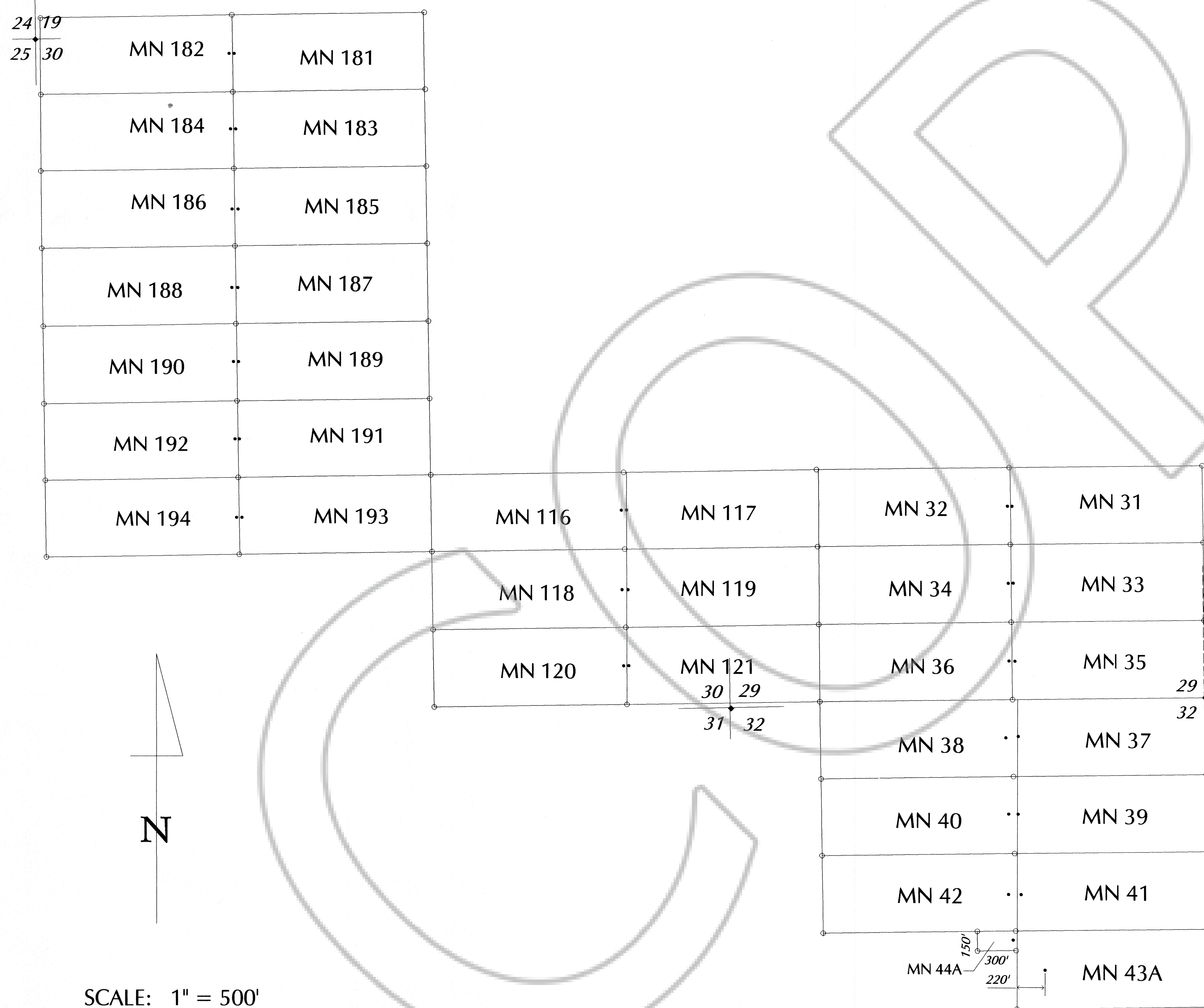


T 1 N

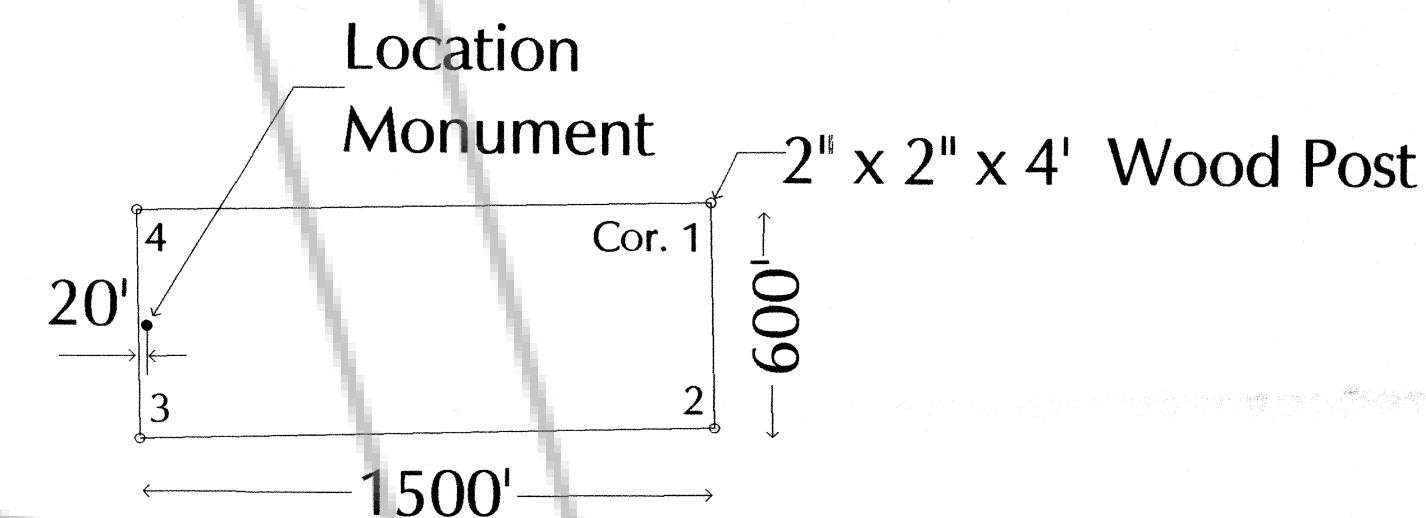
MN 31-42, 43A, 44A, 116-121, 181-194 Lode Claims

R 70 E
R 71 E



SCALE: 1" = 500'

TYPICAL CLAIM:



LOCATOR: Randall L. Moore
860 Lyman Av.
Reno, NV 89509

LOCATION: Sections 19, 29, 30, 32 T 1 N, R 71 E, M.D.B.M.

TIE POINT: The SE corner of MN 35 is located at the SE corner of Section 29, T 1 N, R 71 E, M.D.B.M., Lincoln County, Nevada

LOCATION	September 1, 1999	MN 31-42, 43A, 44A
DATE:	September 1, 1999	MN 116-121
	September 1, 1999	MN 181-194

NOTE: All claims are 1500' x 600' with location monuments located 20' in from end lines, unless otherwise noted. All monuments are 2" x 2" x 4' wooden posts.

NO. **113674**
 FILED AND RECORDED AT REQUEST OF
Phelps Dodge
 Nov 19 1999
 AT 3:55 MINUTES PAST 1 O'CLOCK
 PM IN BOOK 145 OF REC. VOL.
 RECORDS PAGE 157
 COUNTY, NEVADA
Leslie Tucker
 COUNTY CLERK
 By *Dereen Suwers*
 Deputy