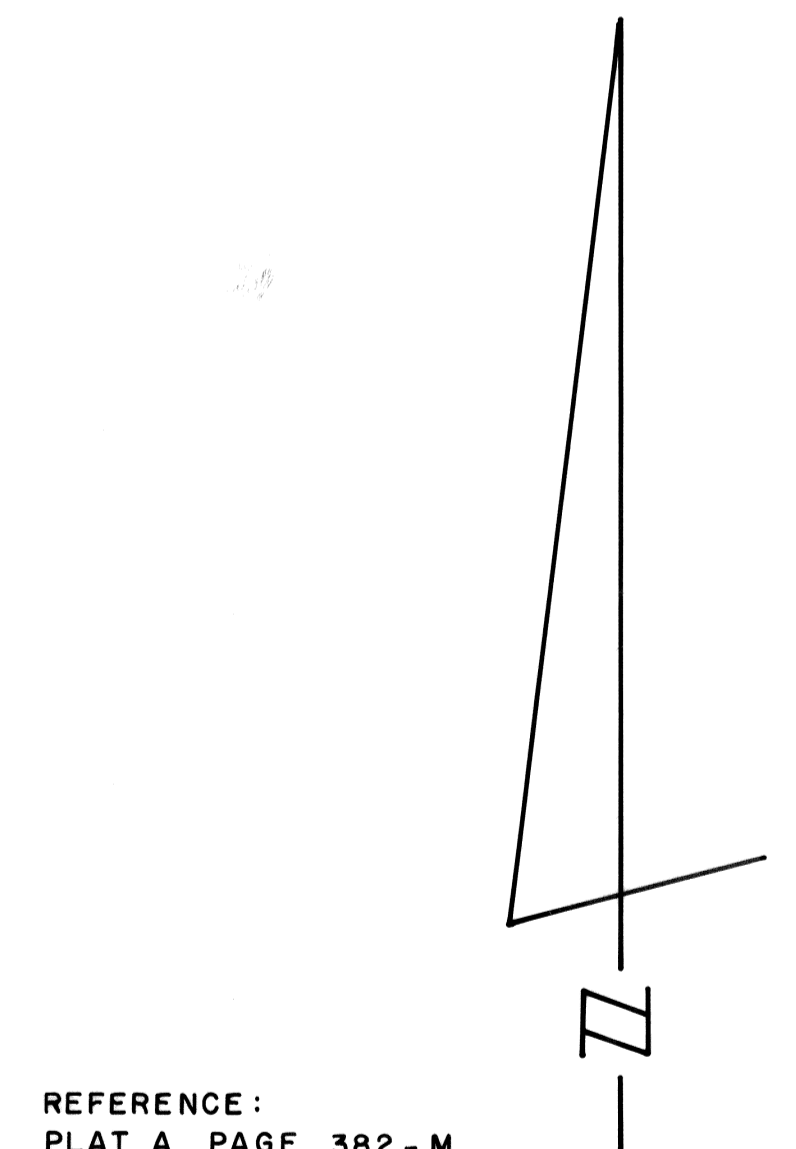
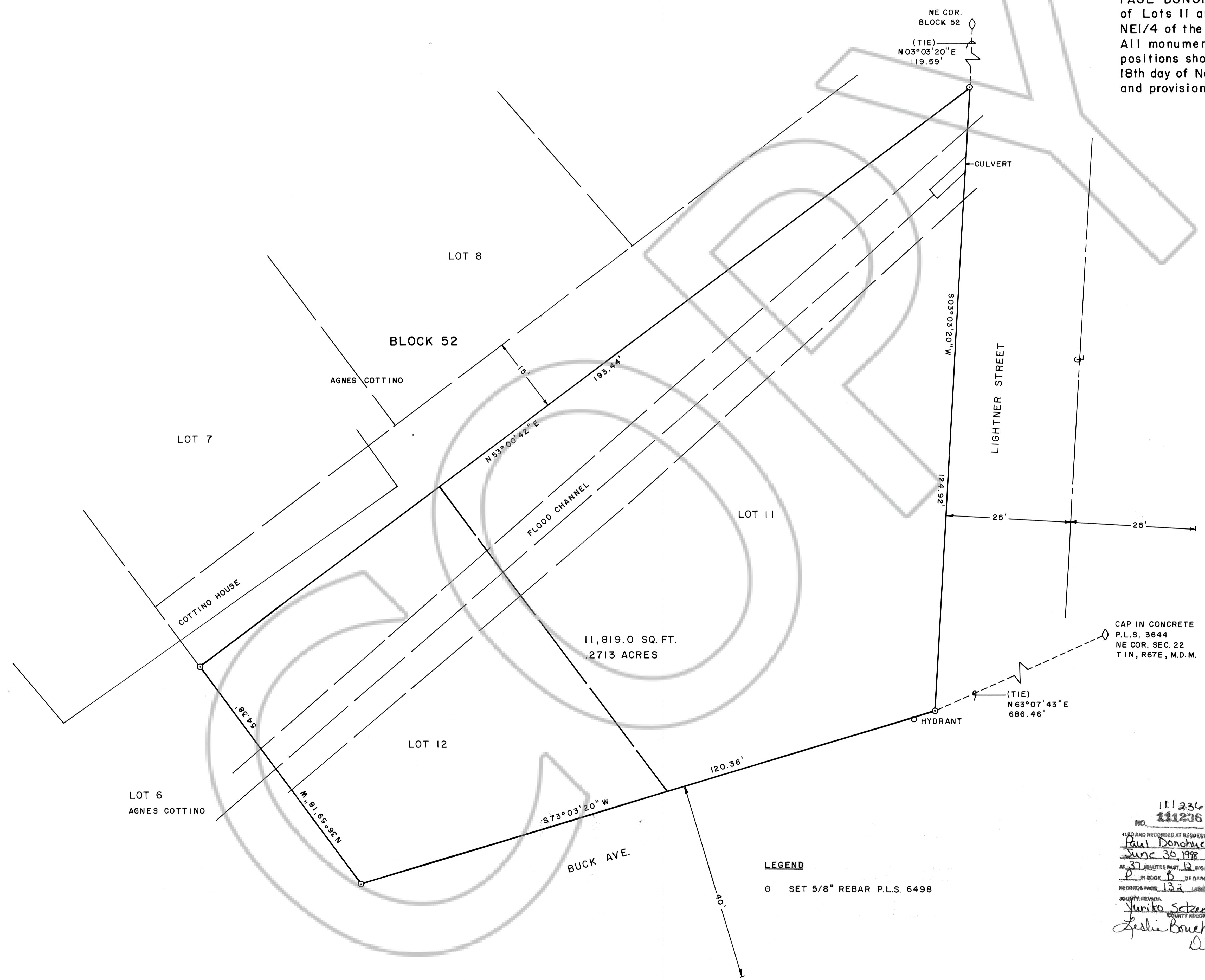
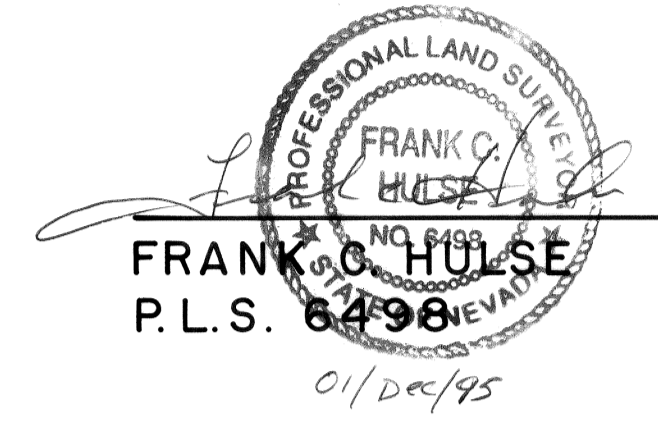


LOTS 11 & 12, BLOCK 52
NE 1/4 NE 1/4 SECTION 22, T1N, R67E, M.D.M.

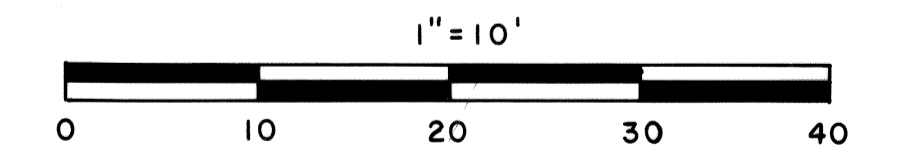
SURVEYOR'S STATEMENT

I, FRANK C. HULSE, a Professional Land Surveyor within the State of Nevada, do hereby certify, that this Record of Survey, consisting of one sheet, correctly and accurately delineates a survey made by me at the request of ANTHONY PAUL DONOHUE and SHONNA LEE DONOHUE. Survey is of Lots 11 and 12 of Block 52, Pioche Townsite within the NE 1/4 of the NE 1/4 of Section 22, T1N, R67E, M.D.M. All monuments are of the character noted and occupy the positions shown hereon. This survey was completed on the 18th day of November, 1995, and conforms to the definitions and provisions of N.R.S. 625.340 thru 625.380, inclusive.



REFERENCE:
PLAT A PAGE 382 - M

(PAGE 13 OF 15,
BULLOCH BROS. SURVEY
PIOCHE TOWNSITE)



LEGEND
○ SET 5/8" REBAR P.L.S. 6498

111236
NO. 111236
FILED AND RECORDED AT REQUEST OF
Paul Donohue
June 30, 1998
AT 37 MINUTES PAST 12 O'CLOCK
P. M. IN BOOK 6 OF OFFICIAL
RECORDS PAGE 132
COUNTY, NEVADA
Yuniko Setzer
Leslie Baucher
Deputy

RECORD OF SURVEY OF LOTS 11 & 12
OF BLOCK 52, PIOCHE TOWNSITE,
WITHIN NE 1/4 NE 1/4 SECTION 22,
T1N, R67E, M.D.M. PREPARED AT THE
REQUEST OF A. PAUL AND SHONNA
DONOHUE.
FRANK C. HULSE/s.f. NOV. 1995