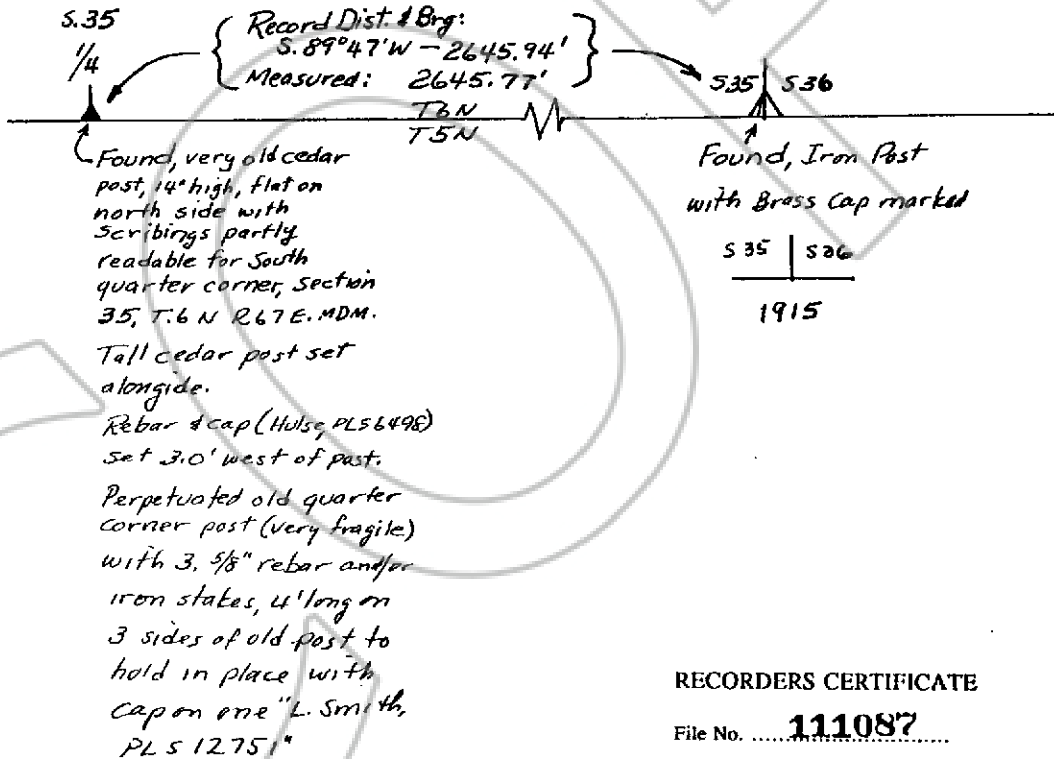


**CORNER RECORD**

**SURVEYOR'S CERTIFICATE**

1. Lenard D. Smith, a Professional Land Surveyor registered in the State of Nevada, certify that:
1. This corner record represents the establishment or restoration of a corner or accessory to a corner conducted under my direct supervision.
2. The monument or accessories perpetuated lie within Section 35, Township 6 N., Range 67 E., M.D.M., Lincoln County, Nevada. The establishment or restoration was completed on May 22, 1998.
3. This corner record is recorded as required by NRS 329 and complies with the Nevada Administrative Code Standards of Practice for Professional Land Surveyors for Corner Records and any local ordinances in effect of the date that the establishment or restoration was completed.
4. The monument or witness monument and accessories found are of the character shown, occupy the positions indicated and are of sufficient durability.

Reference: B.L.M. Survey notes of "Retracement and Resurvey of the First Standard Parallel North through Range 67 East."



**RECORDERS CERTIFICATE**

File No. 111087

Recorded at the request of  
Lenard D. Smith

Date June 3, 1998 at 4:30P.m.

Filed Book 135 Page 144  
Lincoln County, Nevada

Yuriko Sattzer, Recorder

*Julie Boucher, Deputy*