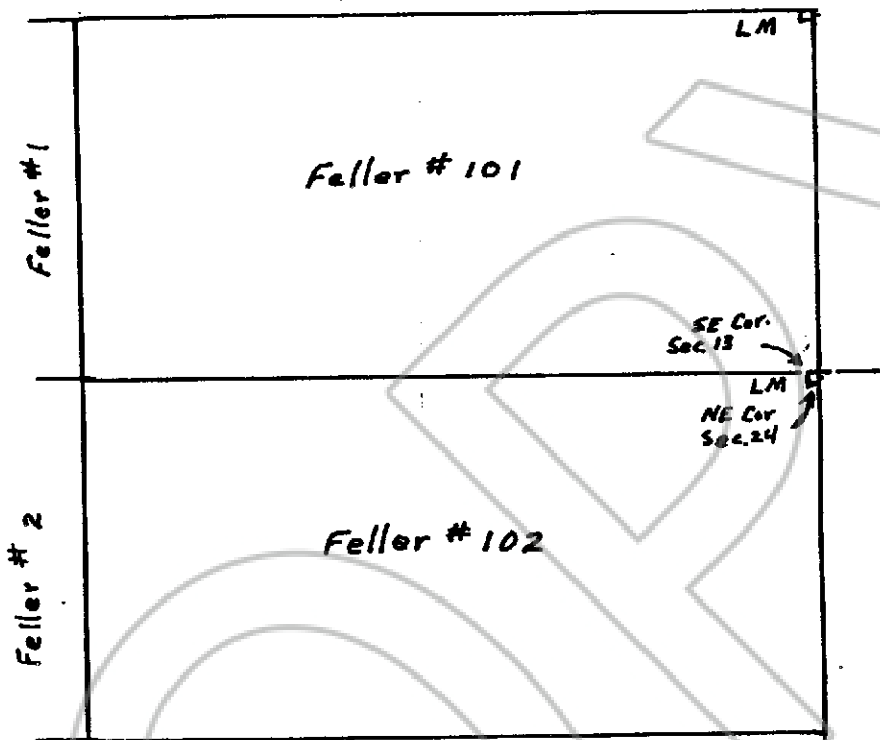


Lincoln County



The Location Monuments are located as follows:

Feller # 101 is located in the S½SE¼ of Section 13, T. 7 S., R. 70 E., MDB&M. The Location Monument is at the North East Corner of the claim.

Feller # 102 is located in the N½NE¼ of Section 24, T. 7 S., R. 70 E., MDB&M. The Location Monument is at the North East Corner of the claim.

Sections 13 and 24 are surveyed sections.

MAP OF FELLER # 101 and FELLER # 102 PLACER MINING CLAIMS

Located in Sections 13 and 24, T. 7 S., R. 70 E., MDB&M Lincoln County, Nevada. Located on March 23, 1998

Russell C. Feller, Agent  
1169 E. 1050 East, St. George, Utah 84770

No. **110752**  
FILED AND RECORDED AT REQUEST OF  
**CHARLES D. SNOW**  
MARCH 26, 1998  
AT 01 MINUTES PAST 1 O'CLOCK  
P. M. IN BOOK 133 OF OFFICIAL  
RECORDS PAGE 444 LINCOLN  
COUNTY, NEVADA.

**TURIKO SETZER**  
COUNTY RECORDER  
BY Leila Bouche DEPUTY

BOOK 133 PAGE 444

