

11

12

14

13

23

26

35

25

36

128	129	158
130	131	159
132	133	160
134	135	161
136	137	162
138	139	163
140	141	164
142	143	165
144	145	166
146	147	167
148	149	168
150	151	169
152	153	170
154	155	171
156	157	172

4500' E-W

9000' N-S

LOCATION DATE:

9/3/97 MAG 1-34
9/4/97 MAG 35-57
9/5/97 MAG 58-172

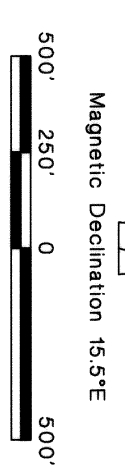
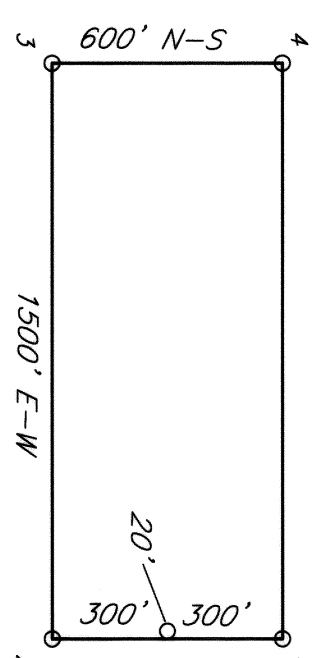
COMPLETION DATE:

11/5/97 FOR ALL CLAIMS

NOTES:

All monuments are 1.5"x1.5"x4" long wooden posts with scribed metal tags.
 All corners are 1500' x 600' with LM's 20' in from end centers except:
 MAG 85 - 1500' x 600' with LM 700' in from east end
 MAG 86 - 1500' x 600' with LM 400' in from east end
 MAG 88 - 1500' x 600' with LM 400' in from east end
 MAG 89 - 1500' x 400' with LM 200' in from east end
 MAG 100 - 1500' x 600' with LM 200' in from east end
 MAG 101 - 1500' x 600' with LM 200' in from east end
 MAG 102 - 1500' x 300' with LM 20' in from east end
 MAG 120 - 1500' x 300' with LM 20' in from east end

TYPICAL CLAIM:



NO. **110126**
 ALL RIGHTS RESERVED BY REQUEST TO:
AUR Resources (USA), Inc.
 November 17, 1997
 01. MONUMENTS NOT TO BE LOCATED
 CLAIMS BOOK 131 (SEE ORIGINAL)
 COUNTY PAGE 431 (LANCASHIRE)
 COUNTY RECORDS
 Jurisico Schenck
 Kevin Kuehner
 Deputy

AUR 1360 Greg Street, Suite 111
 Sparks, Nevada 89431
 (702) 358-4336
 Fax: (702) 358-3561

DELAMAR PROJECT
 LINCOLN CO., NEVADA
 MAG CLAIM MAP
 NO. 128 - 172

REVDATE: 11/5/97 PLOTDATE: 11/5/97
 REVISIONS: SCALE: 1"=500'
 C:\Delamar\AurMag128-172 11/05/97 13:46 RWF