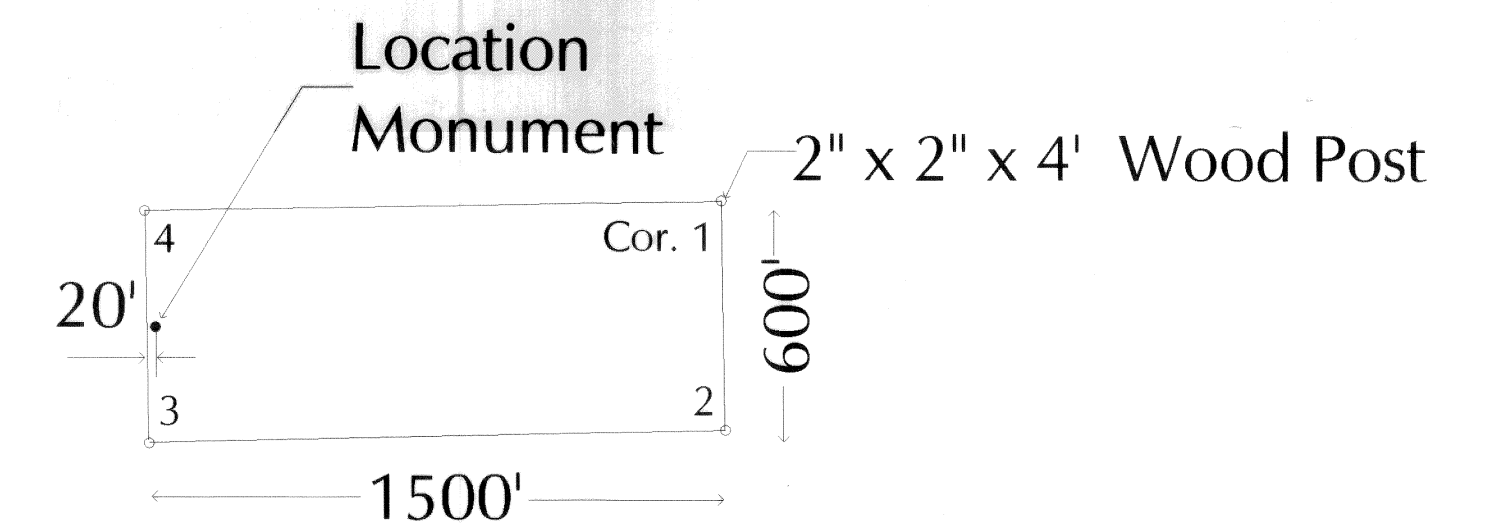


**MN 16, 18, 20, 22, 23-36, 100-121,  
181-198, 249-254, 277, 278, 311  
Lode Claims**

TYPICAL CLAIM:



LOCATOR: Cambior Exploration USA, Inc.  
230 So. Rock Blvd., Suite 23  
Reno, NV 89502

LOCATION: Sections 19, 20, 29, 30 T 1 N, R 71 E, M.D.B.M.  
Sections 24, 25 T 1 N, R 70 E, M.D.B.M.

TIE POINT: The SE corner of MN 35 is located at the  
SE corner of Section 29, T 1 N, R 71 E,  
M.D.B.M., Lincoln County, Nevada  
The NE corner of MN 277 is approximately  
425'N and 320'E of the SE corner of  
Section 24, T 1 N, R 70 E, M.D.B.M.,  
Lincoln County, Nevada

LOCATION DATE: April 13, 1997 MN 16, 18, 20, 22, 23-36,  
114-121

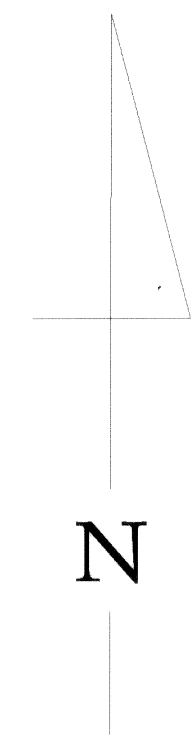
April 15, 1997 MN 100-113, 181-198

April 17, 1997 MN 277, 311

April 18, 1997 MN 249-254

April 20, 1997 MN 278

NOTE: All claims are 1500' x 600' with location  
monuments located 20' in from end lines,  
unless otherwise noted. All monuments  
are 2" x 2" x 4' wooden posts.



SCALE: 1" = 500'

T 1 N

R 70 E

R 71 E

				MN 100	MN 101	MN 16	
				MN 102	MN 103	MN 18	
			MN 278	MN 104	MN 105	MN 20	
		MN 182	MN 181	MN 106	MN 107	MN 22	
		MN 184	MN 183	MN 108	MN 109	MN 24	MN 23
MN 250	MN 249	MN 311	MN 186	MN 110	MN 111	MN 26	MN 25
MN 252	MN 251		MN 188	MN 112	MN 113	MN 28	MN 27
MN 254	MN 253		MN 190	MN 114	MN 115	MN 30	MN 29
			MN 192	MN 116	MN 117	MN 32	MN 31
			MN 194	MN 118	MN 119	MN 34	MN 33
			MN 196	MN 120	MN 121	MN 36	MN 35
			MN 198				

No. **109354**  
filed and recorded at request of  
**CAMBIOR EXP INC**  
**JULY 10 1997**  
At 52 minutes past 2 o'clock P.M.  
Lincoln County Nevada Recorder.  
*Janice DeBruin*  
COUNTY RECORDER