

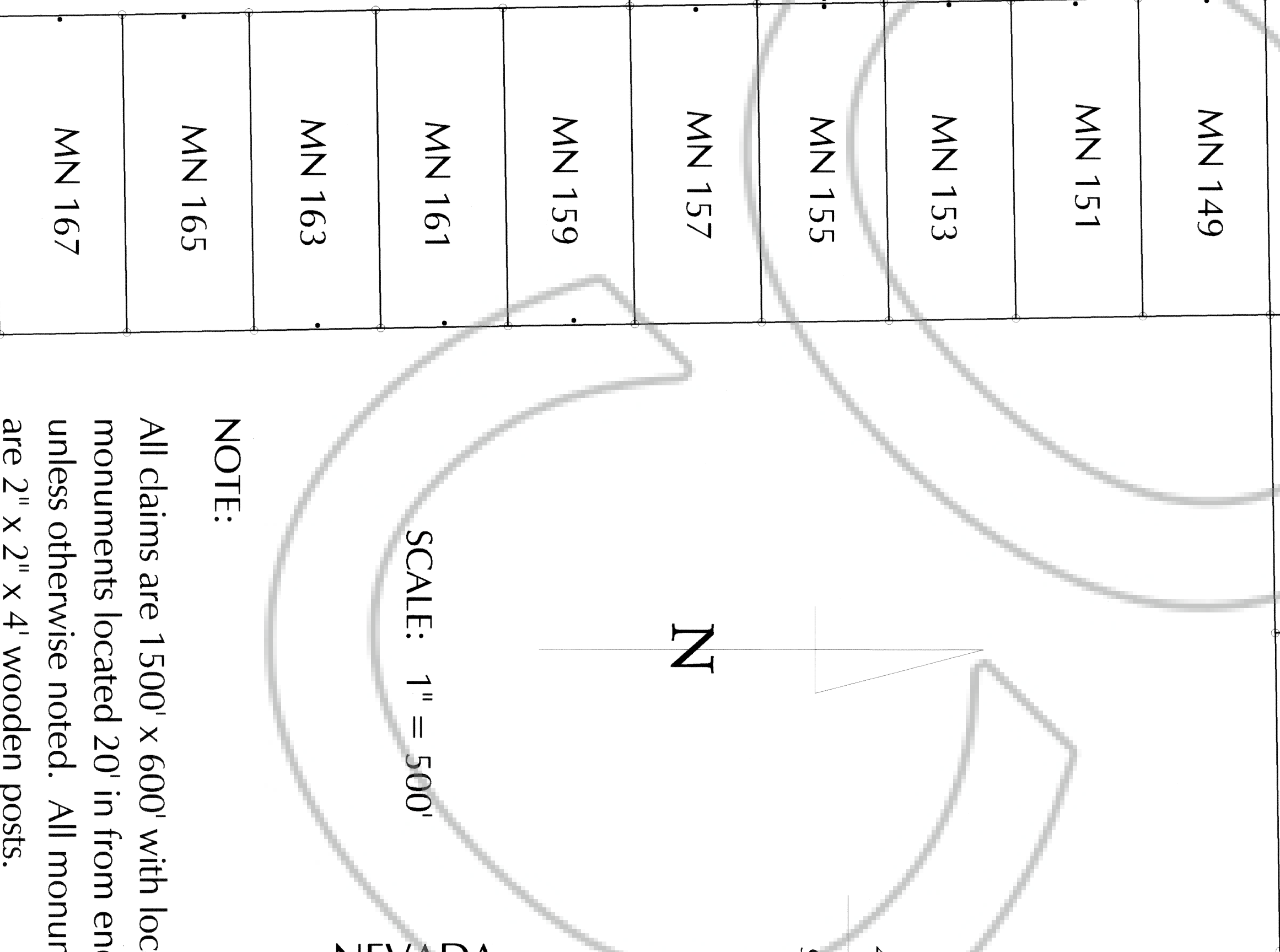
TYPICAL CLAIM:

LOCATOR: Gambior Exploration USA, Inc.
 230 So. Rock Blvd., Suite 23
 Reno, NV 89502

LOCATION: Sections 4, 5, 8, 9 T 1 S, R 71 E, M.D.B.M.
 Sections 31, 32 T 1 N, R 71 E, M.D.B.M.
 Lincoln County, Nevada

TIE POINT: The NE corner of MN 37 is located at the
 SE corner of Section 29, T 1 N, R 71 E, M.D.B.M.,
 Lincoln County, Nevada

LOCATION DATE: April 13, 1997 MN 37-42, 122-125
 April 14, 1997 MN 46, 126-139
 April 15, 1997 MN 45, 47-50, 199, 201,
 203, 205, 207, 209, 211
 April 18, 1997 MN 51, 52, 56, 57, 58, 59, 60, 61
 April 20, 1997 MN 53, 54, 55, 152-157, 159,
 161, 163, 165, 167
 April 21, 1997 MN 140-151
 May 10, 1997 MN 43A, 44A



SCALE: 1" = 500'

NOTE:

All claims are 1500' x 600' with location monuments located 20' in from end lines, unless otherwise noted. All monuments are 2" x 2" x 4' wooden posts.

MN 37-42, 43A, 44A, 45-61, 122-157,
 159, 161, 163, 165, 167, 199, 201,
 203, 205, 207, 209, 211
 Lode Claims