

CORNER RECORD

Filed as required by Statutes of Nevada, 1969, Chapter 329

Sheet 1 of 1 sheets.

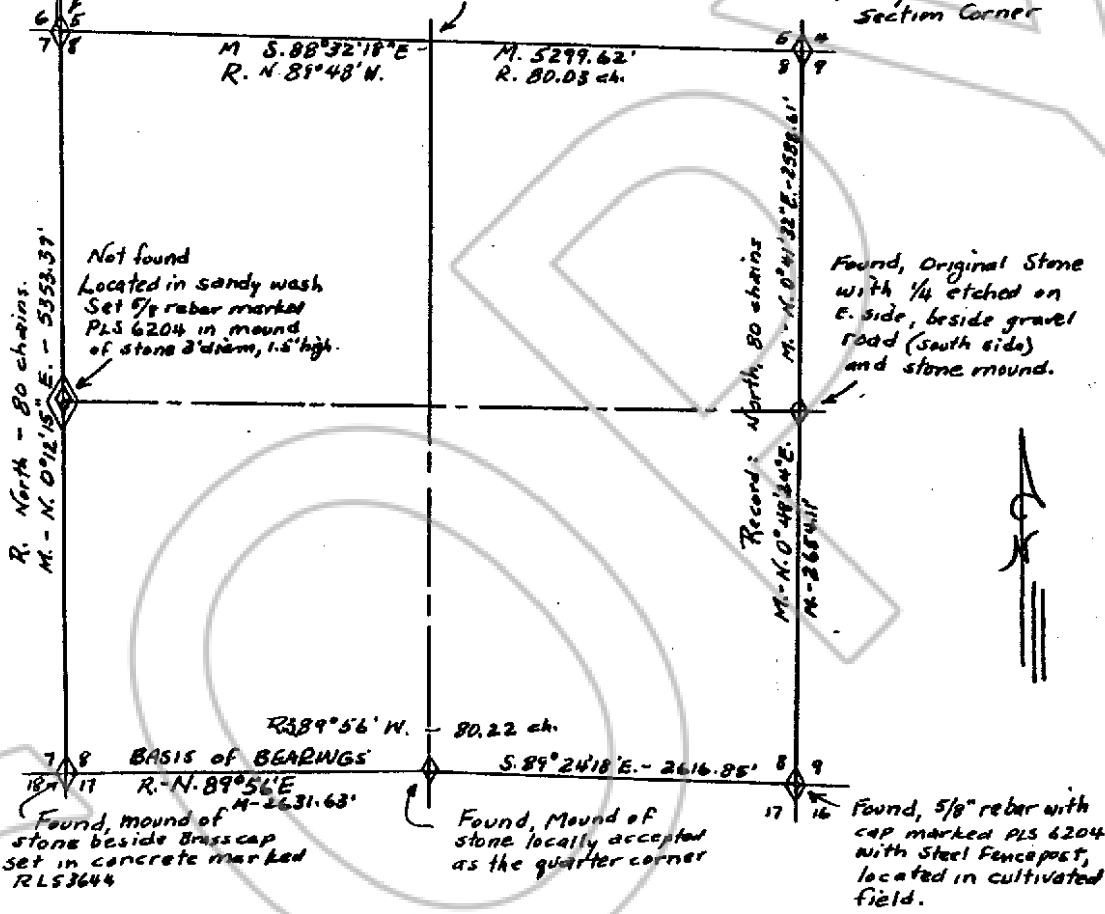
Sec. 8 Twp. 7 S. Range 61 E Mt. Diablo PM.

County of Lincoln State of Nevada.

Found, Brass Cap marked RLS 3644 set in concrete

Not found or set: In the town of Alamo.

Found: Hub & Tack under rock cairn 4' high, 2' in diameter. Locally accepted as the Section Corner



1" = 1,000'

SURVEYOR'S CERTIFICATE.

I, Carl D. Peterson, Professional Land Surveyor No. 6204 in the State of Nevada do hereby certify that the foregoing is a true, complete and accurate representation of the monument, or monuments, established, reestablished, monumented, remonumented, restored, rehabilitated, perpetuated or used as control in any survey, and mentioned in the foregoing Corner Record.

Date survey was completed 2/1/97 Date Corner Record filed



Accepted for filing on this day of 18 In the office of the County Recorder County, State of Nevada.

County Recorder By BOOK 127 PAGE 332

COPY

NO. **108806**

Filed And Recorded At Request Of

LENARD SMITH

APRIL 21, 1997

At 05 Minutes Past 10 O'Clock

A M In Book 127 Of Official Records

Page 332 Lincoln County Nevada.

YURIKO SETZER

County Recorder

BY Ludie Boucher, DEPUTY