

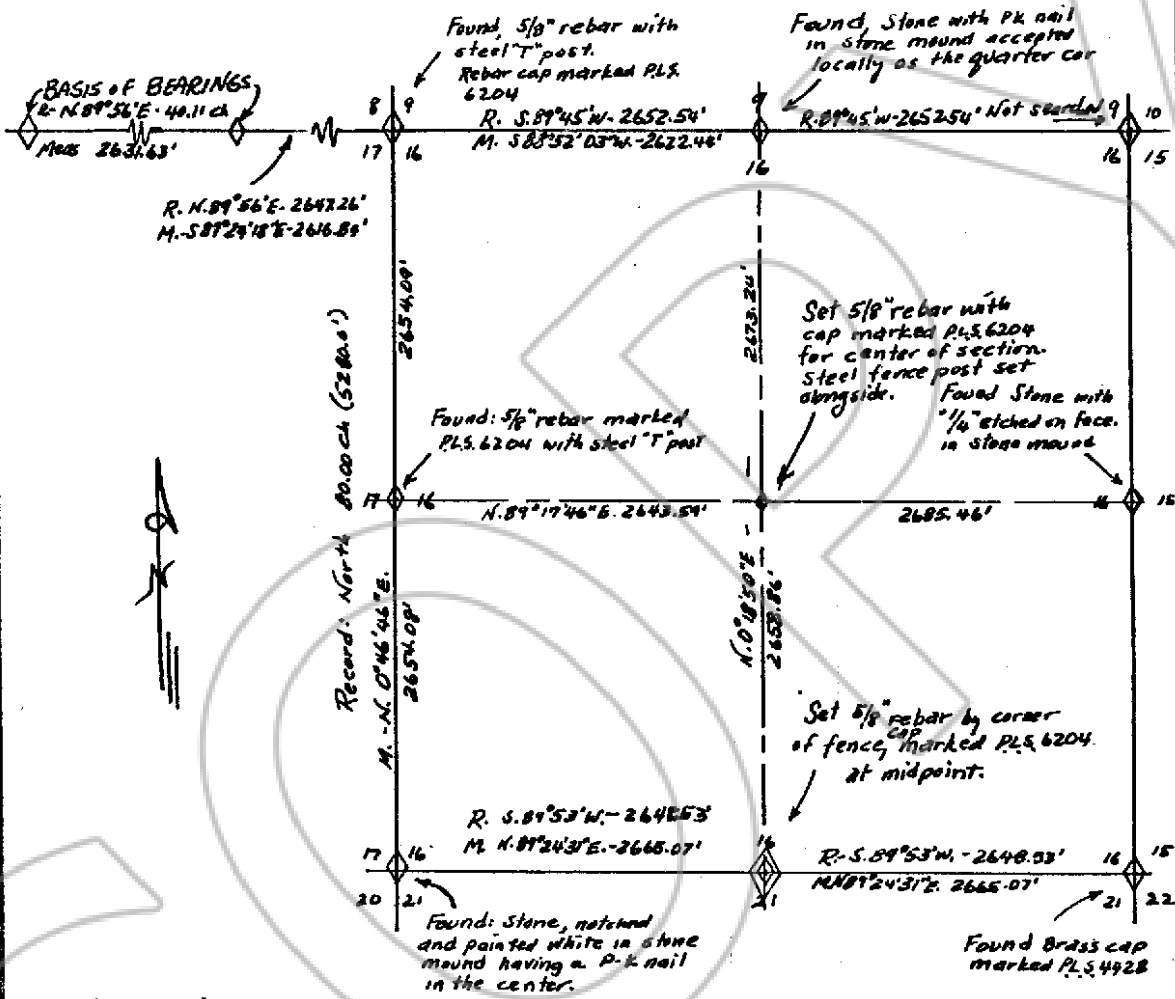
CORNER RECORD

Filed as required by Statutes of Nevada, 1969, Chapter 329

Sheet 1 of 1 sheets.

Sec. 16 Twp. 7 Range 61 Mt. Diablo P.M.

County of Lincoln State of Nevada.



1" = 1,000'

SURVEYOR'S CERTIFICATE.

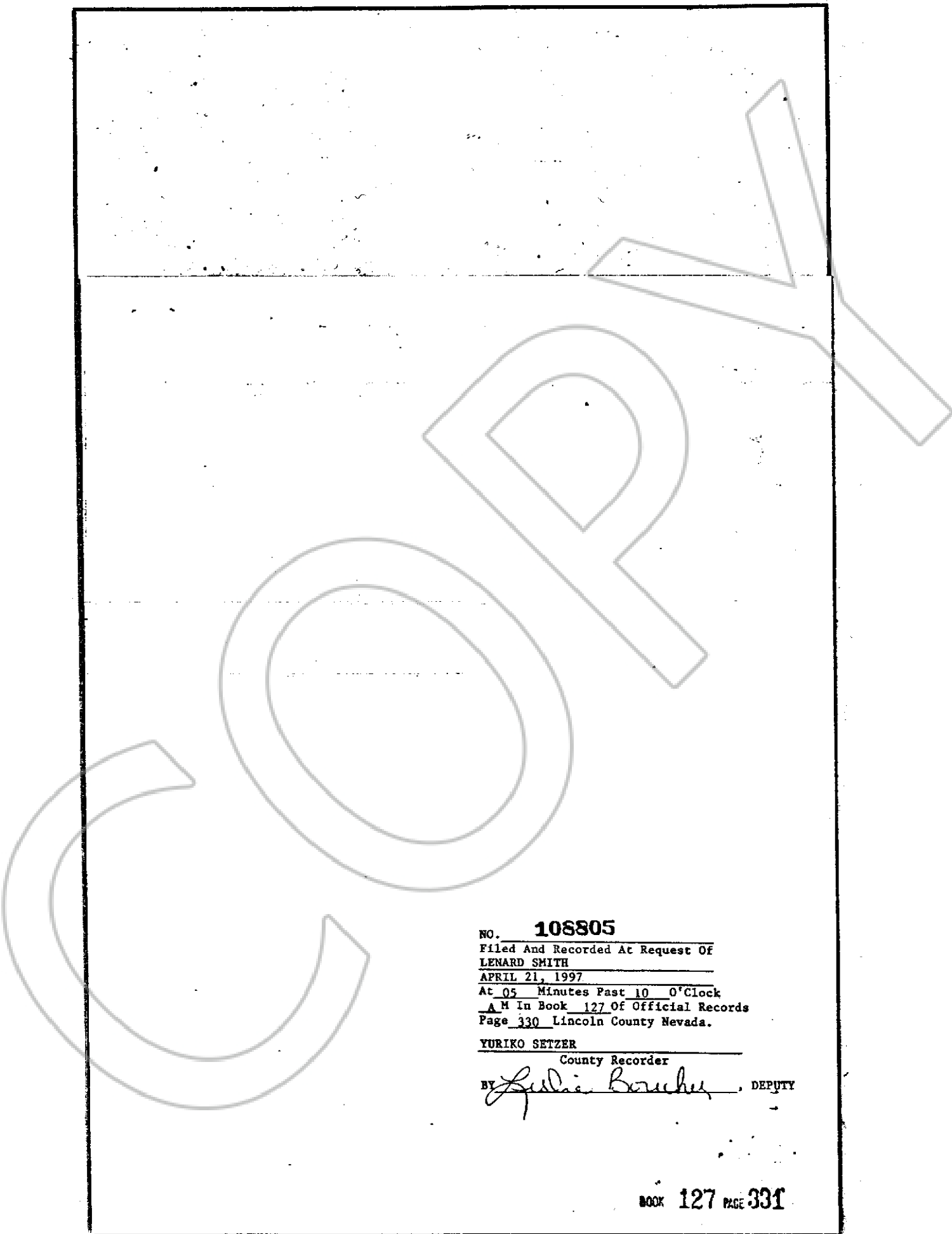
I, Carl D. Peterson, Professional Land Surveyor No. 6204 in the State of Nevada do hereby certify that the foregoing is a true, complete and accurate representation of the monument, or monuments, established, reestablished, monumented, remonumented, restored, rehabilitated, perpetuated or used as control in any survey, and mentioned in the foregoing Corner Record.

Date survey was completed 2/1/97
 Date Corner Record filed 2/1/97



Accepted for filing on this _____ day of _____, 19____
 In the office of the County Recorder _____ County, State of Nevada.

County Recorder _____
 By _____
 BOOK 127 PAGE 330



NO. **108805**
Filed And Recorded At Request Of
LENARD SMITH
APRIL 21, 1997
At 05 Minutes Past 10 O'Clock
A M In Book 127 Of Official Records
Page 330 Lincoln County Nevada.

YURIKO SETZER
County Recorder
BY *Ludie Boucher* DEPUTY