

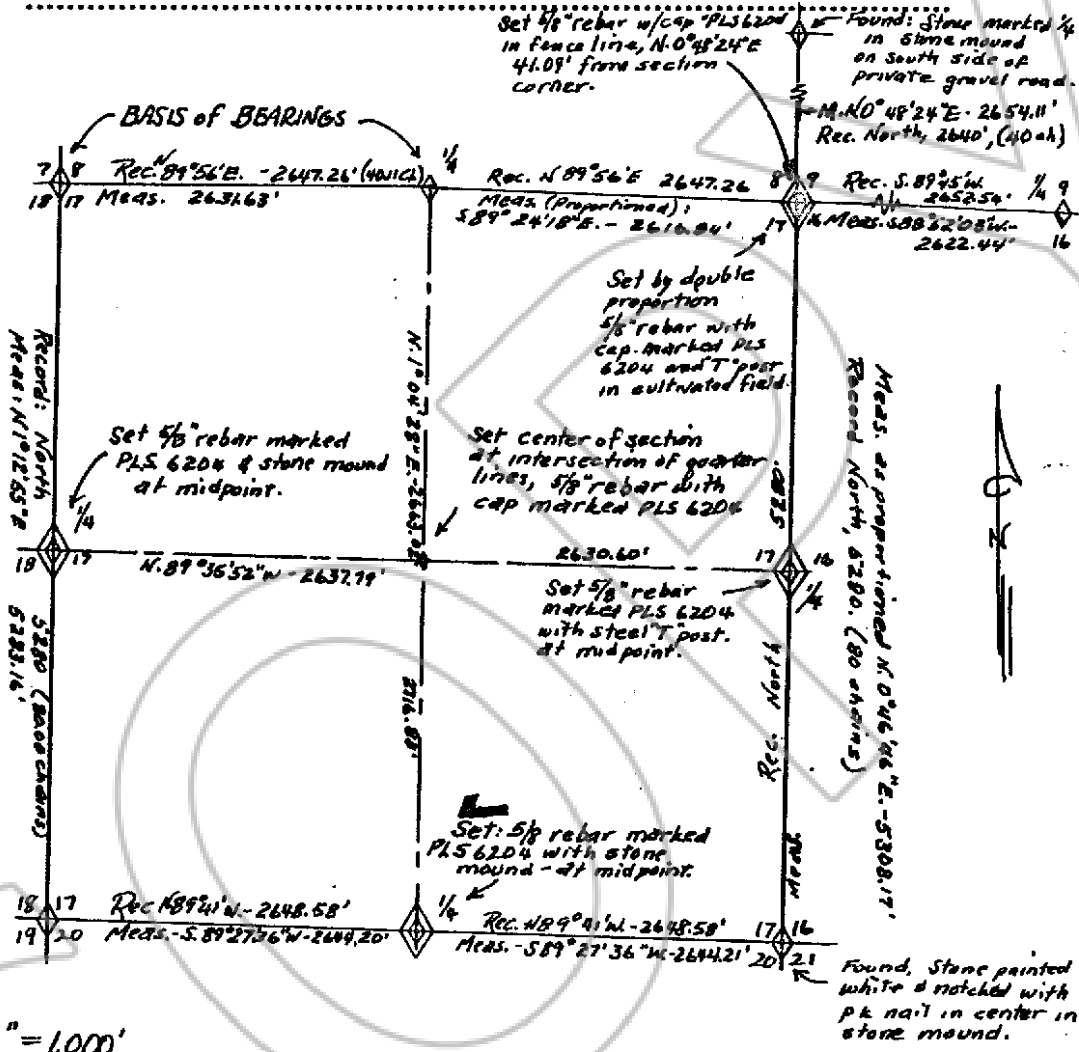
CORNER RECORD

Filed as required by Statutes of Nevada, 1989, Chapter 329

Sheet 1 of 1 sheets.

Sec. 17 Twp. 7.S. Range 61E Mt. Diablo P.M.

County of Lincoln State of Nevada.



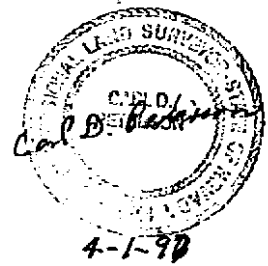
1" = 1,000'

SURVEYOR'S CERTIFICATE.

I, Carl D. Peterson, Professional Land Surveyor No. 6204 in the State of Nevada do hereby certify that the foregoing is a true, complete and accurate representation of the monument, or monuments, established, reestablished, monumented, remonumented, restored, rehabilitated, perpetuated or used as control in any survey, and mentioned in the foregoing Corner Record.

Date survey was completed 2/1/97  
Date Corner Record filed \_\_\_\_\_

Accepted for filing on this \_\_\_\_\_ day of \_\_\_\_\_ 19\_\_\_\_  
In the office of the County Recorder \_\_\_\_\_ County, State of Nevada.



County Recorder

COPY

NO. 108804  
Filed And Recorded At Request Of  
LENARD SMITH  
APRIL 21, 1997  
At 05 Minutes Past 10 O'Clock  
A M In Book 127 Of Official Records  
Page 328 Lincoln County Nevada.

YURIKO SETZER  
County Recorder  
BY Ludie Boucher DEPUTY