

LOCATOR: HOMESTAKE MINING COMPANY OF CALIFORNIA
 650 CALIFORNIA STREET
 SAN FRANCISCO CA 94108

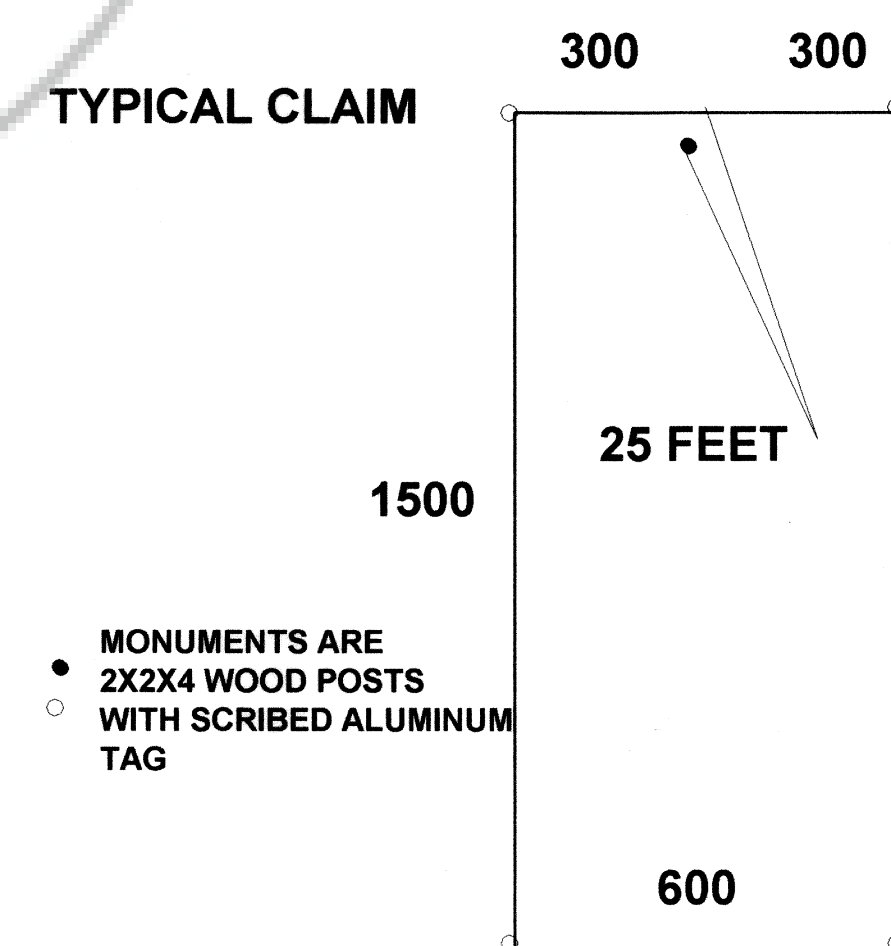
LOCATION:
 T1NR66E SECTIONS 1,2,3,4
 T2NR66E SECTIONS 33,34,35,36
 LINCOLN COUNTY NEVADA

LOCATION DATES
 P1200 TO 1217, 1254+1272 12/31/1996
 P1293,1295,1297,1299,1301
 P1272 TO 1291, 1302 TO 1307 1/1/1997
 P1218 TO 1253 1/2/1997
 P1292,1294,1296,1298,1300 1/3/1997

TIE POINT:
 THE NE CORNER OF P 1200 IS ⁷⁴⁰470 FEET NORTH
 AND 270 FEET WEST OF THE NE CORNER OF
 SECTION 1, T1NR66E

NOTES:
 ALL CLAIMS ARE LODE MINING CLAIMS
 ALL CLAIMS ARE 600 FEET BY 1500 FEET
 ALL CLAIMS ARE MONUMENTED WITH 2X2X4 WOOD POSTS
 ALL LOCATION MONUMENTS ARE 25 FEET FROM THE
 CENTER OF END LINE

TYPICAL CLAIM



MONUMENTS ARE
 • 2X2X4 WOOD POSTS
 ○ WITH SCRIBED ALUMINUM TAG

SCALE: 1" TO 500'