

R.67E.
T.3S.
T.4S.

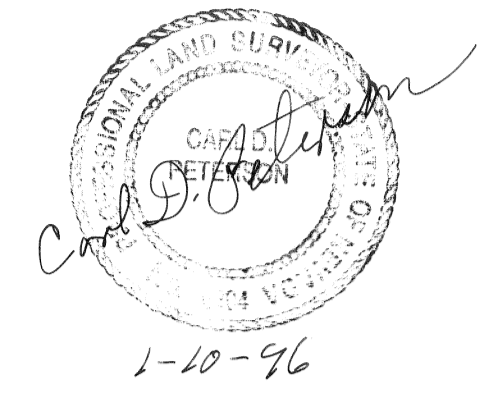
CURVE INFORMATION

CURVE	RADIUS	DELTA	LENGTH	CHORD
C-1	15.50'	74°27'47"	20.14'	18.76'
C-2	40.50'	42°29'55"	30.04'	29.36'
C-3	40.50'	211°14'05"	149.31'	78.01'
C-4	40.50'	120°48'54"	85.40'	70.43'
C-5	40.90'	29°35'33"	20.92'	20.69'

BUREAU of LAND MANAGEMENT

SURVEYORS CERTIFICATE

I, Carl D. Peterson, a Professional Land Surveyor in the State of Nevada do hereby certify that:
 1. This plat represents the results of a survey conducted under my direct supervision at the instance of L. David Love.
 2. The lands surveyed lie within section 5, T.4S., R.67E., M.D.M. The survey was completed.
 3. This plat complies with the applicable State Statutes sections 278.010 to 278.430 inclusive and 625.340 to 625.380, inclusive.
 4. The monuments depicted on the plat are of the character shown, occupy the positions indicated and are of sufficient number and durability.



OWNERS CERTIFICATE

We, the record title owners of the lands represented by this map do hereby consent to the preparation and recordation of this map.

L. David Love *Jean R. Love*
 L. David Love Jean R. Love
Donald L. Somers *Tina Somers*
 Donald L. Somers Tina Somers
Donald Lee Bradshaw *Rhonde Bradshaw*
 Donald Lee Bradshaw Rhonde Bradshaw

NOTARY PUBLIC

State of Nevada } ss
 County of Lincoln }

The foregoing persons did appear before me, a Notary Public, and were known by me to be the persons represented thereby, did freely and voluntarily execute the owners certificate herein.

Frank I. Apodaca
 Notary Public
 My commission expires 4/27/98

CITY PLANNING COMMISSION

At a regular meeting of the Caliente City Planning Commission held this 17th day of February, 1997, a review was made of this Amended Plat and did approve it for recordation.

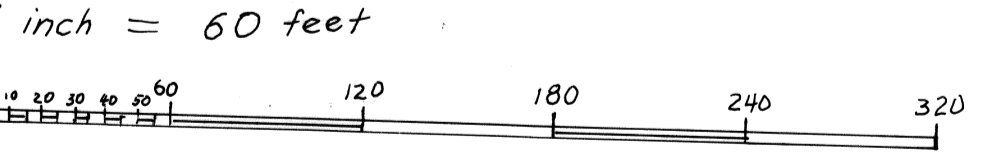
Carolyn R. Wileal
 Chairwoman

CITY COUNCIL

At a regular meeting of the Caliente City Council held this 6th day of February, 1997, a review was made of this Amended Plat and did approve it for recordation.

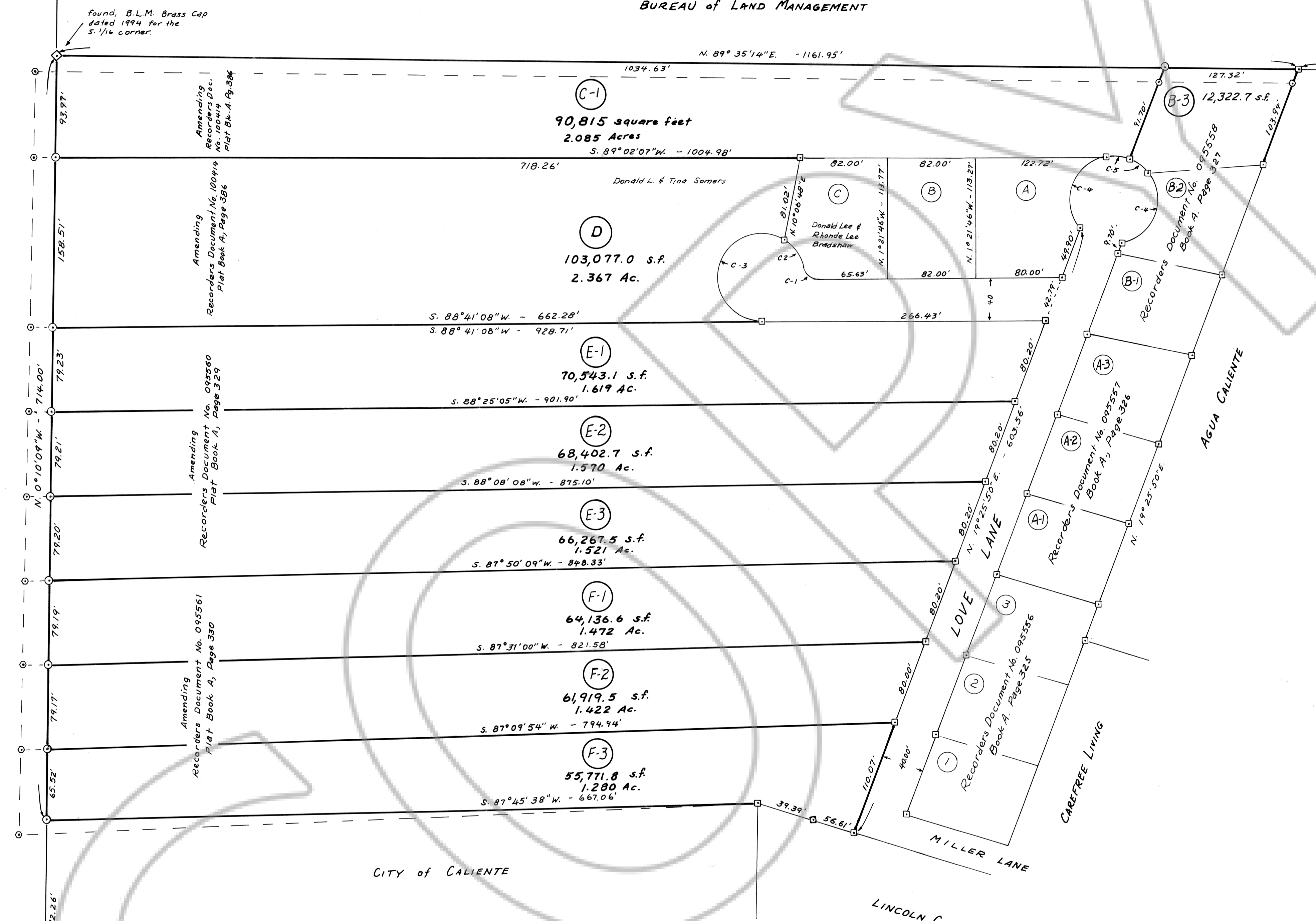
James Phillips
 Mayor

MAP SCALE



BASIS OF BEARINGS
N. 0° 10' 10" W. - 5232.01'

BUREAU of LAND MANAGEMENT



LEGEND

- Set Rebar with cap marked P.L.S. 6204
- Found rebar with cap marked P.L.S. 6204 - removed
- Found rebar with cap marked P.L.S. 6204
- Property boundary not affected by this amendment
- Section line
- Boundary line affected by this amendment
- ◇ Section corner as shown
- ◇ Sixteenth corner as shown
- (A-1) Parcel number

108338
 Recorders Certificate
 File No. 108338
 Recorded at the request of
 L. David Love
 Date 3-21-97 at 9:35 a.m.
 Plat Book B Page 26
 Lincoln County, Nev. Records

Yuriko Setzer
 County Recorder
John H. Houchens
 Deputy

AMENDED PLAT

IN THE SW 1/4 SECTION 5, T. 4S., R. 67E., IN THE CITY OF CALIENTE, LINCOLN COUNTY, NEVADA TO CONFORM TO THE FOUND AND TRUE SW CORNER OF SECTION 5, T. 4S., R. 67E., M.D.M., REMONUMENTED BY THE BUREAU OF LAND MANAGEMENT. ALSO, TO AMEND PARCEL NUMBERS OF BOOK A, PAGES 326, 327, 328, 329 AND 330 FOR REASONS OF CLARITY

LINCOLN COUNTY RECORDS:
 DOCUMENT NOS. 095558 THROUGH 095561 AND 100414
 IN PLAT BOOK A, PAGES 327 THROUGH 330, AND 386
 FOR L. DAVID LOVE AND JEAN R. LOVE