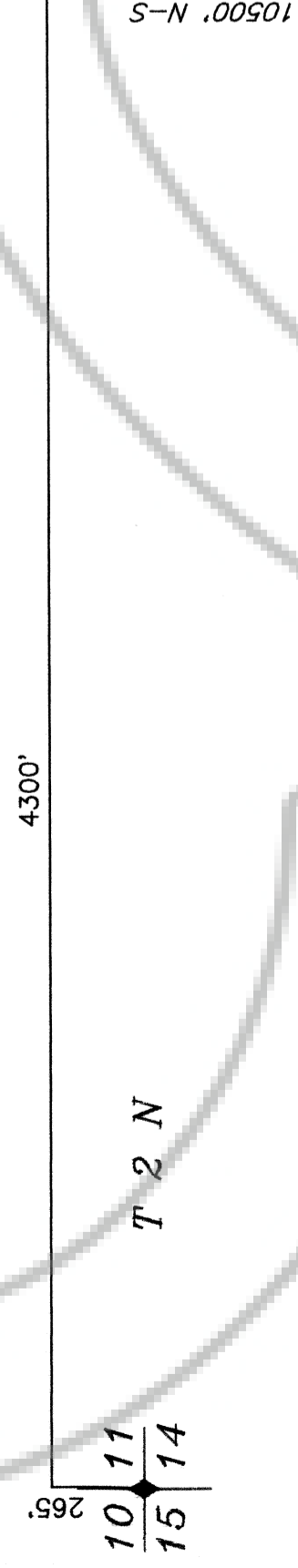


NOTE: THE NW CORNER WB 101 IS APPROXIMATELY 265 FEET NORTH AND 4300 FEET EAST OF THE NW CORNER SECTION 14 T 2 N, R 65 E.

R 65 E

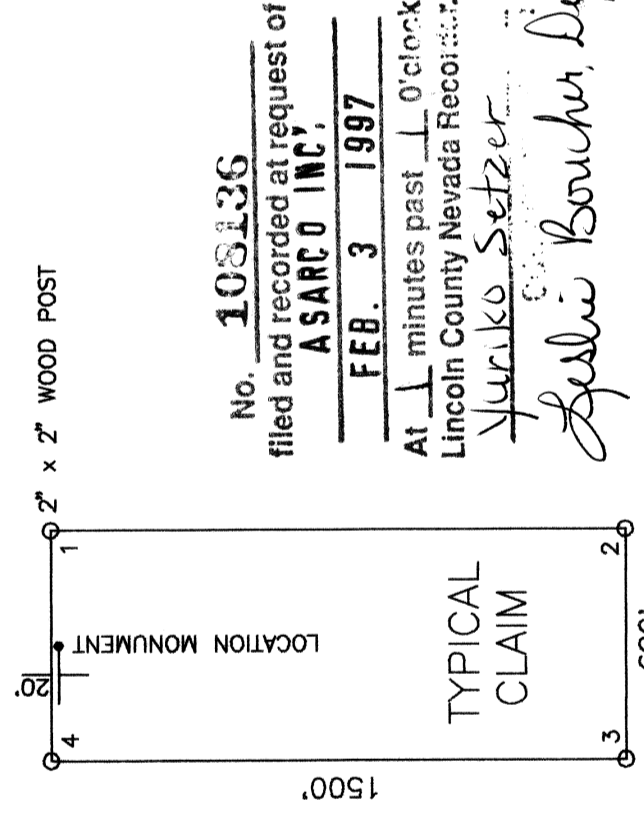


ASARCO INC.
510 EAST PLUMB LANE
RENO, NEVADA 89502

LODE CLAIMS WB 80-149
LINCOLN COUNTY, NEVADA
SECTIONS: 11,12,13,14,23,24 T 2 N, R 65 E M.D.B.M.

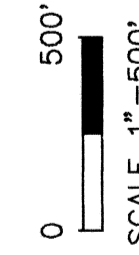
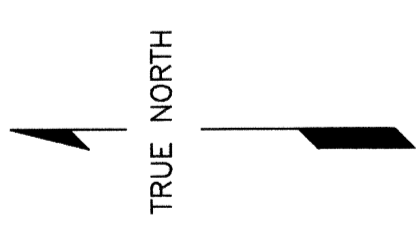
LOCATED: DECEMBER 13, 1996 WB 101,103,105,107,109,111,113,115,117,119-149
DECEMBER 14, 1996 WB 80-100,102,104,106,108,110,112,114,116,118

PREPARED BY: NORTH AMERICAN EXPLORATION, INC.
497 NORTH MAIN
KAYSVILLE, UTAH 84037



No. 105136
filed and recorded at request of
ASARCO INC.
FEB. 3 1997
At 11 minutes past 10 o'clock
Lincoln County Nevada Recorder:
Haruko Seizer

John Boncher Deputy



ALL CLAIMS ARE 1500' x 600'
UNLESS OTHERWISE NOTED.