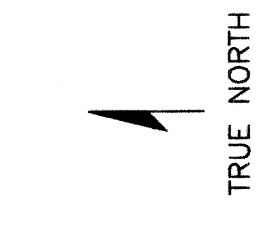


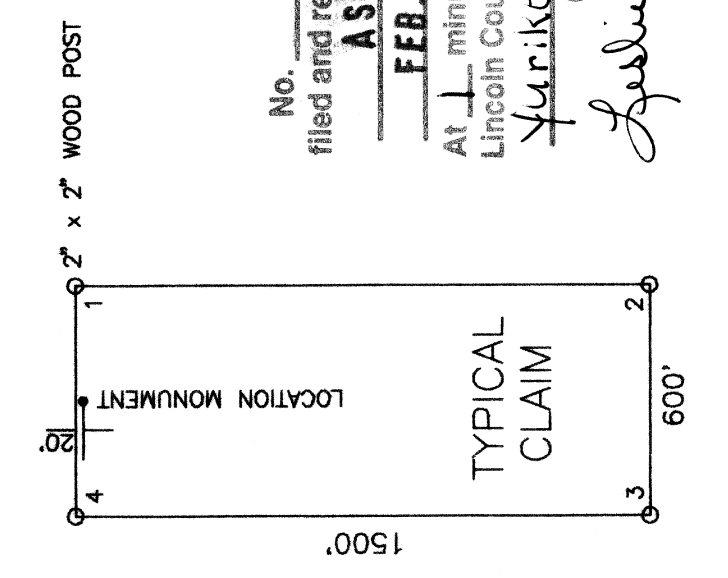
NOTE: THE SW CORNER WB 61 IS APPROXIMATELY 4765 FEET NORTH AND 4300 FEET EAST OF THE NW CORNER SECTION 14 T 2 N, R 65 E.

10 11
15 14

R 65 E



0 500'
SCALE 1"=500'



ASARCO INC.
510 EAST PLUMB LANE
RENO, NEVADA 89502

LODE CLAIMS WB 25-79, 150-153
LINCOLN COUNTY, NEVADA
SECTIONS: 25, 26, 35, 36 T 3 N, R 65 E M.D.B.M.
1, 2, 11, 12 T 2 N, R 65 E M.D.B.M.

LOCATED: DECEMBER 14, 1986 WB 61, 63, 65, 67, 69, 71, 73, 75, 77, 79
DECEMBER 16, 1996 WB 25-31, 32, 34, 36, 41, 43, 45, 47, 49, 51, 53, 55,
57, 59, 60, 62, 64, 66, 68, 70, 72, 74, 76, 78
DECEMBER 16, 1996 WB 33, 35, 37-40, 42, 44, 46, 48, 50, 52, 54, 56, 58
DECEMBER 18, 1996 WB 150-153

PREPARED BY: NORTH AMERICAN EXPLORATION, INC.
497 NORTH MAIN
KAYSVILLE, UTAH 84037