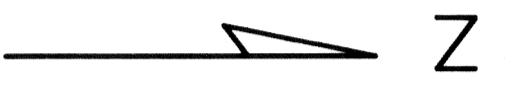
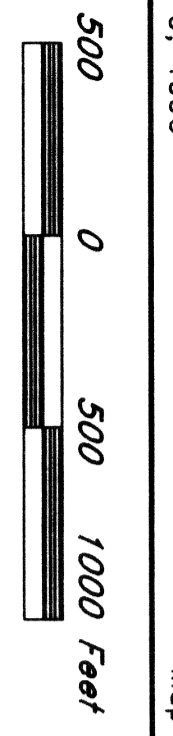


P 1-600, 602, 604, 606-1191
 LODGE MINING CLAIMS
 Section 36 T2N, R66E
 Sections 31, 36 T2N, R66E
 Sections 4, 7, 8, 12, 20, 29 T1N, R66E
 Sections 1-11, 13-21, 29-36 T1N, R66E
 Sections 7, 8, 17, 20, 29-32 T1N, R66E
 Sections 1-5, 6 T1S, R67E
 Sections 1-5, 6 T1S, R68E
 Sections 5, 6 T1S, R69E
 December 9, 1996
 Map 9 of 12



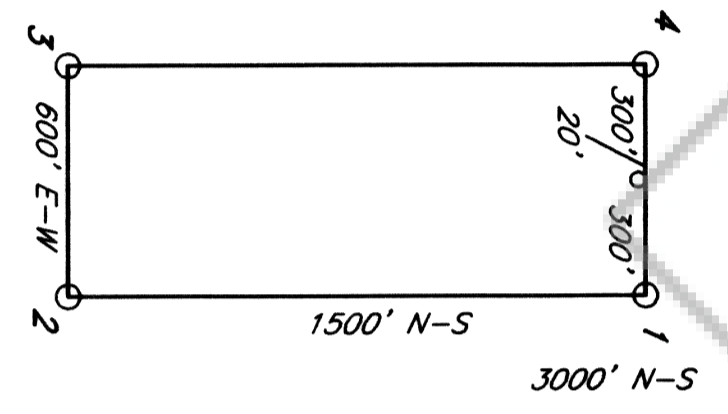
R 67 E
 R 68 E

107931
 This map was recorded at request of
 HOMESTAKE MINING CO.
 JAN 10 1997
 At 11 minutes past 1 o'clock
 Lincoln County Nevada Recorder
 Yuriko Sedzer
 COUNTY RECORDER
 Estelle Boucher, Deputy
 1500' N-S

6000' E-W																		
T 1 N																		
1500' N-S																		
1200' E-W																		
516	515	513	511	509	507	505	503	501	499	497	495	493	491	489	487	485	483	
514	512	510	508	506	504	502	500	498	496	494	492	490	488	486	484			
6000' E-W																		
1500' N-S																		
1200' E-W																		
649	647	645	643	641	639	637	635	633	631	629	627	625	623	621	619	617	615	
650	648	646	644	642	640	638	636	634	632	630	628	626	624	622	620	618	616	
6000' E-W																		
1500' N-S																		
1200' E-W																		
805	804	803	802	801	700	699	697	695	693	691	689	687	685	683	681	679	677	
804	803	802	801	699	697	695	693	691	689	687	685	683	681	679	677	675	673	
6000' E-W																		
1500' N-S																		
1800' E-W																		
956	954	952	950	948	946	944	942	940	938	936	934	932	930	928	926	924		
955	953	951	949	947	945	943	941	939	937	935	933	931	929	927	925	923		
6000' E-W																		
1500' N-S																		
3000' E-W																		
820	819	818	817	815	813	811	810	808	806	800	799	797	795	796				
820	819	818	817	815	813	811	810	808	806	800	799	797	795	796				
6000' E-W																		
1500' N-S																		
22500' N-S																		
958	957	1031	1029	1027	1025	1023	1021	1019	1017	1015	1013	1011	1009	1007	1005	1003	1001	999
958	957	1031	1029	1027	1025	1023	1021	1019	1017	1015	1013	1011	1009	1007	1005	1003	1001	999
6000' E-W																		
1500' N-S																		
3000' E-W																		
26	25	35	36	35	36	35	36	35	36	35	36	35	36	35	36	35	36	35

LOCATION:
 HOMESTAKE MINING COMPANY OF CALIFORNIA
 650 California Street
 San Francisco, CA 94108

TYPICAL CLAIM:



NOTES:
 All claims are 1500' x 600'.
 All monuments are 2"x2"x4' wood posts, with location
 monuments 20' in from end and center excepted where noted

LOCATION DATE:

- 10-15-96 P 1-40
- 10-16-96 P 255-290, 355-406, 517-524
- 10-17-96 P 291-326, 407-444
- 10-18-96 P 327-354, 445-470, 573, 577-581
- 10-19-96 P 539-576, 671-688, 723-758
- 10-20-96 P 759-794, 883-922
- 10-21-96 P 625-638, 651-669, 701-722, 821-882
- 10-22-96 P 971-993, 1051-1090, 1143-1183
- 10-23-96 P 582-600, 602, 604, 471-477
- 10-24-96 P 131-166, 221-234, 953-970, 1017-1050, 1109-1142
- 10-25-96 P 167-220, 818-820
- 10-26-96 P 41-130, 923-956, 999-1016, 1091-1108
- 10-27-96 P 478-516, 606-650, 670, 689-700, 795-817
- 11-5-96 P 1185-1191

THE POINT:

The NE corner of P 2 is 250' North and 200' East
 of the NE corner Section 21 T1N, R67E
 The NW corner of P 1188 is 2450' East of
 the NW corner Section 15 T1N, R67E
 The NW corner of P 1191 is 100' North and 1200' East
 of the NE corner Section 21 T1N, R67E