

LOCATOR:
 HOMESTAKE MINING COMPANY OF CALIFORNIA
 650 California Street
 San Francisco, CA 94108

LOCATION:
 Section 36 T2N, R66E
 Sections 31-36 T2N, R67E
 Sections 1-4, 7-18, 20-29 T1N, R66E
 Sections 1-11, 13-27, 29-36 T1N, R67E
 Sections 7, 8, 17-20, 29-32 T1N, R68E
 Sections 1-5 T1S, R67E
 Sections 5, 6 T1S, R68E

LOCATION DATE:

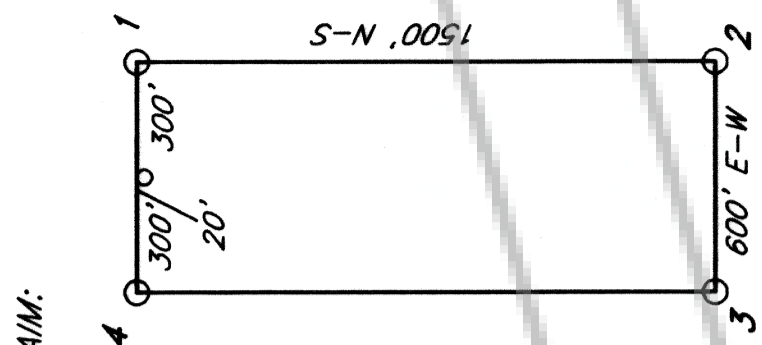
- P 1-40
- P 255-290, 355-406, 517-524
- P 291-326, 407-444
- P 327-354, 445-470, 573, 577-581
- P 539-576, 671-688, 723-758
- P 759-794, 883-922
- P 971-998, 1051-1090, 1143-1183
- P 525-538, 651-669, 701-722, 821-882
- P 582-600, 602, 604, 471-477
- P 131-166, 221-254, 957-970, 1017-1050, 1109-1142
- P 167-220, 818-820
- P 41-130, 923-956, 999-1016, 1091-1108
- P 478-516, 606-650, 670, 689-700, 795-817
- P 1185-1191

TIE POINT:

The NE corner of P 2 is 250' North and 200' East of the NE corner Section 21 T1N, R67E
 The NW corner of P 1188 is 2450' East of the NW corner Section 15 T1N, R67E
 The NW corner of P 1191 is 100' North and 1200' East of the NE corner Section 21 T1N, R67E

NOTES:

All claims are 1500' x 600'
 All monuments are 2"x2"x4" wood posts, with location monuments 20' in from end center excepted where noted



No. **107930**
 filed and recorded at request of:
HOMESTAKE MINING CO.
 JAN. 10 1997
 At 1 minutes past 1 o'clock
 Lincoln County Nevada Recorder.
 Yuriko Setzer
 COUNTY RECORDER
 Leslie Conner, Deputy

500 0 500 1000 Feet
 P 1-600, 602, 604, 606-1191
 LODE MINING CLAIMS
 Section 36 T2N, R66E
 Sections 31-36 T2N, R67E
 Sections 1-4, 7-18, 20-29 T1N, R66E
 Sections 1-11, 13-27, 29-36 T1N, R67E
 Sections 7, 8, 17-20, 29-32 T1N, R68E
 Sections 1-5 T1S, R67E
 Sections 5, 6 T1S, R68E
 December 9, 1996
 Map 8 of 12