

431	429	427	425	423	421	419	417	415	413	411	409	407	405	403	401	399	397
432	430	428	426	424	422	420	418	416	414	412	410	408	406	404	402	400	398
563	561	559	557	555	553	551	549	547	545	543	541	539	537	535	533	529	527
564	562	560	558	556	554	552	550	548	546	544	542	540	538	536	532	530	528
683	682	681	680	679	678	677	676	675	674	673	672	671	668	666	662	660	658
747	745	743	741	739	737	735	733	731	729	727	725	723	721	719	717	713	711
748	746	744	742	740	738	736	734	732	730	728	726	724	722	720	718	714	712
875	873	871	869	867	865	863	861	859	857	855	853	851	849	847	845	841	839
876	874	872	870	868	866	864	862	860	858	856	854	852	850	848	844	842	840

LOCATOR:
HOMESTAKE MINING COMPANY OF CALIFORNIA
650 California Street
San Francisco, CA 94108

LOCATION DATE:
10-15-96
10-16-96
10-17-96
10-18-96
10-19-96
10-20-96
10-21-96
10-22-96
10-23-96
10-24-96
10-25-96
10-26-96
10-27-96
11-5-96

LOCATION DATE:

P 1-40
P 255-290, 355-406, 517-524
P 291-326, 407-444
P 327-354, 445-470, 573, 577-581
P 539-576, 671-688, 723-758
P 759-794, 883-922
P 971-999, 1051-1090, 1143-1183
P 582-600, 602, 604, 471-477
P 131-166, 221-254, 957-970, 1017-1050, 1109-1142
P 167-220, 818-820
P 41-130, 923-956, 999-1016, 1091-1108
P 478-516, 606-650, 670, 689-700, 795-817
P 1185-1191

T 1 N

600' E-W

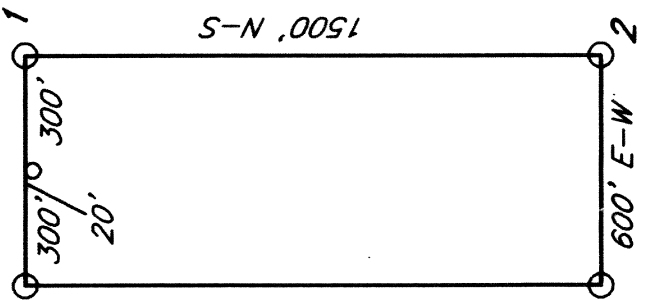


P 1-600, 602, 604, 606-1191
LODE MINING CLAIMS

Section 36 T2N, R66E
Sections 31-36 T2N, R66E
Sections 1-4, 7-18, 20-29 T1N, R66E
Sections 1-11, 13-27, 29-36 T1N, R67E
Sections 7, 8, 17-20, 29-32 T1N, R68E
Sections 1-5 T1S, R67E
Sections 5, 6 T1S, R68E

December 9, 1996 Map 6 of 12

TYPICAL CLAIM:



NOTES:
All claims are 1500' x 600'.
All monuments are 2'x2'x4' wood posts, with location monuments 20' in from end center excepted where noted.

No. 107928
HOMESTAKE MINING CO.
JAN 10 1997
At 1 minutes past 1 o'clock
Lincoln County Nevada Record
Yurita Seizer
Deputy County Clerk
of the NE corner Section 21 T1N, R67E

TIE POINT:

The NE corner of P 2 is 250' North and 200' East of the NE corner Section 21 T1N, R67E
The NW corner of P 1188 is 2450' East of the NW corner Section 15 T1N, R67E
The NW corner of P 1191 is 100' North and 1200' East of the NE corner Section 21 T1N, R67E

R 66 E
R 67 E

1500' N-S

3000' N-S

600' E-W