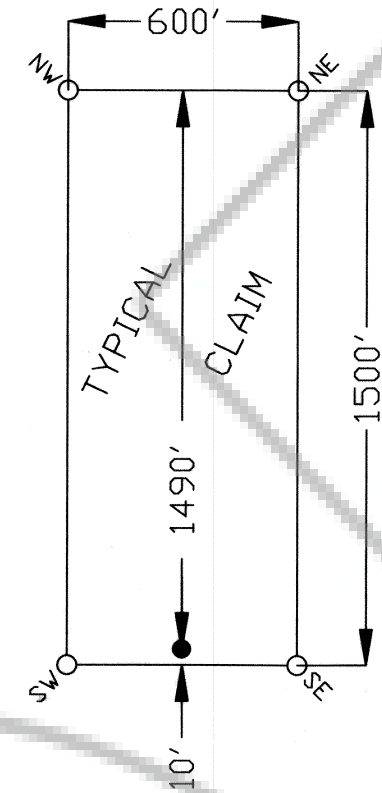


TIE POINT DATA:  
 NE CORNER OF CA #15 IS LOCATED  
 APPROX. 11,900' DUE SOUTH AND  
 700' DUE EAST OF THE PEAK OF  
 ELLA MOUNTAIN, R67E, T6S, M.D.P.M.

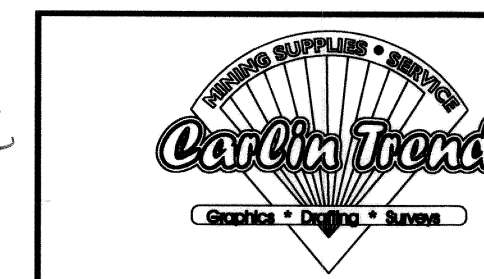


NOTES  
 Location monuments set at  
 10' from endline.

LOCATION DATES:  
 Sept. 13, 1996 -- CA 1 - 48

0 250 500 1000  
 SCALE: 1 in. = 500 ft.

No. **106554**  
 filed and recorded at request of  
*Royal Standard Minerals*  
*December 2, 1996*  
 At 55 minutes past 11 O'clock  
 Lincoln County Nevada Recorder.  
*Yuriko Setzer*  
 COUNTY BY  
*Julie Boucher, Deputy*



**ROYAL STANDARD MINERALS**  
 530 East Main Street, Suite 900  
 Richmond, Virginia 23219  
 CA Claims  
 R67E, T6S, Lincoln Co., Nevada