

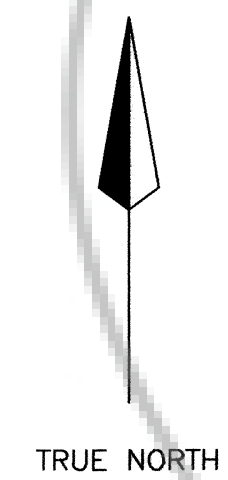
NOTE: THE NE CORNER CM 1 IS APPROXIMATELY 1892 FEET SOUTH AND 5813 FEET WEST OF THE WEST 1/4 SECTION 10 T 5 S, R 66 E.

WORLD WIDE MINERALS (U.S.A.) INC.
SUBSIDIARY OF WORLD WIDE MINERALS LTD.
SUITE 5808, SCOTIA PLAZA
40 KING ST. W.
TORONTO, ONTARIO
CANADA M5H 3Y2

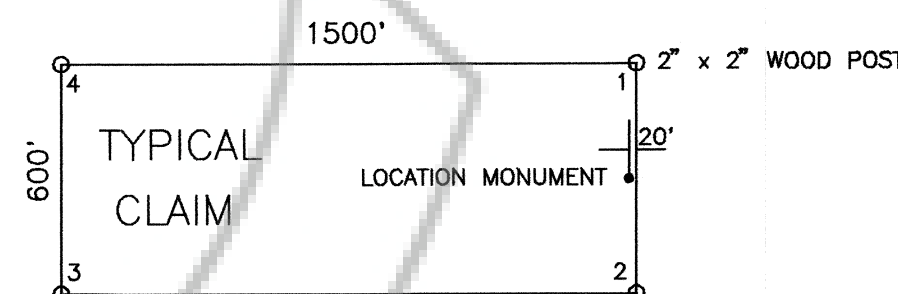
LODE CLAIMS: (CM 1,15-31)(EASTER 1-10)(MADELINE 1)
(RUG 1-5,7-11)(TAM 1-5)(TM 1-15)
LINCOLN COUNTY, NEVADA
PROJECTED SECTIONS: 13,24 T 5 S, R 65 E M.D.B.M.
8,17,18,19,20 T 5 S, R 66 E M.D.B.M.

LOCATED: SEPTEMBER 25, 1996 (CM 1,15,16)(EASTER 5,6,9,10)(MADELINE 1)
SEPTEMBER 25, 1996 (RUG 5,7-9)(TAM 1-5)(TM 1-3)
SEPTEMBER 27, 1996 (EASTER 1-4,7,8)(CM 17-31)
SEPTEMBER 27, 1996 (RUG 1-4,10,11)(TM 4-15)

PREPARED BY: NORTH AMERICAN EXPLORATION, INC.
497 NORTH MAIN
KAYSVILLE, UTAH 84037



SCALE 1"=500'
0 500'



ALL CLAIMS ARE 1500' x 600'
UNLESS OTHERWISE NOTED.

No. 106246
filed and recorded at request of
North American Exploration, Inc.
October 29, 1996
At 21 minutes past 1 o'clock
Lincoln County Nevada Recorder.
Yuriko Setzer
COUNTY RECORDER
Leslie Boucher, Deputy