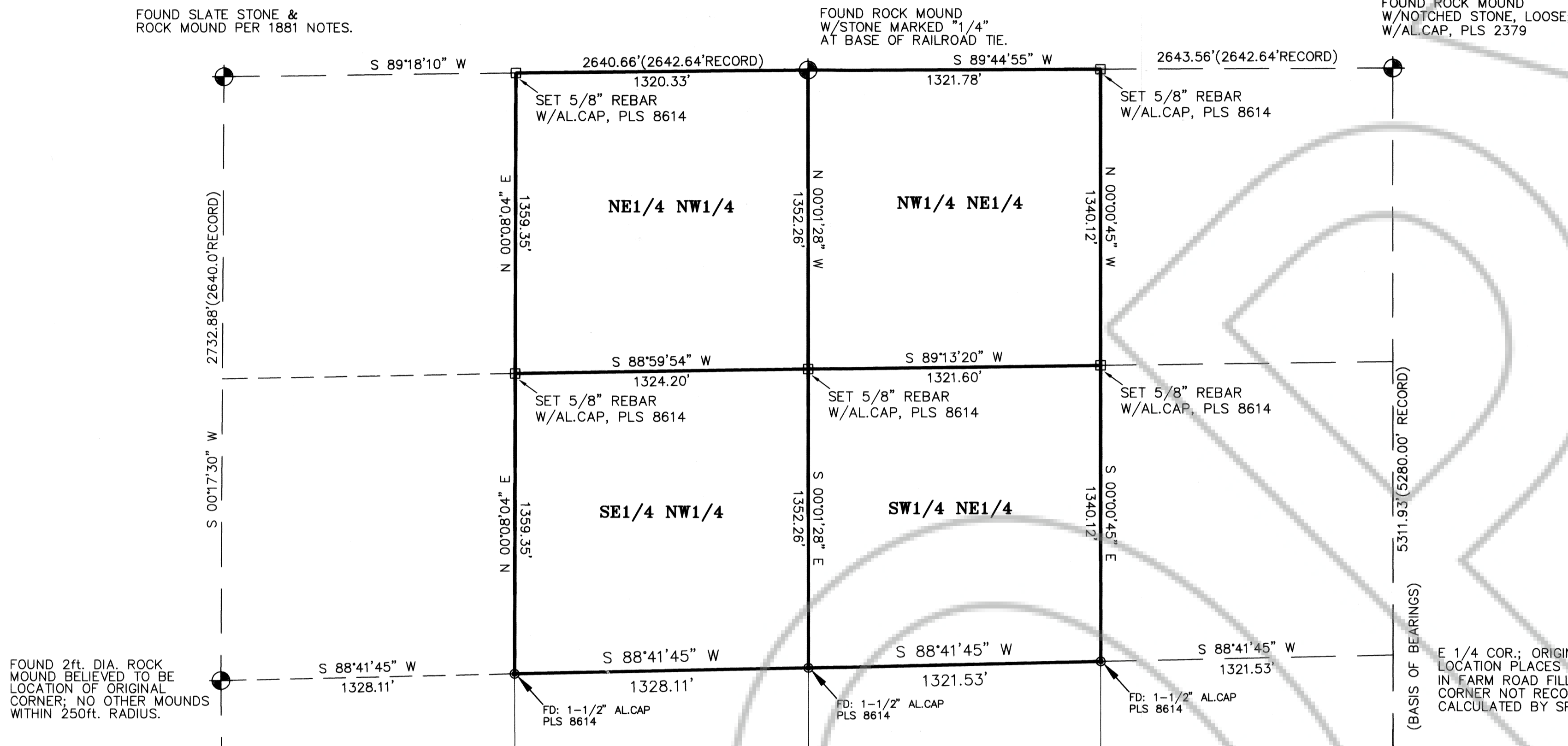


RECORD OF SURVEY BEDROC, INC.

LOCATED IN THE NORTH HALF (N1/2) OF SECTION 24, T.11 S., R.62 E., M.D.M.
LINCOLN COUNTY, NEVADA

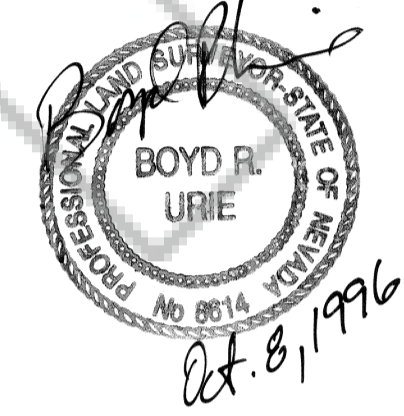


SURVEYOR'S CERTIFICATE

I, BOYD R URIE, A PROFESSIONAL LAND SURVEYOR REGISTERED IN THE STATE OF NEVADA, DO HEREBY CERTIFY THAT:

1. THIS IS A TRUE AND ACCURATE REPRESENTATION OF THE LANDS SURVEYED UNDER MY SUPERVISION AT THE INSTANCE OF PAT RICHARDS.
2. THE LANDS SURVEYED LIE WITHIN THE N1/2 SECTION 24, TOWNSHIP 11 SOUTH, RANGE 62 EAST, M.D.M. LINCOLN COUNTY, NEVADA. AND THE SURVEY WAS COMPLETED ON AUGUST 23, 1996.
3. THIS MAP COMPLIES WITH THE APPLICABLE STATE STATUTES PER N.R.S. AND IS NOT A SUBDIVISION.
4. THE MONUMENTS DEPICTED ON THIS MAP ARE OF THE CHARACTER SHOWN AND OCCUPY THE POSITIONS INDICATED AND ARE OF SUFFICIENT NUMBER AND DURABILITY TO ALLOW THIS SURVEY TO BE RETRACED.

BOYD R URIE
PROFESSIONAL LAND SURVEYOR
NEVADA CERTIFICATE NO. 8614



BASIS OF BEARINGS

NORTH 00°00'00"EAST, BEING THE EAST LINE OF SECTION 24, TOWNSHIP 11 SOUTH, RANGE 62 EAST, M.D.M., PER THE G.L.O. PLAT OF THE ORIGINAL SURVEY OF 1881.

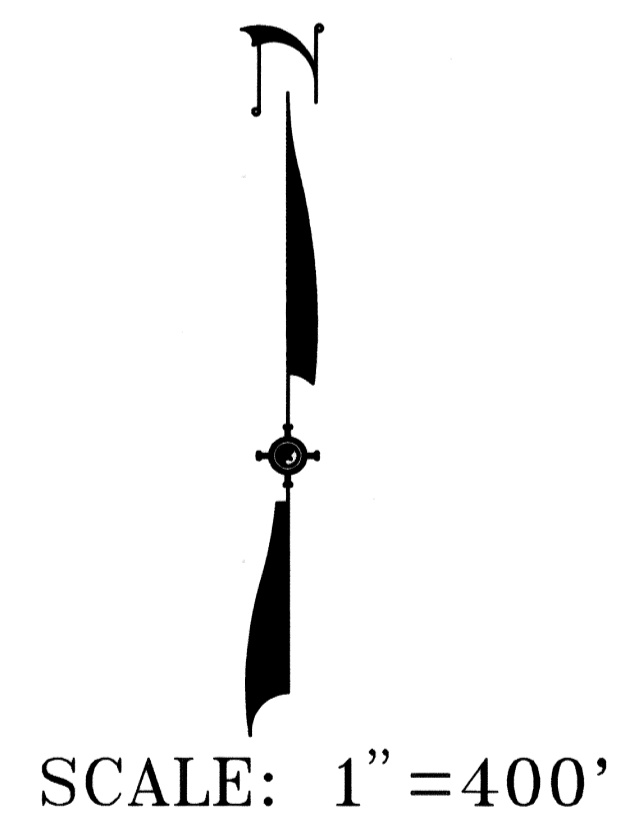
REFERENCES:

1. 1881 G.L.O. DEPENDENT SURVEY OF TOWNSHIP 11 SOUTH, RANGE 62 EAST, M.D.M.
2. RECORD OF SURVEY IN PLAT BOOK "A", PAGE 453, INST.NO.104114.

LEGEND

- PARCEL LINES MONUMENTED PER THIS SURVEY
- PARCEL LINES PREVIOUSLY MONUMENTED
- SECTION LINES
- CORNERS FOUND & SET
- BLM CORNERS FOUND

E 1/4 COR.; ORIGINAL LOCATION PLACES CORNER IN FARM ROAD FILL; CORNER NOT RECOVERED. CALCULATED BY SPLIT PER 1881 NOTES.



RECORDERS NOTE:
ANY SUBSEQUENT CHANGES TO THIS MAP SHOULD BE EXAMINED AND MAY BE DETERMINED BY REFERENCE TO THE COUNTY RECORDERS CUMULATIVE MAP INDEX (NRS 278.5695)

RECORD OF SURVEY BEDROC, INC.		No. 106084	
LOCATED IN N1/2 OF SEC.24, T. 11 S., R. 62 E., M.D.M. LINCOLN COUNTY, NEVADA.		Filed at the request of SUMMIT ENGINEERING CORP.	
		Date 10-16-96 At 1:01 P.m.	
		File _____ Page 499	
		of Surveys Official Records Book Plat A	
		Lincoln County, Nevada Records YURIKO SETZER, Recorder	
		Fee: 17.00 Deputy Boucher	
SUMMIT ENGINEERING CORPORATION CONSULTING ENGINEERS AND SURVEYORS 3684 S. HIGHLAND LAS VEGAS, NEVADA 89103 (702) 262-3236 FAX:232-3247		SHEET 1	OF 1