

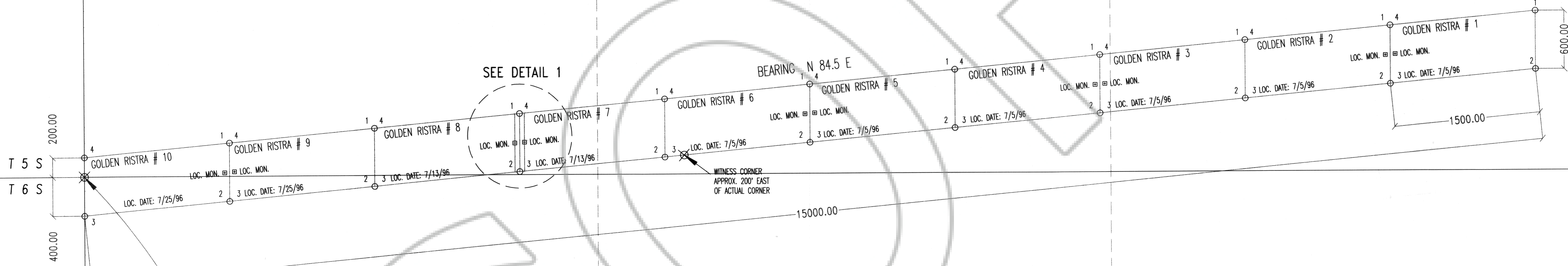
R 64 E
R 65 E

31

32

33

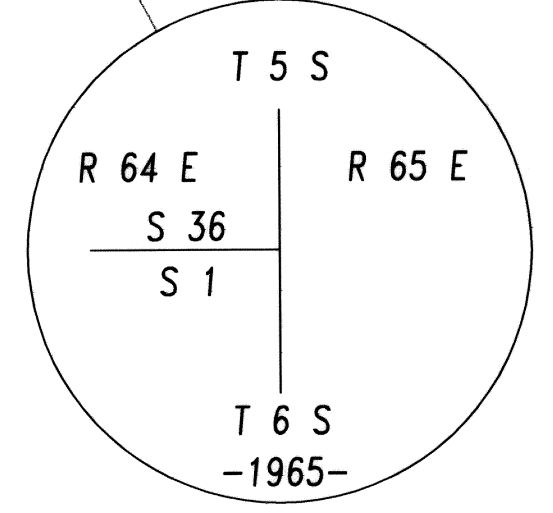
BEARING DUE NORTH



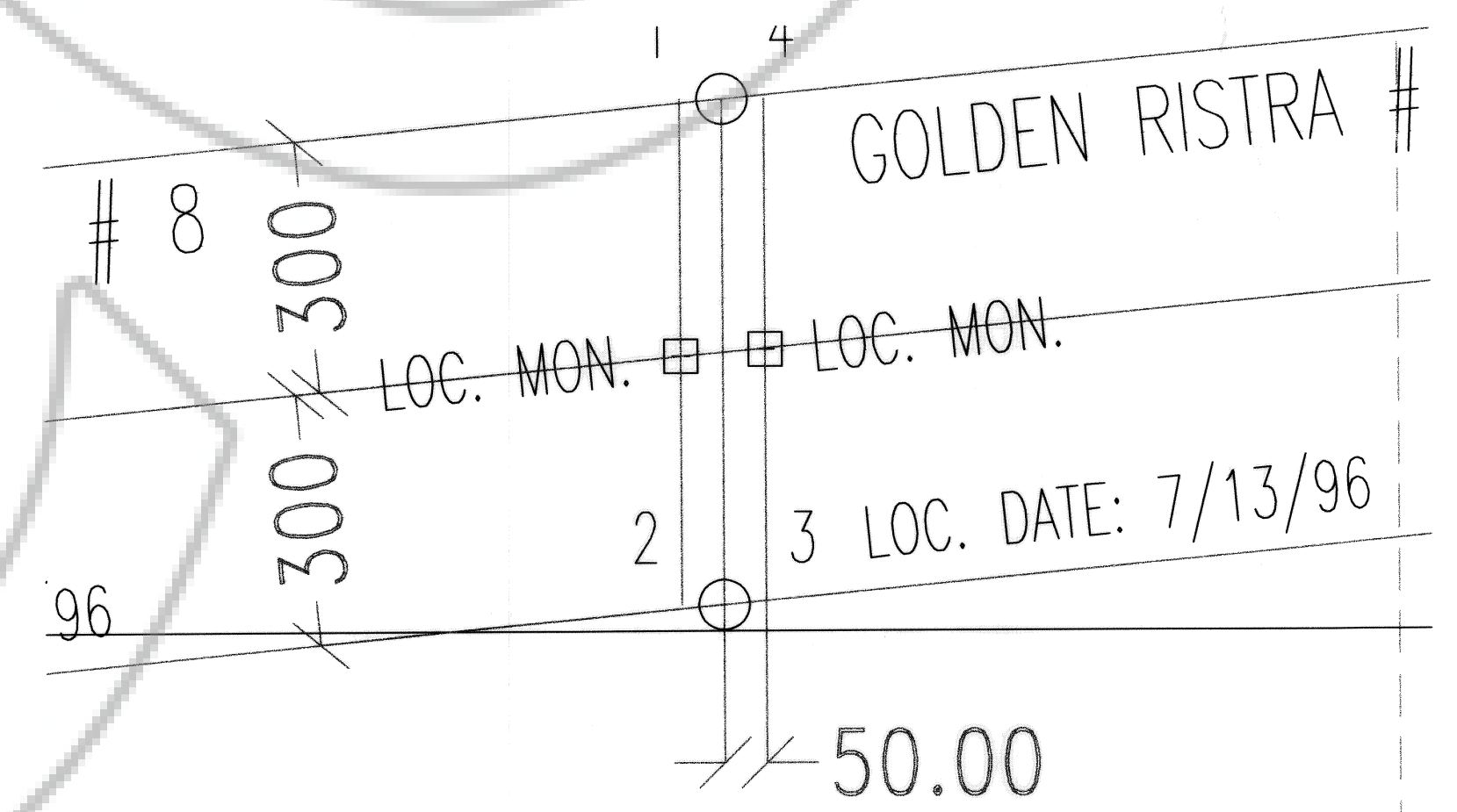
SEE DETAIL 1

BEARING N 84.5 E

WITNESS CORNER
APPROX. 200' EAST
OF ACTUAL CORNER



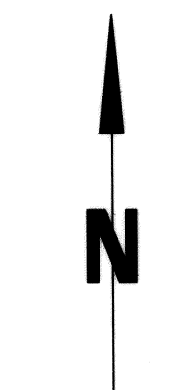
USGS CADASTRAL SURVEY MONUMENT



DETAIL 1
SCALE: 1"=200'

105615
 Teresa Conner
 August 9, 1996
 12
 120
 139
 Yuriko Setzer
 Felie Boucher, Deputy

NOTE:
 ALL MONUMENTS ARE
 1-1/2" X 1-1/2" WOODEN
 POSTS 4' LONG.



SCALE: 1"=500'

GOLDEN RISTRA LODE CLAIM GROUP	
DELAMAR MINING DISTRICT	
LINCOLN COUNTY, NV USA	
LOCATED BY TERESA CONNER / DAVE PIERCE	
P.O. BOX 5609	
ELKO, NV 89802	