

R 54 E R 55 E

36

1

31

6

3

2

3

2

3

2

3

2

3

2

3

2

3

2

3

2

3

2

3

2

3

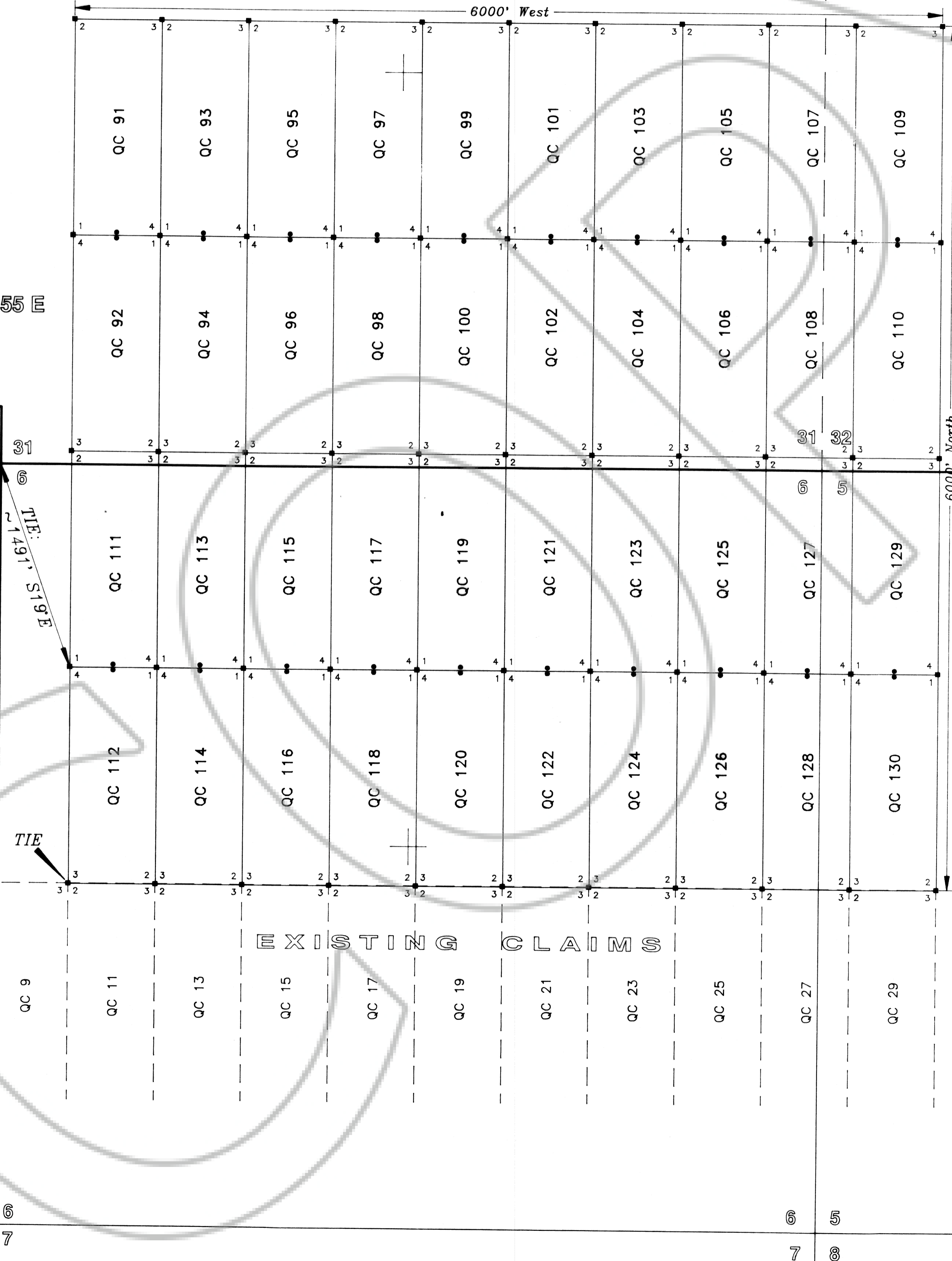
2

6000' West

600' North

T 2 N

T 1 N



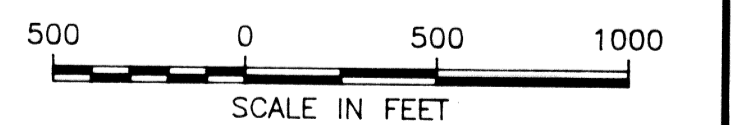
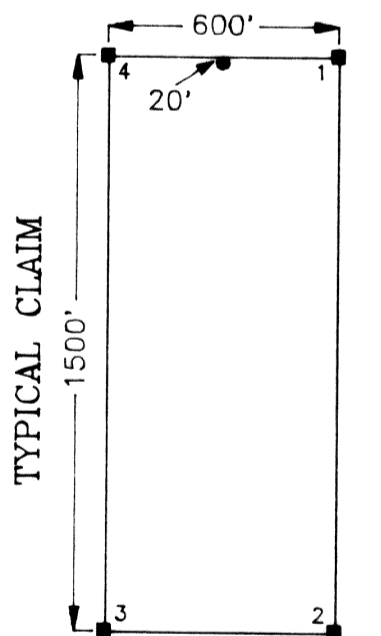
EXPLANATION

- Monuments of Location are set with 2"x2"x4' wood posts.
  - Claim corners are set with 2"x2"x4' wood posts.
- All claims measure 600' x 1500'.  
All Monuments of Location are set 20' into claim.

LOCATION DATES:  
 QC 111-130 - March 29, 1996  
 QC 91-110 - March 30, 1996

LOCATOR:  
 Rayrock Mines, Inc., dba Cordex Exploration Co.  
 573 E. 2nd Street  
 Reno, Nevada 89502

TIES:  
 The SW Corner (1) of QC 111 bears approximately 1481' S19°E from the NW Corner of Section 6, T1N-R55E.  
 The SW Corner (3) of QC 112 is common with the NW Corner (2) of QC 11.



105152  
 FILED AND RECORDED AT REQUEST OF  
 Cordex Exploration Co.  
 April 25, 1996  
 01 MINUTES PAST 1 O'CLOCK  
 P.M. IN BOOK 118 OF OFFICIAL  
 RECORDS PAGE 358 LINCOLN  
 COUNTY, NEVADA  
 Yuniko Setzer  
 Jessie Boucher, Deputy

CORDEX EXPLORATION CO.  
 QC 91 through QC 130  
 Lode Mining Claims

Surveyed Secs. 5 & 6, T1N-R55E and  
 Partially Surveyed Secs. 31 & 32, T2N-R55E, M.D.B.&M.  
 Lincoln County, Nevada

Compiled By: J.A.T.  
 Drawn By: J.A.T.  
 Drawing: QC91-130.DWG  
 View: PLOT  
 Date: April 17, 1996  
 Revised: