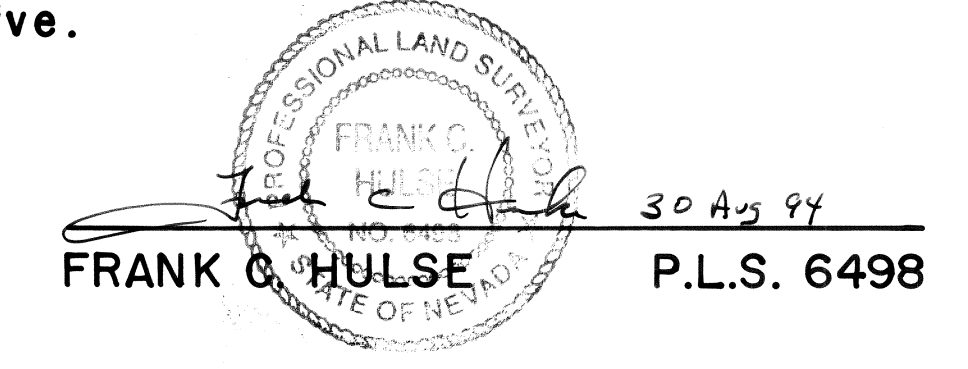


SURVEYOR'S STATEMENT

FRANK C. HULSE states that he is a Professional Land Surveyor within the State of Nevada and that this Parcel Map, consisting of one sheet, accurately and completely delineates the survey made by him and completed on the 30th of June, 1994. This map has been prepared at the instance of CHARLOTTE W. MOSLEY, owner. All monuments are of the character and occupy the positions shown hereon and are sufficient to enable the survey to be retraced. This survey conforms to the definitions and provisions of N.R.S. 278.471 thru 278.4725, inclusive.



OWNER'S CERTIFICATE

I, CHARLOTTE W. MOSLEY, do hereby certify that I am the owner of the land shown hereon and consent to the preparation and recordation of this Parcel Map showing the land plotted into parcels and that it conforms to the provisions of N.R.S. 278.471 to 278.4725, inclusive. I also offer for dedication the roads and multiple use easements as shown hereon for public usage by Lincoln County, it's heirs and assigns and to the various utility companies as necessary for their usage.

*Charlotte W. Mosley*  
CHARLOTTE W. MOSLEY

ACKNOWLEDGEMENT

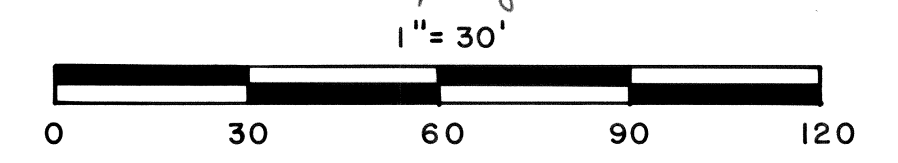
STATE OF Arizona  
COUNTY OF Maricopa ss

On this 13<sup>th</sup> day of September, 1994, CHARLOTTE W. MOSLEY appeared before me and acknowledged to me that she did approve and did execute the above instrument.

*Frank C. Hulse*  
Notary Public

My commission expires: 10/30/97

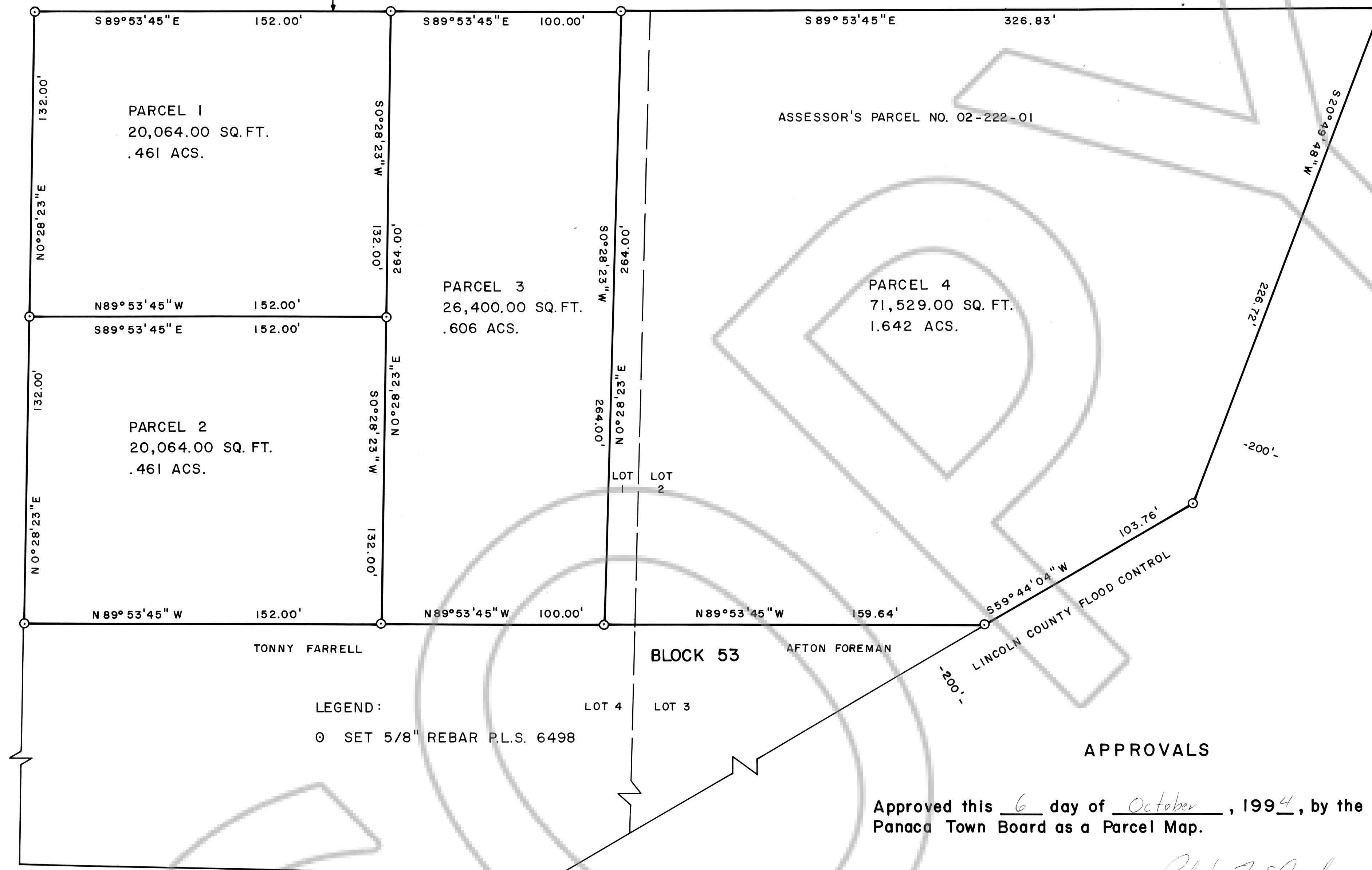
105003  
10305  
I HEREBY CERTIFY THAT THE ABOVE SURVEY WAS MADE AND RECORDED AT THE REQUEST OF  
Frank Hulse  
March 27, 1994  
AT 55 MINUTES TO 9 O'CLOCK  
A.M. IN BOOK Plat A OF OFFICIAL  
RECORDS, PAGE 477 LINCOLN COUNTY, NEVADA  
Yuriko Setzer COUNTY CLERK  
Julie Boucher, Deputy



PARCEL MAP OF NI/2 OF BLOCK 53, PANACA TOWNSITE WITHIN THE NE1/4 OF THE SW1/4 OF SEC. 9, T2S, R68E, M.D.M. PREPARED AT THE INSTANCE OF CHARLOTTE W. MOSLEY.

NI/2 BLOCK 53 PANACA TOWNSITE WITHIN NE1/4 SW1/4 SECTION 9, T2S, R68E, M.D.M.

PHILLIPS STREET (NOT MAINTAINED)



LEGEND:  
O SET 5/8" REBAR P.L.S. 6498

APPROVALS

Approved this 6 day of October, 1994, by the Panaca Town Board as a Parcel Map.

*Robert McCusky*  
Chairman

This is to certify that the Planning Commission in and for Lincoln County, Nevada, on this 10 day of Oct, 1994, did approve for the purposes of land division and accept in behalf of the public this map and any parcels of land offered for dedication for public use in conformity with the terms of the offer of dedication per Section 278 of the Nevada Revised Statutes.

*Wall E. Wadsworth*  
Chairman

Approved this 25<sup>th</sup> day of Oct, 1994, by the Lincoln County Commission, as a Parcel Map.

*James Colwell*  
Chairman

Attest: *Connie Hogan*  
Clerk

BLOCK 48

VICINITY MAP

