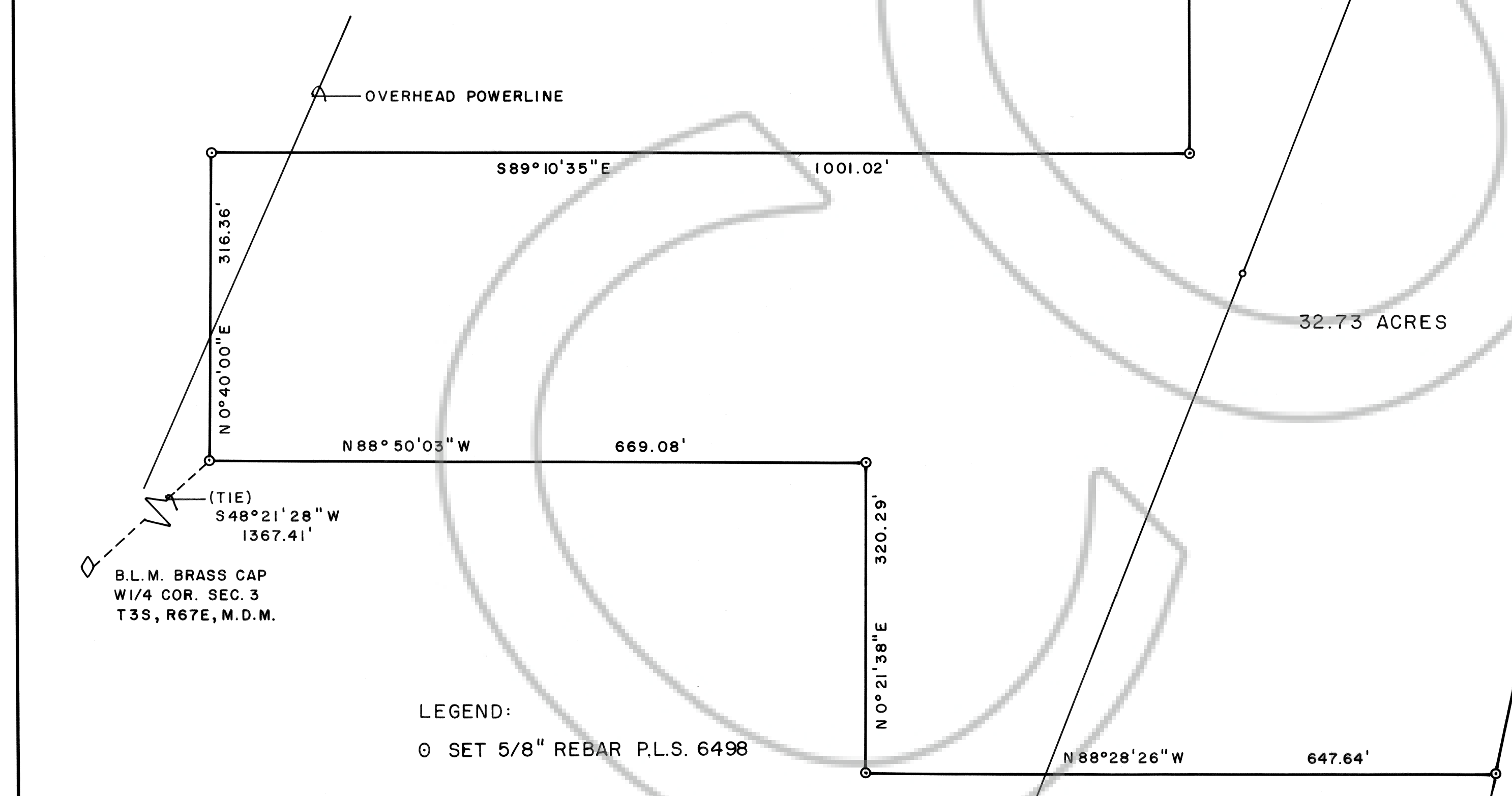
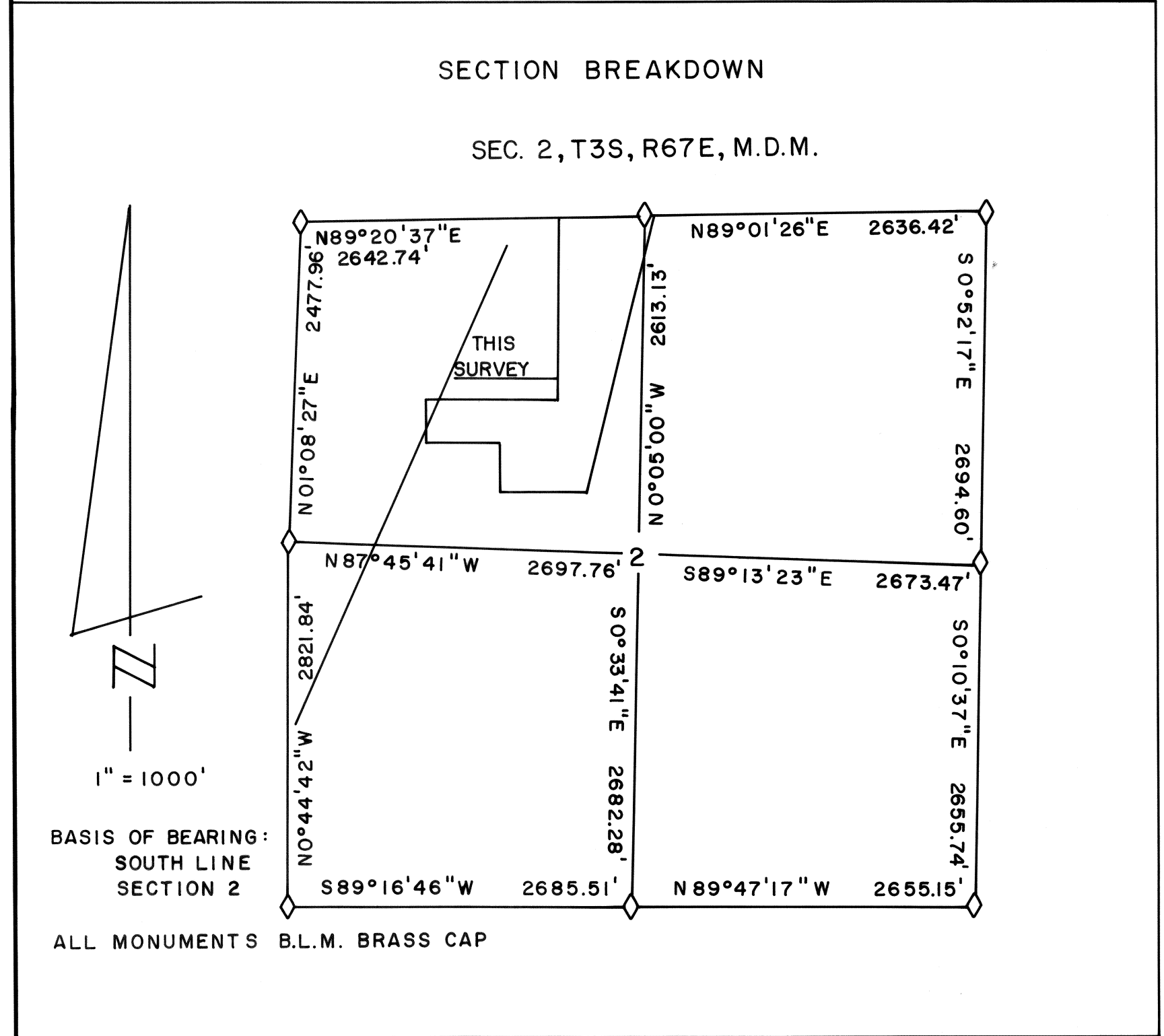
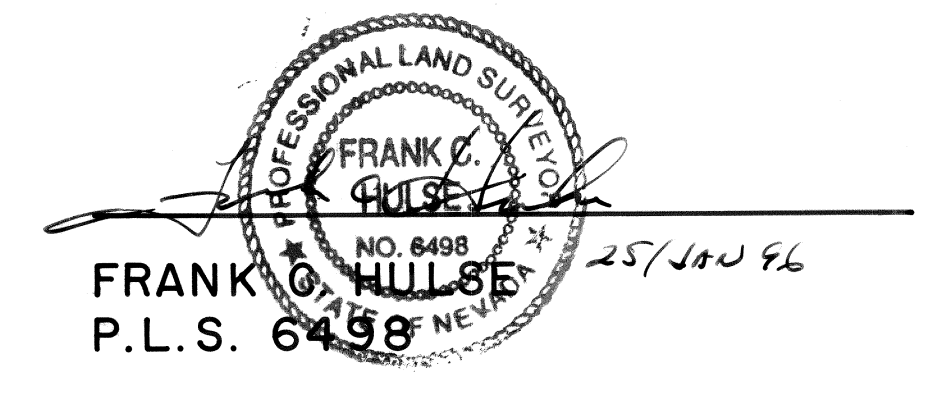


SURVEYOR'S STATEMENT

I, FRANK C. HULSE, a Professional Land Surveyor within the State of Nevada, do hereby certify, that this Record of Survey, consisting of one sheet, correctly and accurately delineates a survey made by me at the request of THE UNLV FOUNDATION, owners. Survey is of a portion of the NW1/4 of Section 2, T3S, R67E, M.D.M. All monuments are of the character noted and occupy the positions shown hereon. This survey was completed on the 13th day of December, 1995, and conforms to the definitions and provisions of N.R.S. 625.340 thru 625.380, inclusive.



LEGEND:
○ SET 5/8" REBAR P.L.S. 6498

104711
Frank Hulse
January 25, 1996
27
Plat 4
410
Yuriko Setzer
Leslie Boucher, Deputy

RECORD OF SURVEY OF A PARCEL OF LAND WITHIN THE NW1/4 OF SECTION 2, T2S, R67E, M.D.M. PREPARED AT THE INSTANCE OF THE UNLV FOUNDATION.