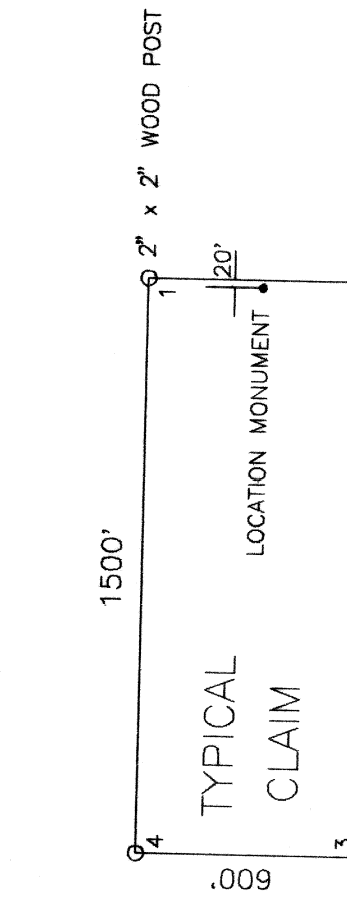
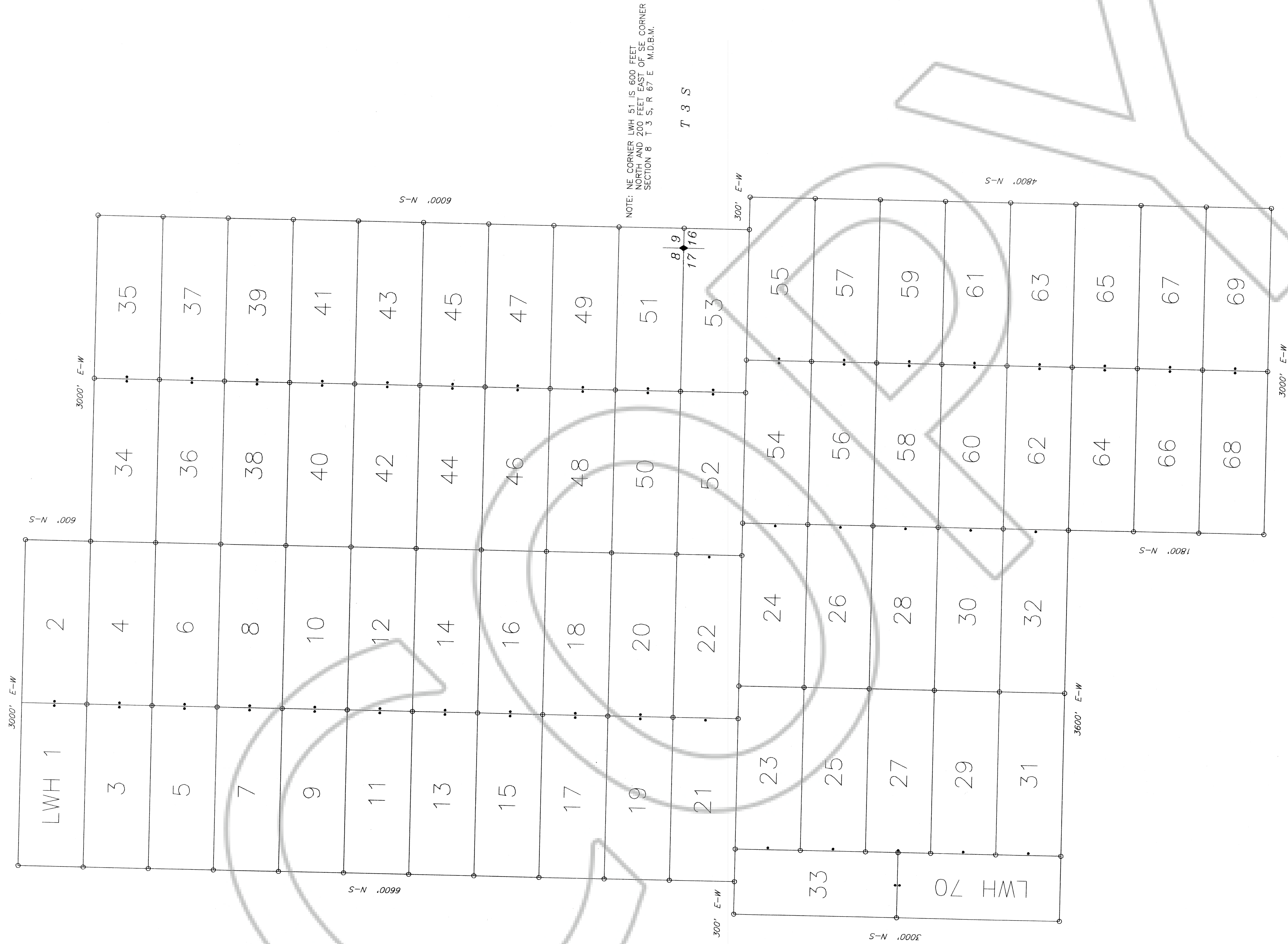
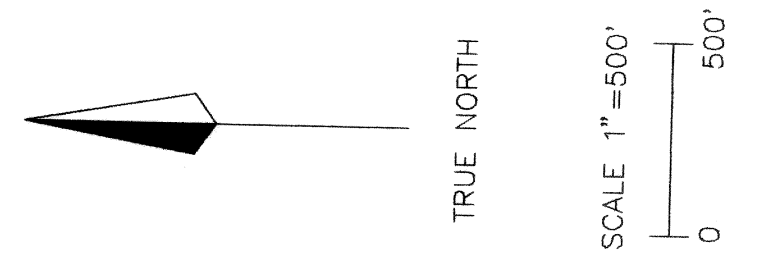


R 67 E



ALL CLAIMS ARE 1500' x 600' UNLESS OTHERWISE NOTED.



M.I.M. (U.S.A.)
 2700 YOUNGFIELD ST., SUITE 100
 LAKEWOOD, COLORADO 80215-7055

LODE CLAIMS LWH 1-70
 LINCOLN COUNTY, NEVADA
 SECTIONS: 4,5,6,7,8,9,16,17,18,20,21 T 3 S, R 67 E M.D.B.M.

LOCATED: DECEMBER 19, 1995 LWH 1-20,34-53
 DECEMBER 21, 1995 LWH 21-33,54-70

PREPARED BY: NORTH AMERICAN EXPLORATION, INC.
 472 NORTH MAIN
 KAYSVILLE, UTAH 84037

104549
 NORTH AMERICAN EXPLORATION, INC.
 January 10, 1996
 LWH 1-70
 LWH 1-20,34-53
 LWH 21-33,54-70
 MuriKo Setzer
 Julie Boucha, Deputy