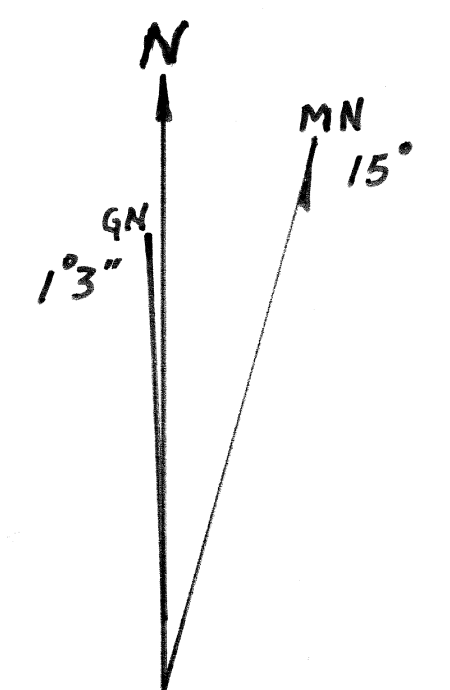
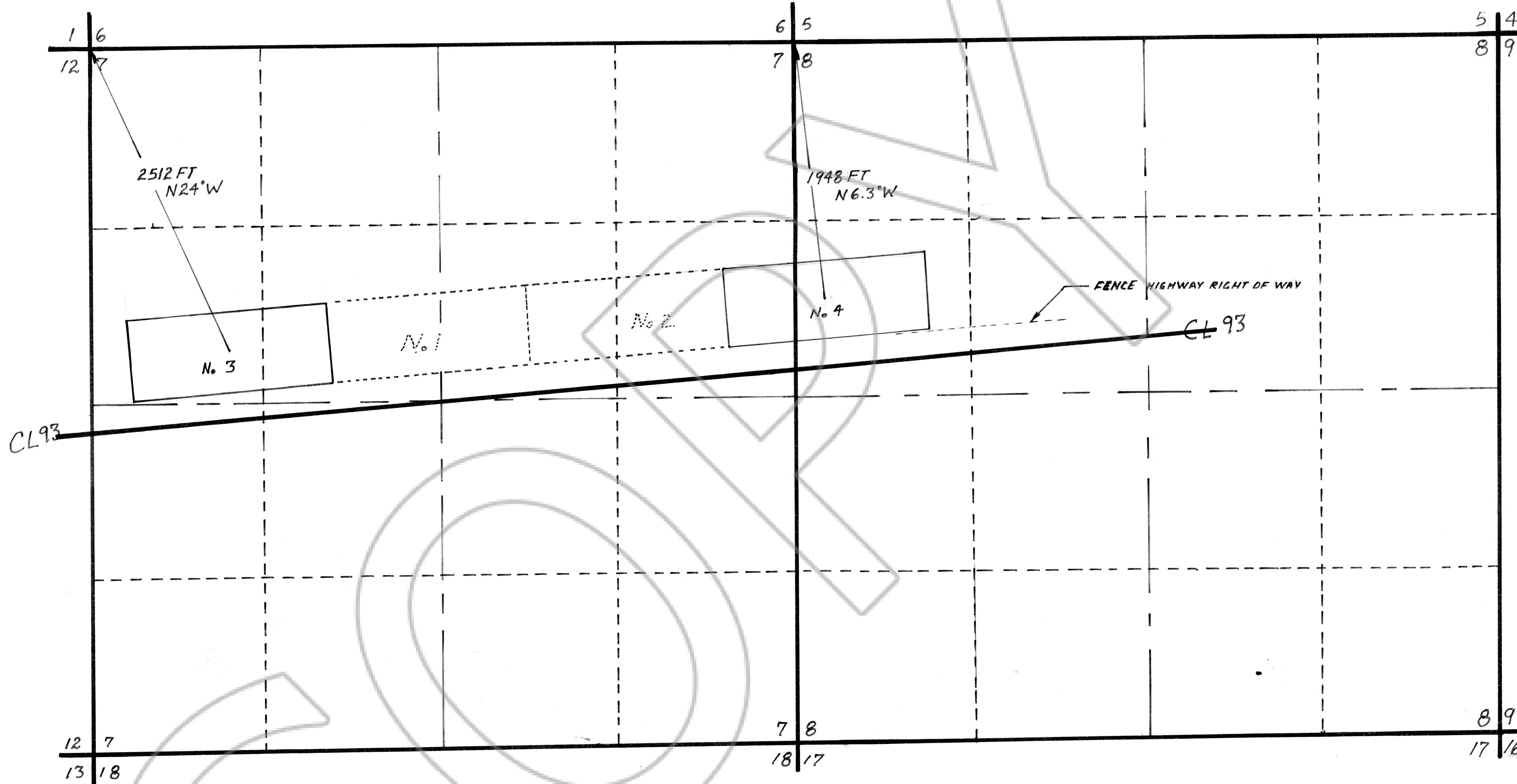


R 64 E MDM T 4 S

REF: US DEPT OF THE INTERIOR  
GEOLOGICAL SURVEY  
CALIENTE QUADRANGLE  
NEVADA



104335  
 TO  
 Robert W. Spencer  
 December 6, 1995  
 10  
 A  
 116  
 149  
 Yuriko Setzer  
 Leslie Boucher, Deputy

NOTE: BEVERLY SILVER MINES  
 No. 1 AND No. 2 ARE EXISTING.  
 No. 3 AND No. 4 ARE ADJACENT  
 TO No. 1 AND No. 2

BEVERLY SILVER MINES  
 No. 3 AND No. 4

APPROVED BY *Robert W. Spencer*