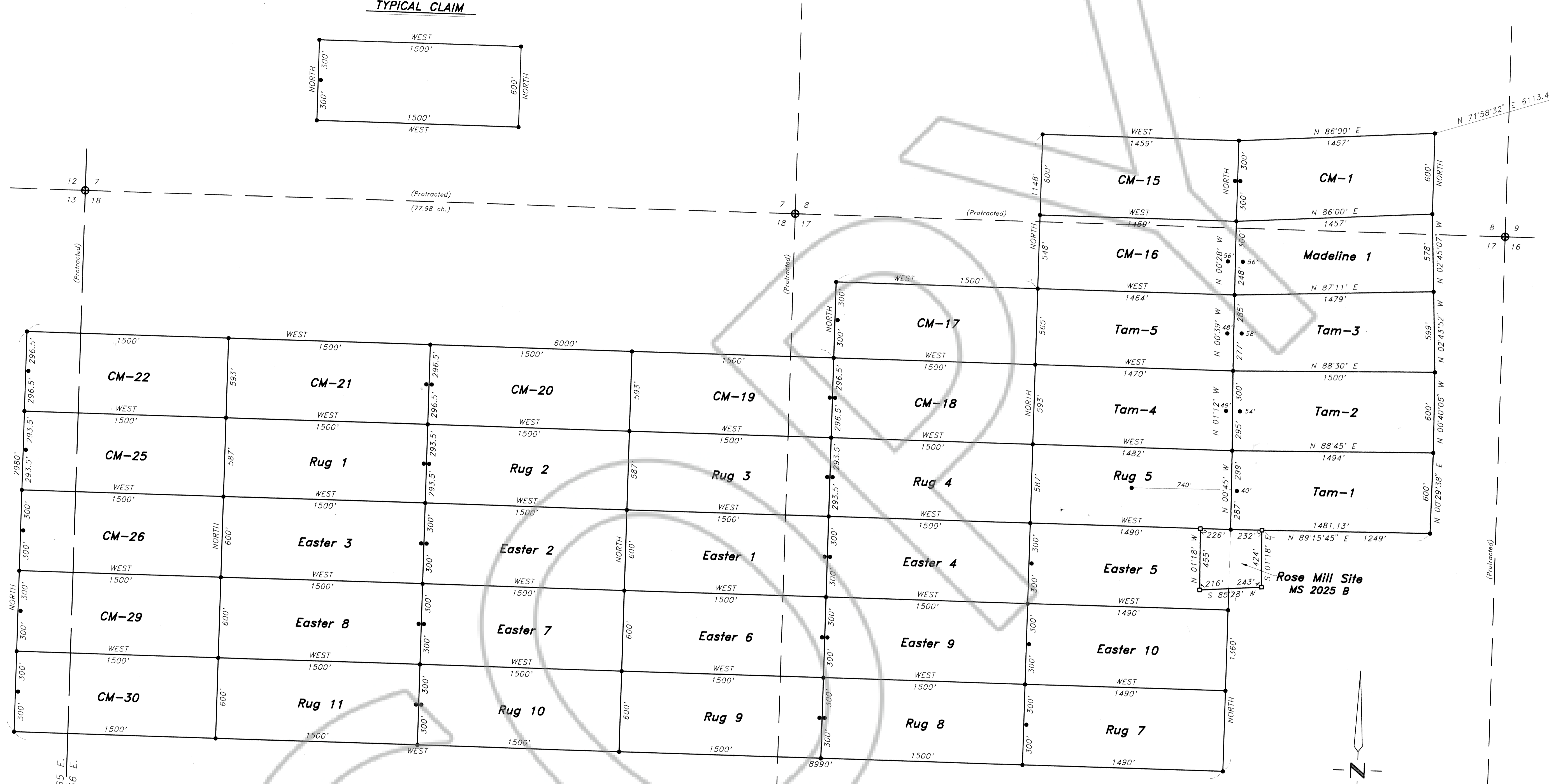
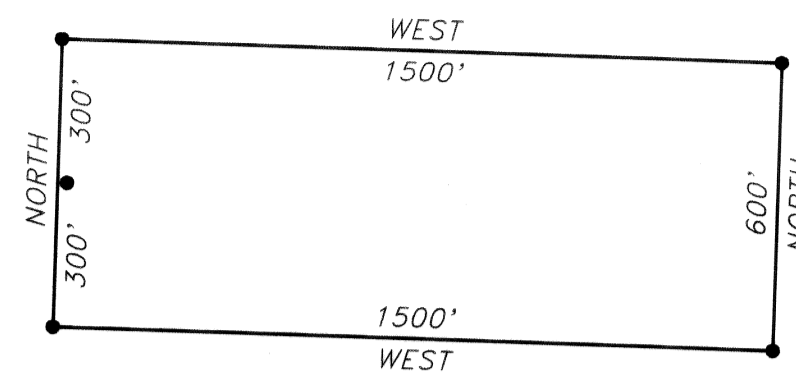
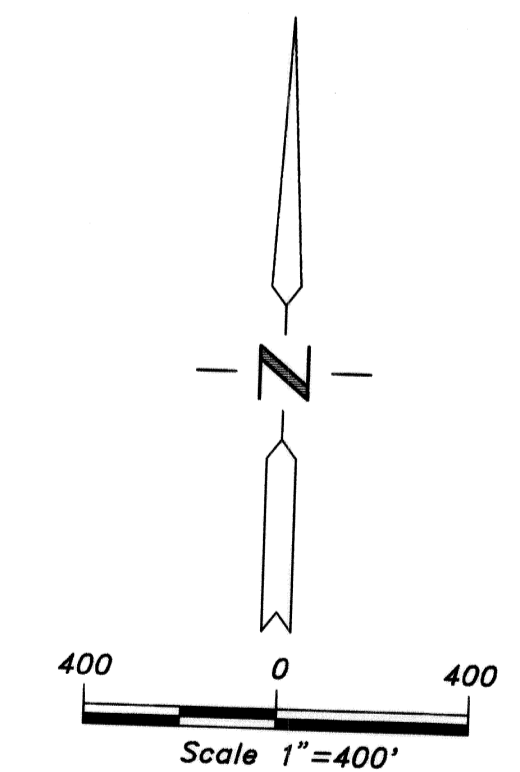


TYPICAL CLAIM



1/4 Corner
Sec. 10, T. 5 S.,
R. 66 E., M.D.M.

T. 5 S., R. 65 E.
T. 5 S., R. 66 E.



SURVEYOR'S CERTIFICATE

I, James J. Owens do hereby certify that the corners shown hereon were established by a field survey conducted under my direct supervision during October 1995 pursuant to NRS 517.040.

James J. Owens
James J. Owens
U.S. Mineral Surveyor
Date 10-31-95

NOTES

1. Survey was conducted with Geodimeter Total Station, Leica GPS System.
2. Location notices are affixed to Location Monuments and are 20" from end center unless otherwise noted.
3. Location Monuments, and corners are either/or 4"x1 1/2" metal fence post, 4" dia. x 5' PVC pipe, or a 2"x2"x5' wooden post.
4. All claims were located on Oct. 30 and 31, 1995.
5. All claims are located in unsurveyed sections.

BASIS OF BEARING

Bearings established by Lat. & Long. with Leica GPS System.

LEGEND

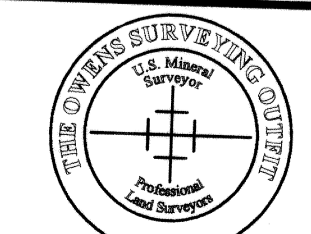
- Claim corner or location monument.
- ⊙ Calculated Section Corners
- Found scribed 4 x 4 post @ Patent Corner.

REFERENCE MAP

1. B.L.M. Protraction Diagram T. 5 S., R. 64 E., 6 S., R. 65, 66 E., T. 6 S., R. 64, 65 E. dated Feb. 3, 1964.

MAP OF AMENDED LODGE CLAIMS

for
World Wide Minerals, (U.S.A.), Inc.
Sited in Unsurveyed Sec's 8, 10, & 17, T. 5 S., R. 66 E.,
and in Unsurveyed Sec. 13, T. 5 S., R. 65 E.,
Lincoln County, Nevada



THE OWENS SURVEYING OUTFIT
Protect Mineral Land Surveying throughout the West

P.O. Box 1330
110 N. Mesquite Blvd., Suite G
Mesquite, Nevada 89024
(702) 346-2930

No. **104271**
Filed at the request of
THE OWENS SURVEYING OUTFIT
Date **Nov. 13, 1995** At **JO:CI**
File _____ Page **34**
Of Survey Maps
Official Records Book No. **116**
Lincoln County, Nevada Records
Yuriko Seltzer, Recorder
Fee _____ Deputy *Becher*

Nev-413
S.Hafen