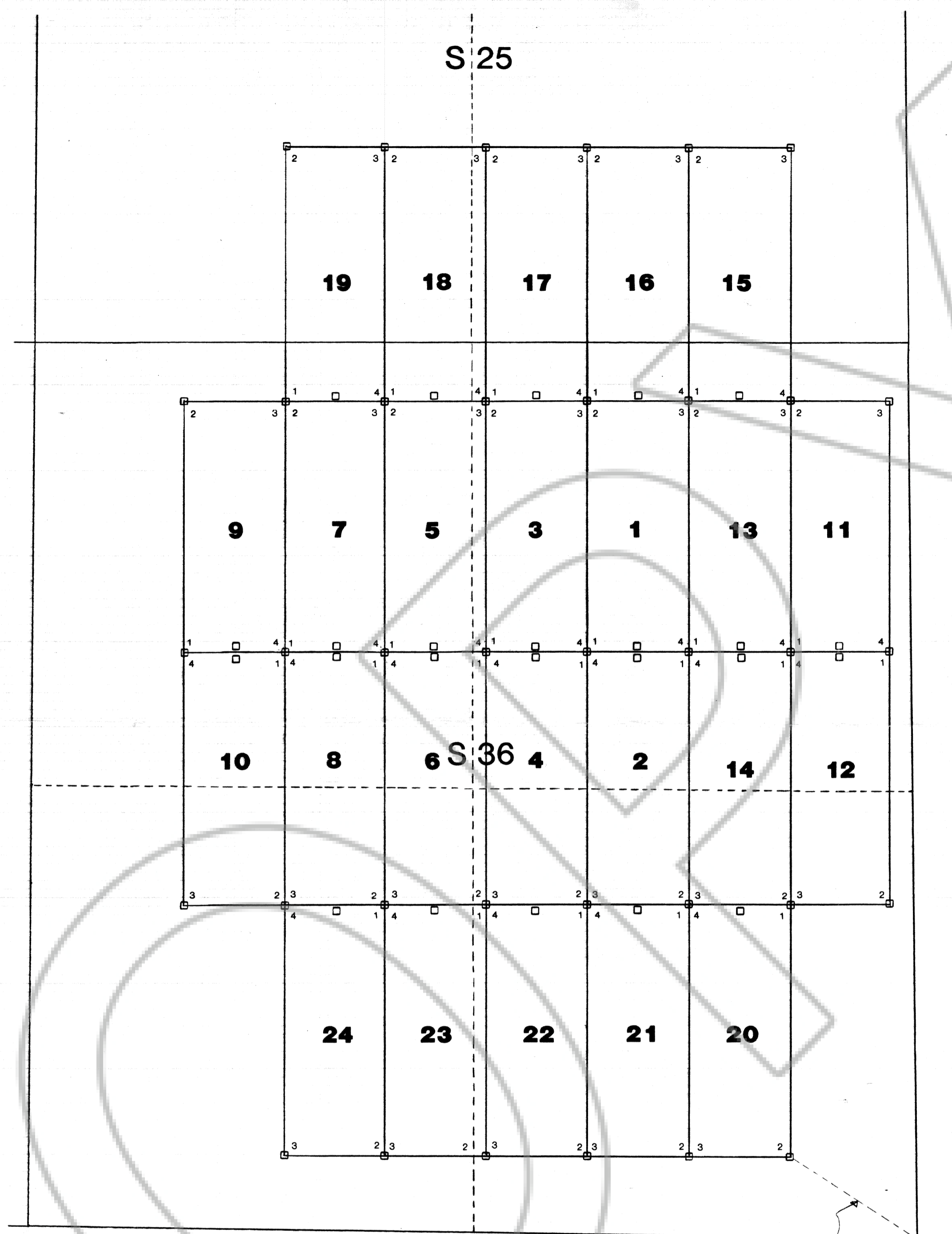


↑  
**N**  
  
500 feet



TIE: 900 feet N57°W from SE corner of S36, T3N, R65E, to SE corner of WB-20

**WB-1 through WB-24 lode mining claims  
NE, NW, SW, SE 1/4s of S36, and SW, SE 1/4s of S25, T3N, R65E,  
Lincoln County, Nevada**

**owner/locator: ASARCO Incorporated  
510 East Plumb Lane  
Reno, NV 89502**

**dates of location: September 24, 25, and  
October 22, 1995**

**ALL CLAIMS ARE 1500 FEET LONG AND 600 FEET WIDE. CORNERS AND THE DISCOVERY  
MONUMENT ARE 1.5" X 1.5" X 4' WOODEN POSTS WITH LABELED METAL TAGS**

104195  
FILE RECORDED AT REQUEST OF  
ASARCO Incorporated  
November 2, 1995  
01 MINUTES PAST 1 O'CLOCK  
P. 115 OF OFFICIAL  
RECORD PAGE 599 LINCOLN  
COUNTY, NEVADA

Yuriko Setzer  
Leslie Boucher, Deputy