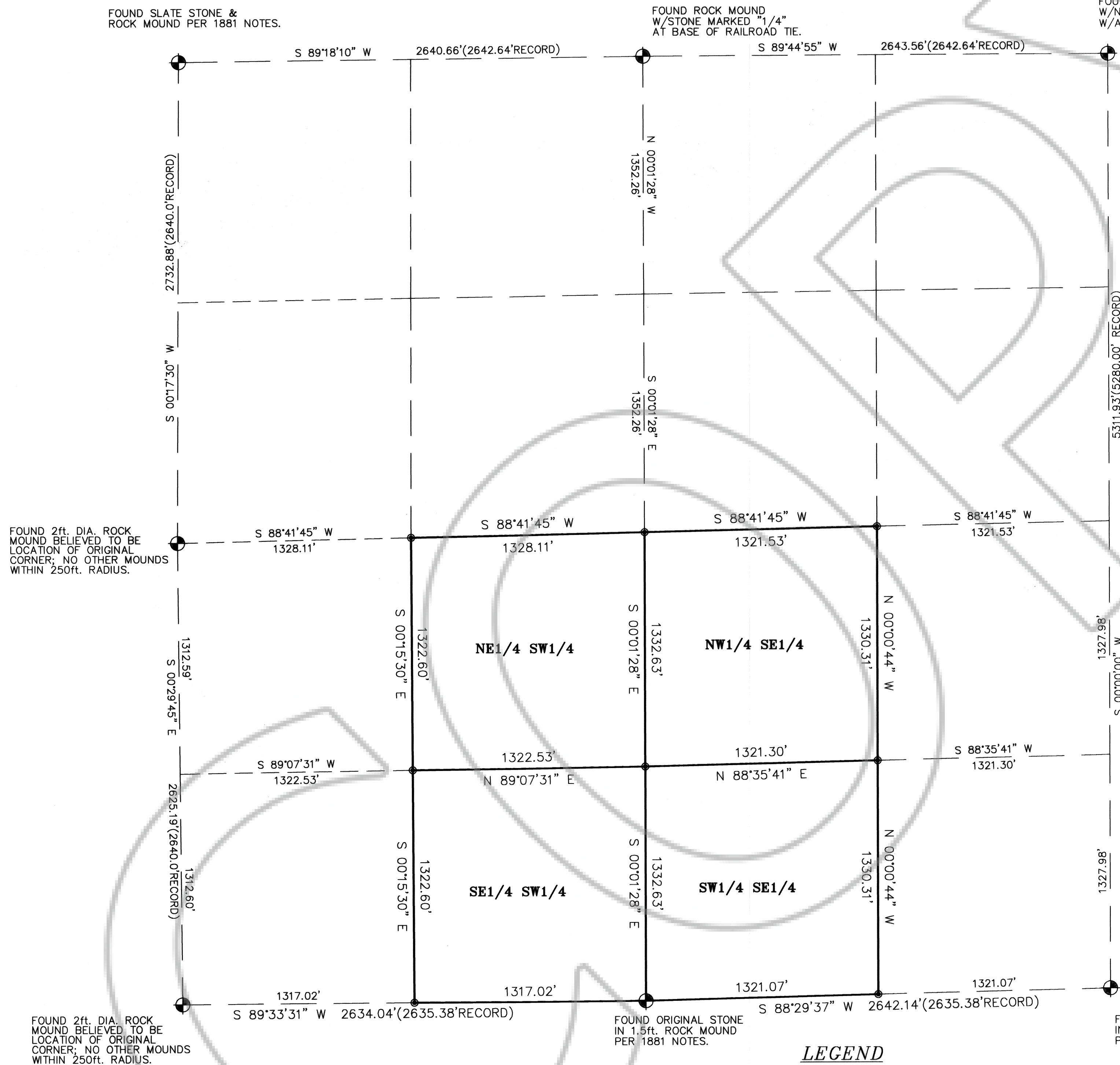


RECORD OF SURVEY BEDROC, INC.

LOCATED IN THE SOUTH HALF (S1/2) OF SECTION 24, T.11 S., R.62 E., M.D.M.
LINCOLN COUNTY, NEVADA

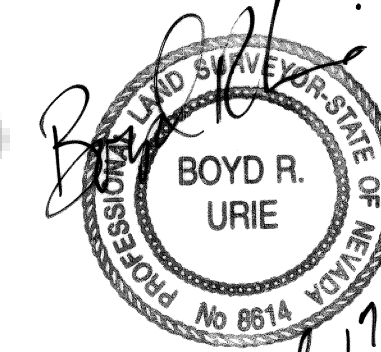


SURVEYOR'S CERTIFICATE

I, BOYD R URIE, A PROFESSIONAL LAND SURVEYOR REGISTERED IN THE STATE OF NEVADA, DO HEREBY CERTIFY THAT:

1. THIS IS A TRUE AND ACCURATE REPRESENTATION OF THE LANDS SURVEYED UNDER MY SUPERVISION AT THE INSTANCE OF PAT RICHARDS.
2. THE LANDS SURVEYED LIE WITHIN SECTION 24, TOWNSHIP 11 SOUTH, RANGE 62 EAST, M.D.M. LINCOLN COUNTY, NEVADA. AND THE SURVEY WAS COMPLETED ON OCTOBER 17, 1995.
3. THIS MAP COMPLIES WITH THE APPLICABLE STATE STATUTES PER N.R.S. AND IS NOT A SUBDIVISION.
4. THE MONUMENTS DEPICTED ON THIS MAP ARE OF THE CHARACTER SHOWN AND OCCUPY THE POSITIONS INDICATED AND ARE OF SUFFICIENT NUMBER AND DURABILITY TO ALLOW THIS SURVEY TO BE RETRACED.

BOYD R URIE
PROFESSIONAL LAND SURVEYOR
NEVADA CERTIFICATE NO. 8614



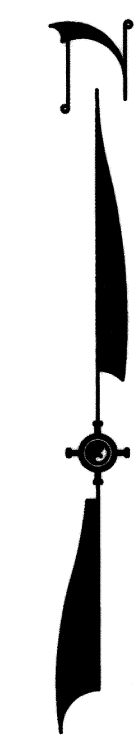
BASIS OF BEARINGS

NORTH 00°00'00" EAST, BEING THE EAST LINE OF SECTION 24, TOWNSHIP 11 SOUTH, RANGE 62 EAST, M.D.M., PER THE G.L.O. PLAT OF THE ORIGINAL SURVEY OF 1881.

REFERENCES:

1. 1881 G.L.O. DEPENDENT SURVEY OF TOWNSHIP 11 SOUTH, RANGE 62 EAST, M.D.M.

E 1/4 COR.: ORIGINAL LOCATION PLACES CORNER IN FARM ROAD FILL; CORNER NOT RECOVERED. CALCULATED BY SPLIT PER 1881 NOTES.



SCALE: 1" = 400'

LEGEND

- - SET 5/8" REBAR W/ALUM. CAP, PLS 8614.
- ⊕ - FOUND MONUMENT AS NOTED.

RECORDERS NOTE:
ANY SUBSEQUENT CHANGES TO THIS MAP SHOULD BE EXAMINED AND MAY BE DETERMINED BY REFERENCE TO THE COUNTY RECORDERS CUMULATIVE MAP INDEX (NRS 278.5695)

RECORD OF SURVEY BEDROC, INC. LOCATED IN S1/2 OF SEC.24, T. 11 S., R. 62 E., M.D.M. LINCOLN COUNTY, NEVADA.		NO. 104111 Filed at the request of SUMMIT ENGINEERING CORP. Date 10-23-95 At 9:55A.m. File _____ Page 453 of Surveys. Official Records Book Plat A Lincoln County, Nevada Records YURIKO SEITZER , Recorder Fee: 17.00 Deputy Richards
SUMMIT ENGINEERING CORPORATION CONSULTING ENGINEERS AND SURVEYORS 3684 S. HIGHWAY 445, NEVADA 89103 (702) 262-3238 FAX 252-3247	SHEET 1 OF 1	