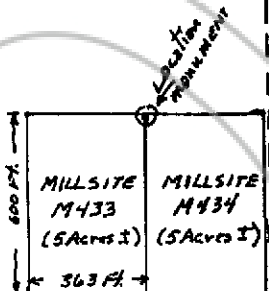


Lincoln County

Sec 17, T 35, R 56E, MDBLM.

NW 1/4 NE 1/4
SW 1/4 SE 1/4

SW 1/4 of SE 1/4 of Sec. 17, T35, R56E, MDBLM.



Describe here the position of the Claim Location Monument, if one is used.

NE Corner of Millsite M433, NW Corner of Millsite M434.

Map of the New Concept Mining, Inc. - Tempiute Millsites Mining Claim Group,
in Section 17 Township, 35 Range 56E,
in the Tempiute Mining District,
Lincoln County, Nevada.

Located on the 17th day of April, 1995, by
New Concept Mining, Inc.
Locator name and address (please print)

PO Box 55 / Corporate Office:
Manhattan, NV 89022 / 1017 S. Mountain Ave.
Monrovia, CA 91016

RECORDER'S STAMP

No. 103218
FILED AND RECORDED AT REQUEST OF
W. Jay Schofield
April 18, 1995
AT 59 MINUTES PAST 3 O'CLOCK
P. M. IN BOOK 113 OFFICE
RECORDS PAGE 32 LINCOLN
COUNTY, NEVADA
By Yuriko Setzer

By Yuriko Setzer Deputy

BOOK 113 PAGE 32