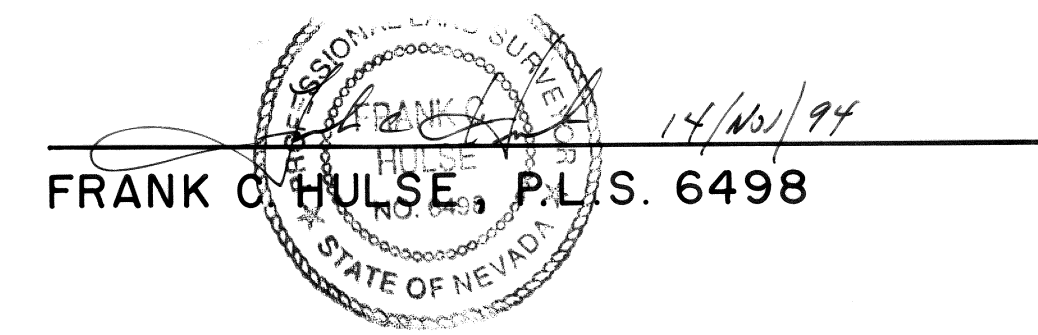


SURVEYOR'S STATEMENT

FRANK C. HULSE states that he is a Professional Land Surveyor within the State of Nevada, and that this Parcel Map consisting of one sheet, accurately and completely delineates the survey made by him and completed on the 15th day of October, 1994. This map has been prepared at the instance of Ron Heber Leavitt, Carlynn Leavitt and John E. Leavitt, Owners. All monuments are of the character and occupy the positions shown hereon and are sufficient to enable the survey to be retraced. This survey conforms to the definitions and provisions of N.R.S. 278.471 thru 278.4725, inclusive.



OWNER'S STATEMENT

We, RON HEBER LEAVITT, CARLYNN LEAVITT AND JOHN E. LEAVITT, do hereby certify that we are the owners of the land shown hereon and that we consent to the preparation and recordation of this Parcel Map showing the land plotted into parcels and that it conforms to the provisions of N.R.S. 278.471 to 278.4725, inclusive. We also offer for dedication the roads and multiple use easements as shown hereon for public usage by the City of Caliente, it's heirs and assigns and to the various utility companies as necessary for their usage.

Ron Heber Leavitt  
RON HEBER LEAVITT  
Carlynn Leavitt  
CARLYNN LEAVITT  
John E. Leavitt  
JOHN E. LEAVITT  
OWNERS

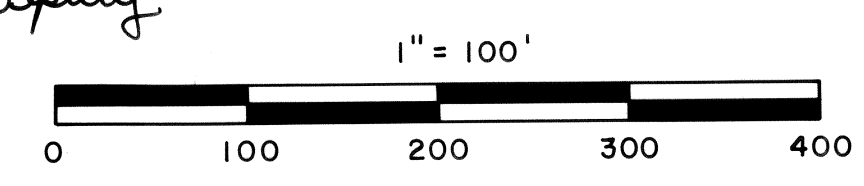
ACKNOWLEDGEMENT

STATE OF NEVADA  
COUNTY OF Clark ss  
On this 14 day of November, 1994, Ron Heber Leavitt, Carlynn Leavitt, and John E. Leavitt, appeared before me and acknowledged to me that they did approve and did execute the above instrument.

Lorina Polster  
Notary Public

My commission expires 10.5.98

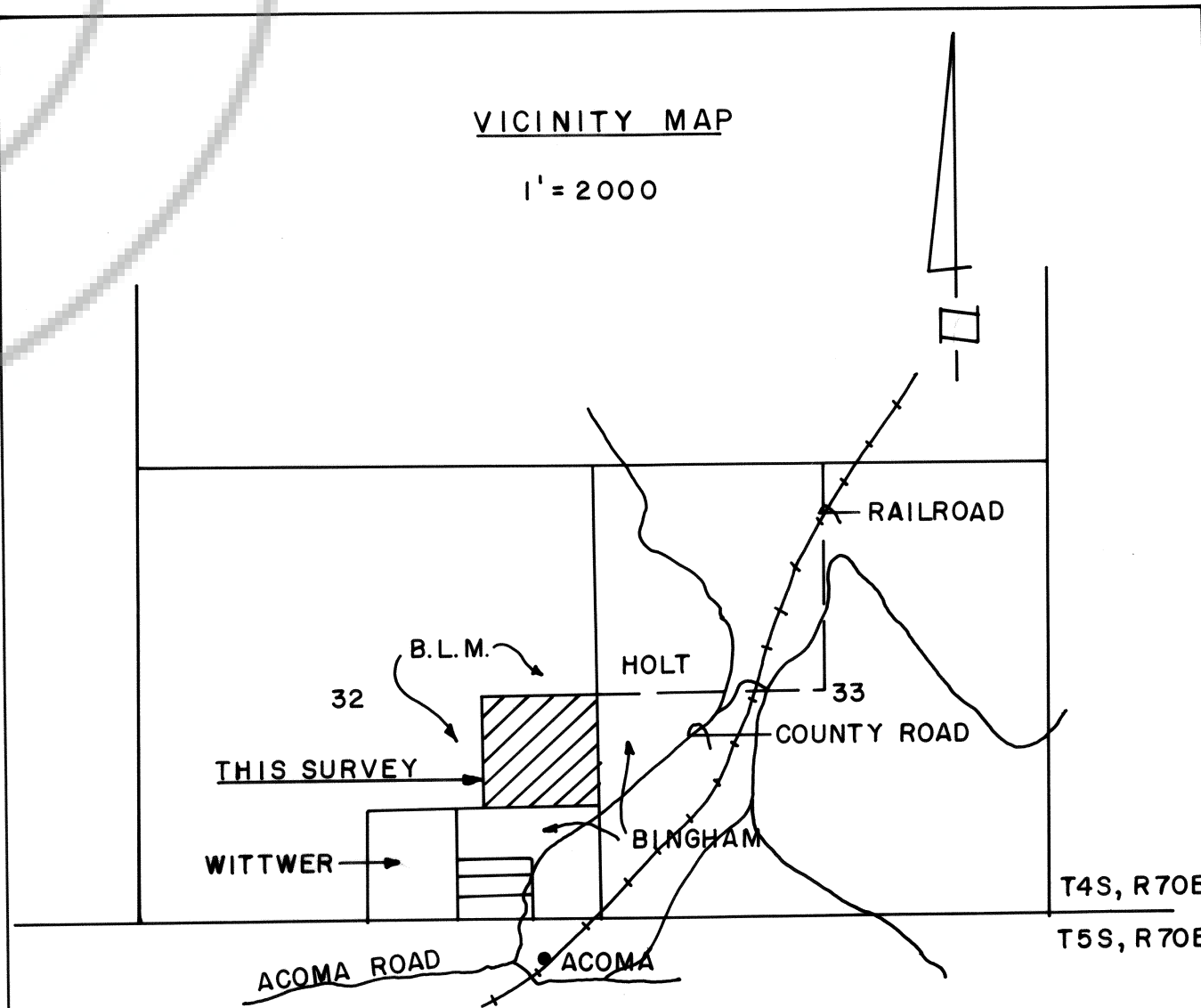
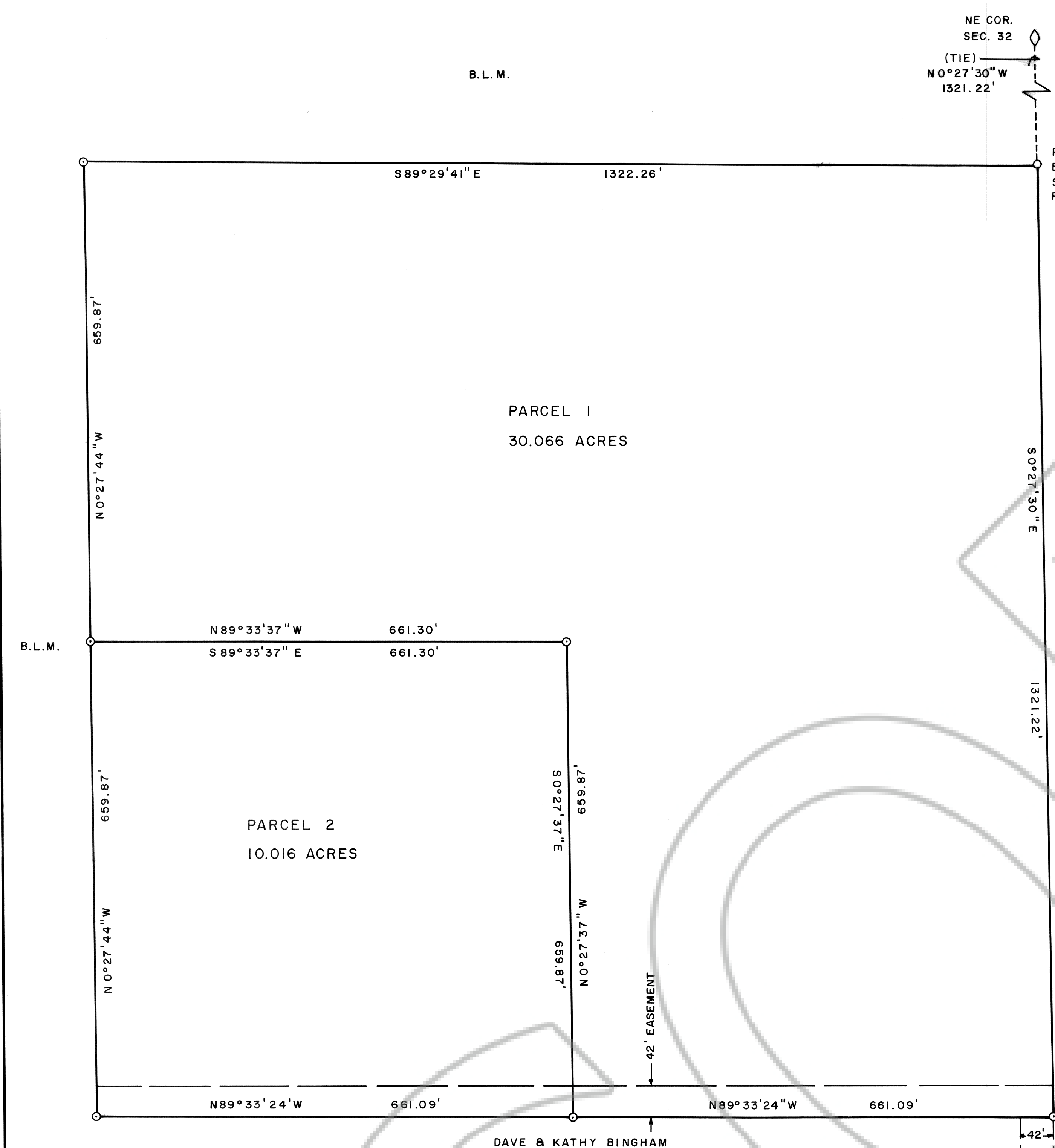
163002  
Frank Hulse  
January 31, 1995  
p 10  
A-Plat  
438  
Yuriko Setzer  
Julie Boucher, Deputy



BASIS OF BEARING : EAST LINE OF SEC. 32, T4S, R70E, M.D.M. PLAT A PAGE 264

PARCEL MAP OF THE NE 1/4 OF THE SE 1/4 OF SECTION 32, T4S, R70E, M.D.M. PREPARED AT THE INSTANCE OF RON HEBER LEAVITT, CARLYNN LEAVITT & JOHN E. LEAVITT.

FRANK C. HULSE/s.f. NOV. 1994



APPROVALS

This is to certify that the Planning Commission in and for Lincoln County, Nevada, on this 14<sup>th</sup> day of November, 1994, did approve for the purposes of land division and accept in behalf of the public this map and any parcels of land offered for dedication for public use in conformity with the terms of the offer of dedication per Section 278 of the Nevada Revised Statutes.

Approved this 20<sup>th</sup> day of January, 1995, by the Lincoln County Commission, as a Parcel Map.

Sharon Culverwell  
Chairman  
John E. Leavitt  
Attest: Clerk  
Vell E. Washburn  
Chairman