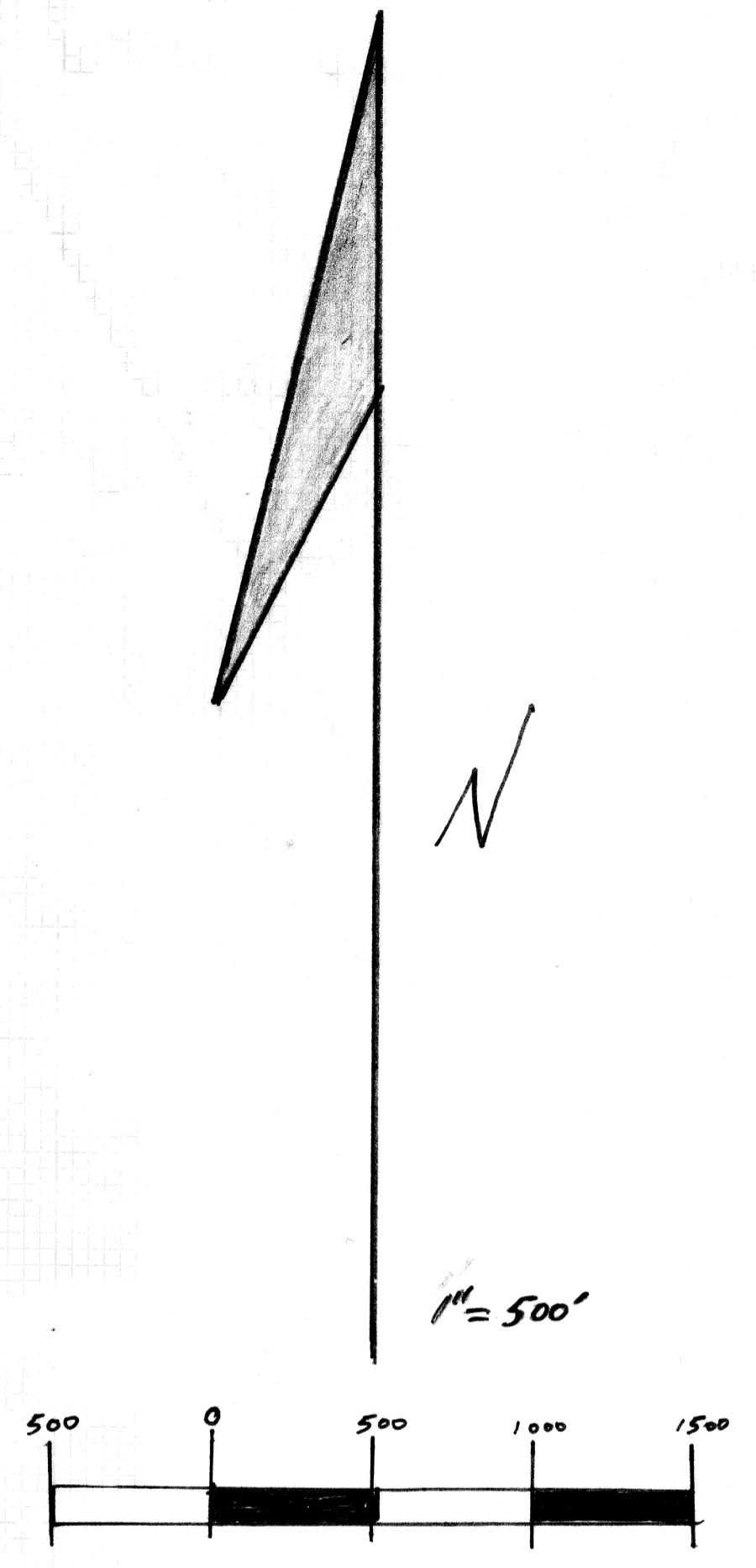
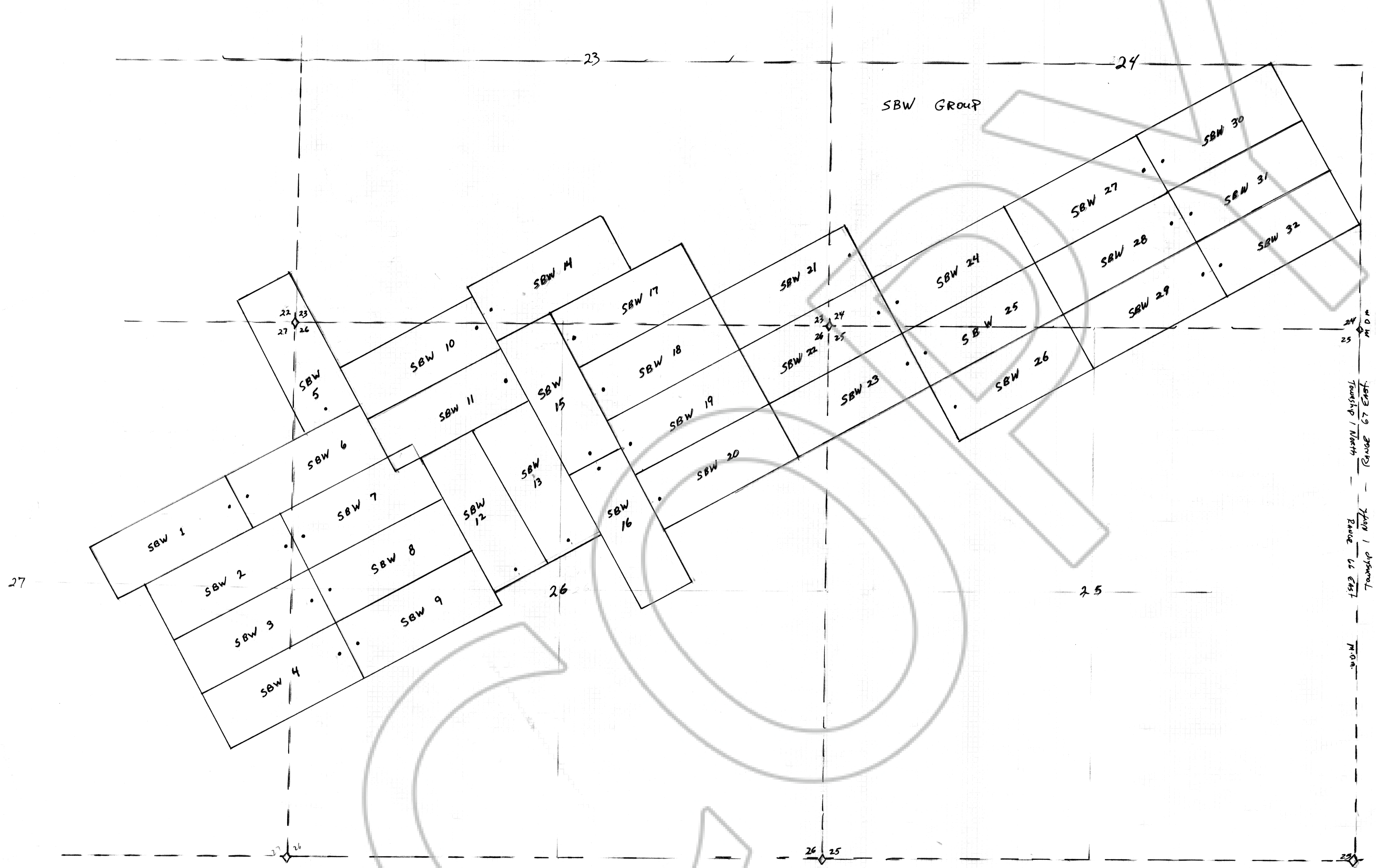


Township 1 North, Range 66 East,  
 Mount Diablo Meridian



SBW Group # 1-32  
 Mountain Mines Inc.  
 Mr. ELY ADES - PRESIDENT  
 Box 430  
 Las Vegas Nevada 89125-0430

SBW 1-32  
 Sections 22, 23, 24, 25, 26, + 27  
 T 1 N, R 66 E, M.D.M

102996  
 FILED AND RECORDED AT REQUEST OF  
 Frank Hulse  
 January 30, 1995  
 COUNTY CLERK'S OFFICE  
 COUNTY OF CLATSOP  
 CLATSOP COUNTY, OREGON  
 COUNTY CLERK  
 Yuriko Setzer  
 Public Notary, Deputy