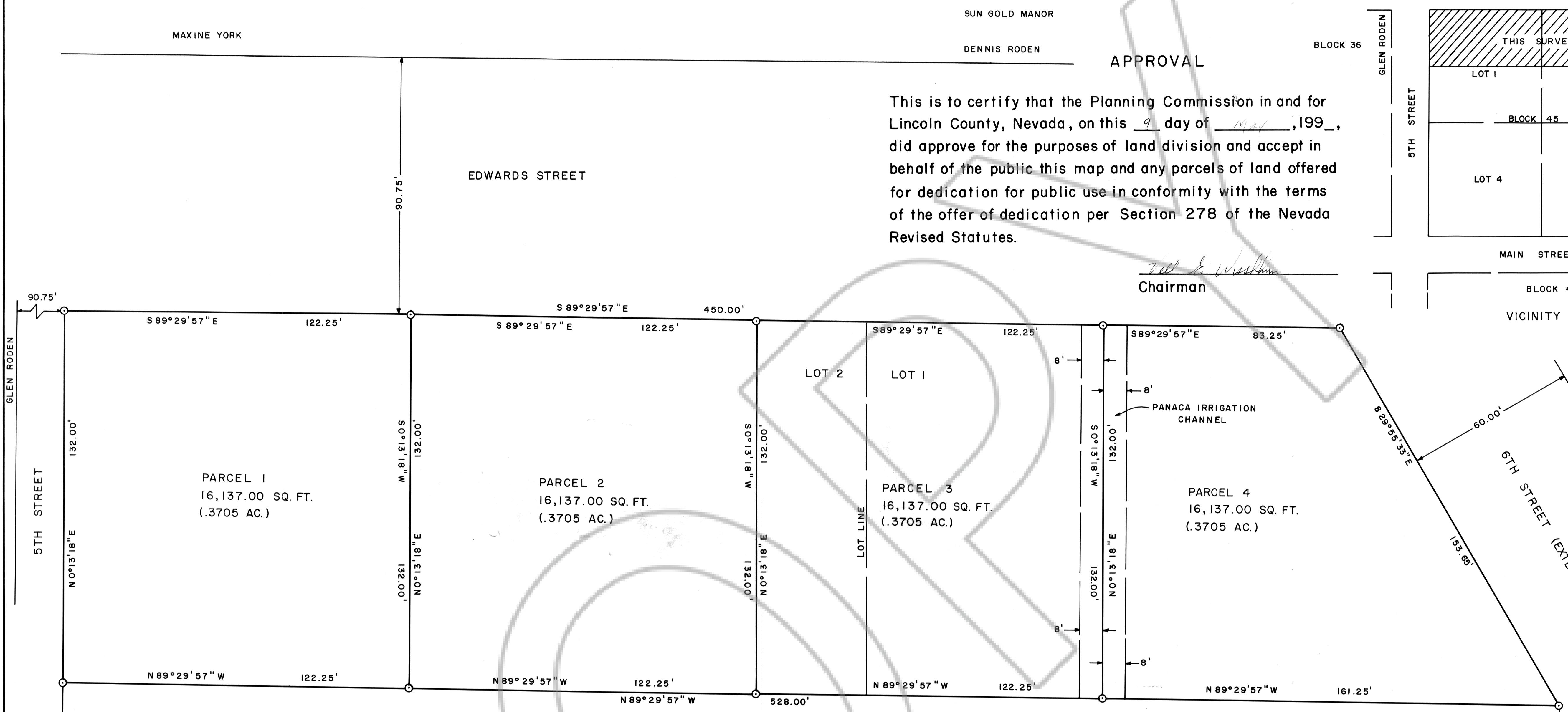


N1/2 LOTS 1 & 2, BLOCK 45, PANACA TOWNSITE

SCHOOL DISTRICT OFFICE

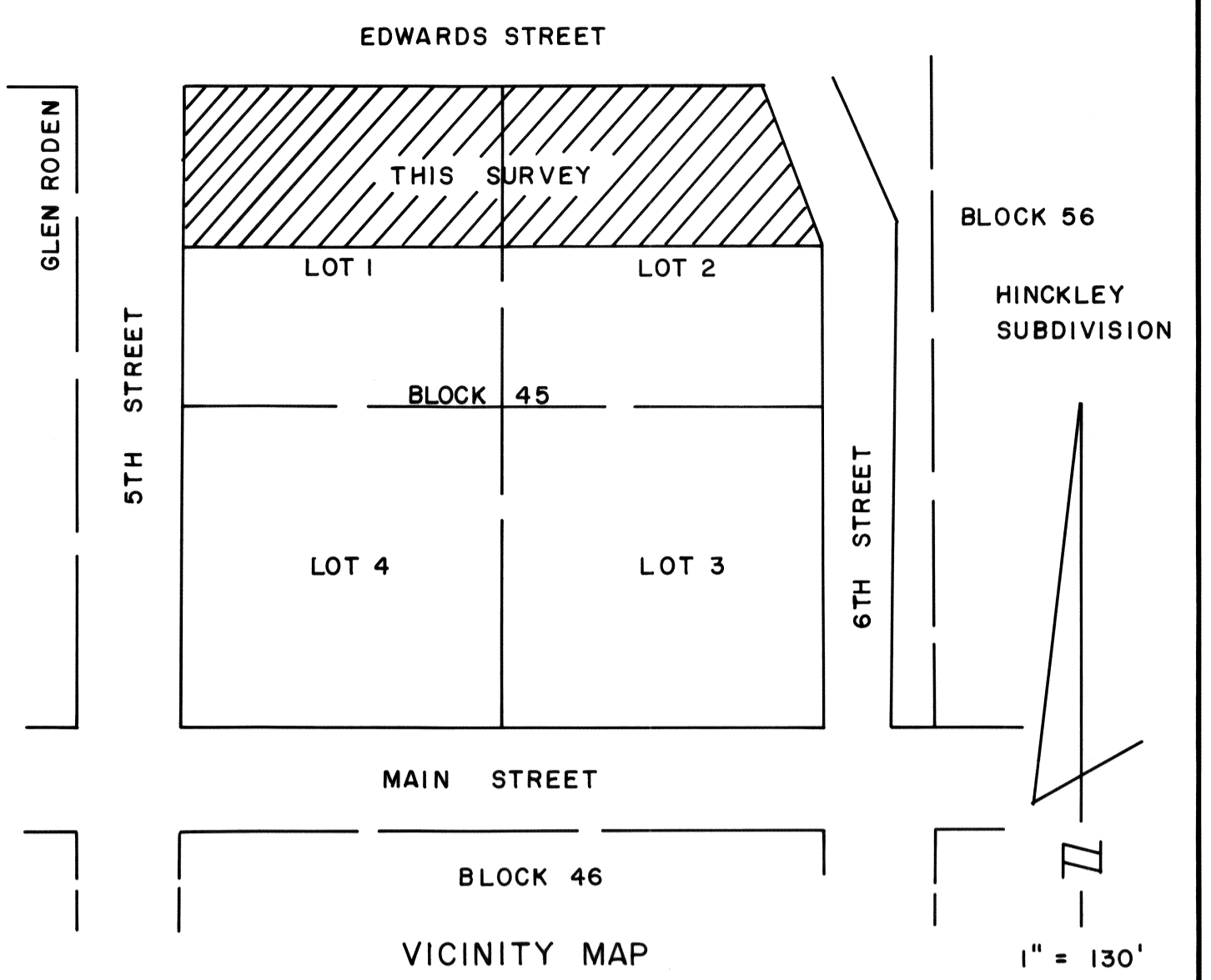
MAXINE YORK BLOCK 44 SUN GOLD MANOR

417



APPROVAL
 This is to certify that the Planning Commission in and for Lincoln County, Nevada, on this 9 day of May, 1994, did approve for the purposes of land division and accept in behalf of the public this map and any parcels of land offered for dedication for public use in conformity with the terms of the offer of dedication per Section 278 of the Nevada Revised Statutes.

John E. Washburn
 Chairman



SURVEYOR'S STATEMENT

Frank C. Hulse states that he is a Professional Land Surveyor within the State of Nevada, and that this Parcel Map consisting of one sheet, accurately and completely delineates the survey made by him and completed on the 27th day of April, 1994. This map has been prepared at the instance of the Dean P. & Florence W. Thirirot, Trust, Owners. All monuments are of the character and occupy the positions shown hereon and are sufficient to enable the survey to be retraced. This survey conforms to the definitions and provisions of N.R.S. 278.471 thru 278.4725, inclusive.

Frank C. Hulse
 Frank C. Hulse, P.L.S. 6498

OWNER'S CERTIFICATE

We, DEAN P. THIRIOT and FLORENCE W. THIRIOT, do hereby certify that we are the owners of the land shown hereon and that we consent to the preparation and recordation of this Parcel Map showing the land plotted into parcels and that it conforms to the provisions of N.R.S. 278.471 to 278.4725, inclusive. We also offer for dedication the roads and multiple use easements as shown hereon for public usage by Lincoln County, it's heirs and assigns and to the various utility companies as necessary for their usage.

Dean P. Thirirot
 Dean P. Thirirot
 OWNERS
Florence W. Thirirot
 Florence W. Thirirot

ACKNOWLEDGEMENT

STATE OF UTAH
 COUNTY OF SALT LAKE ss
 On this 5th day of May, 1994, DEAN P. THIRIOT and FLORENCE W. THIRIOT, appeared before me and acknowledged to me that they did approve and did execute the above instrument.

Ann K. Speer
 Notary Public

APPROVALS

Approved this 6th day of April, 1994, by the Panaca Town Board as a Parcel Map.

Robert W. Busby
 Chairman

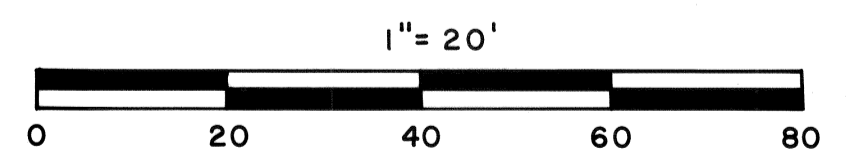
Approved this 23rd day of May, 1994, by the Lincoln County Commission as a Parcel Map.

Thomas Culverwell
 Chairman

Attest: *Connie Hogan*
 Clerk

101921-A
 Frank Hulse
 June 7, 1994
 p 15
 Plata 12
 417

Juriko Setzer
Leslie Boucher, Deputy



PARCEL MAP OF NORTH 1/2 OF LOTS 1 & 2, BLOCK 45, PANACA TOWNSITE.
 PREPARED AT THE INSTANCE OF DEAN P. THIRIOT, TRUST.