

SURVEYOR'S STATEMENT

FRANK C. HULSE states that he is a Professional Land Surveyor within the State of Nevada, and that this Parcel Map consisting of one sheet, accurately and completely delineates the survey made by him and completed on the 30th day of August, 1994. This map has been prepared at the instance of WILLIAM D. HOGAN and A. CORRINE HOGAN, owners. All monuments are of the character and occupy the positions shown hereon and are sufficient to enable the survey to be retraced. This survey conforms to the definitions and provisions of N.R.S. 278.471 thru 278.4725, inclusive.

Frank C. Hulse
6/20/94
PROFESSIONAL LAND SURVEYOR
FRANK C. HULSE
NO. 6498
STATE OF NEVADA

OWNER'S CERTIFICATE

We, WILLIAM D. AND A. CORRINE HOGAN, do hereby certify that we are the owners of the land shown hereon and that we consent to the preparation and recordation of this Parcel Map showing the land plotted into parcels and that it conforms to the provisions of N.R.S. 278.471 to 278.4725, inclusive. We also offer for dedication the roads and multiple use easements as shown hereon for public usage by Lincoln County, it's heirs and assigns and to the various utility companies as necessary for their usage.

William D. Hogan
OWNERS
A. Corrine Hogan

ACKNOWLEDGEMENT

STATE OF NEVADA
COUNTY OF LINCOLN ss

On this 6th day of October, 1994, William D. and A. Corrine Hogan appeared before me and acknowledged to me that they did approve and did execute the above instrument.

Judy A. Stelmant
Notary Public

My commission expires: 1-21-98

APPROVALS

Approved this 6th day of October, 1994, by the Pioche Town Board as a Parcel Map.

John Condie
Chairman

This is to certify that the Planning Commission in and for Lincoln County, Nevada, on this 10th day of Oct, 1994, did approve for the purposes of land division and accept in behalf of the public this map and any parcels of land offered for dedication for public use in conformity with the terms of the offer of dedication per Section 278 of the Nevada Revised Statutes.

Vicki Washburn
Chairman

Approved this 25th day of October, 1994, by the Lincoln County Commission as a Parcel Map.

Sharon Chervell
Chairman

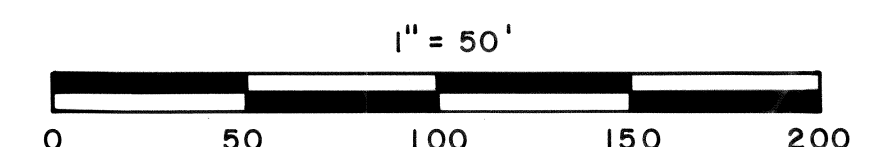
Attest: Corrine Hogan
Clerk

LEGEND:

- SET 5/8" REBAR P.L.S. 6498
- FOUND 5/8" REBAR

102764
Corrine Hogan
November 21, 1994
p. 55 Plat A 433
Yuriko Setzer
Leslie Boucher, Deputy

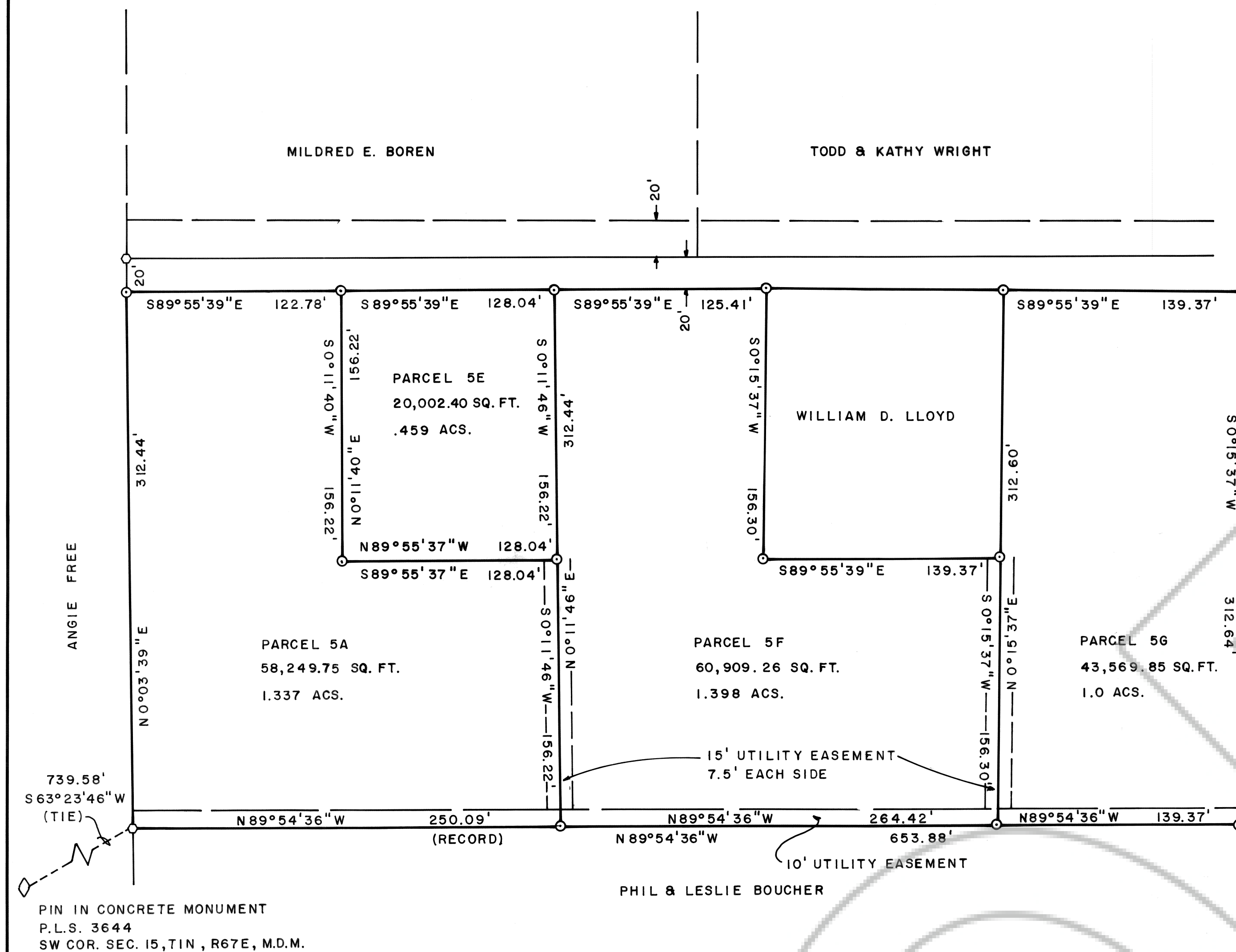
ASSESSOR'S PARCEL 01-191-50
ALL CORNERS 5/8" REBAR P.L.S. 6498
REFERENCE PLAT A PAGE 242 FOR
BASIS OF BEARING RE-PARCELLING
OF PARCEL 5



SUBSEQUENT

PARCEL MAP OF A PORTION OF THE SW1/4 OF SECTION 15, TIN, R67E, M.D.M. PREPARED AT THE INSTANCE OF WILLIAM D. AND A. CORRINE HOGAN.

FRANK C. HULSE/s.f. AUG. 1994



PIN IN CONCRETE MONUMENT
P.L.S. 3644
SW COR. SEC. 15, TIN, R67E, M.D.M.

VICINITY MAP
NOT TO SCALE

