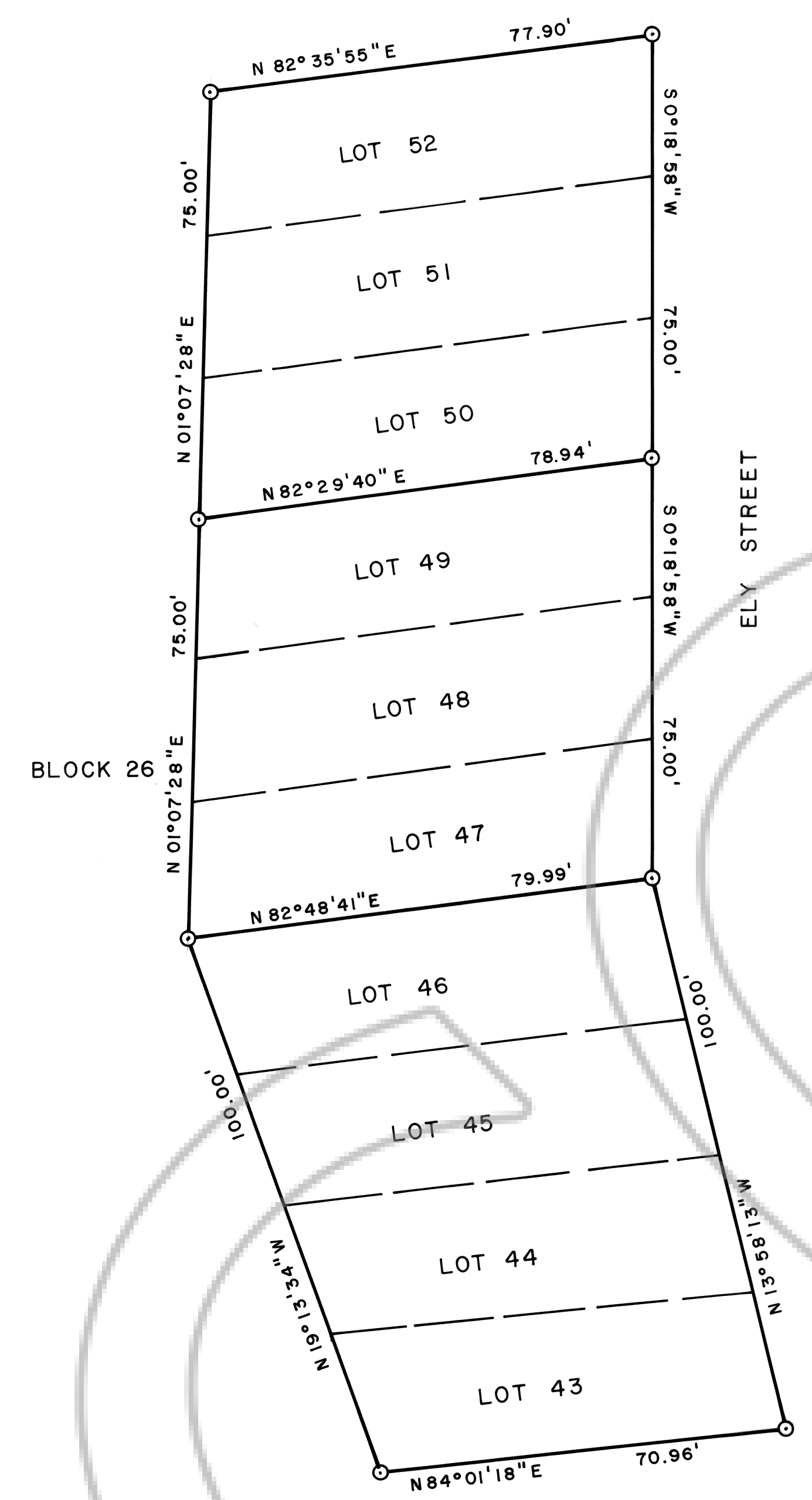


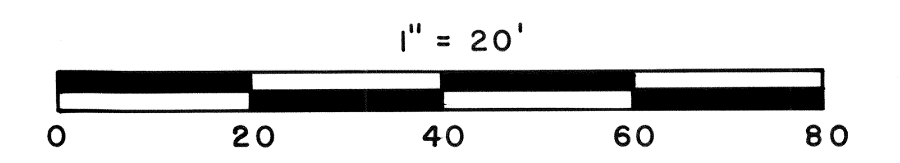
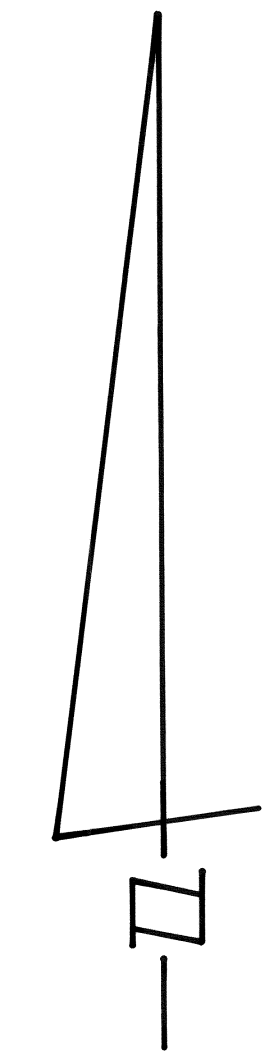
SURVEYOR'S STATEMENT

I, FRANK C. HULSE, a Professional Land Surveyor within the State of Nevada, do hereby certify that this Record of Survey consisting of one sheet, correctly and accurately delineates a retracement survey made by me at the request of EVAN BLYTHIN AND BARBARA M. BLYTHIN. Survey is of a portion of Block 26, Pioche Townsite within Section 22, T1N, R67E, M.D.M. All monuments are of the character noted and occupy the positions shown hereon. This survey was completed on the 26th day of September, 1994, and conforms to the definitions and provisions of N.R.S. 625.340 thru 625.380, inclusive.

A PORTION OF BLOCK 26, PIOCHE TOWNSITE



Professional Land Surveyor
FRANK C. HULSE
NO. 6498
STATE OF NEVADA
12/2/94
6498



102484
FILED AND RECORDED AT REQUEST OF
Evan Blythin
October 7, 1994
45 MINUTES PAST 9 O'CLOCK
A.M. IN BOOK DATA OF OFFICIAL
RECORDS, PAGE 481 LINCOLN
COUNTY, NEVADA.
Yuriko Setzer
Leslie Boucher, Deputy

RECORD OF SURVEY OF A PORTION
OF BLOCK 26, PIOCHE TOWNSITE,
WITHIN SEC. 22, T1N, R67E, M.D.M.
PREPARED AT THE REQUEST OF
EVAN BLYTHIN, OWNER.

FRANK C. HULSE/s.f. SEPT. 1994