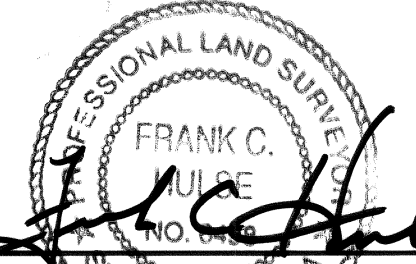
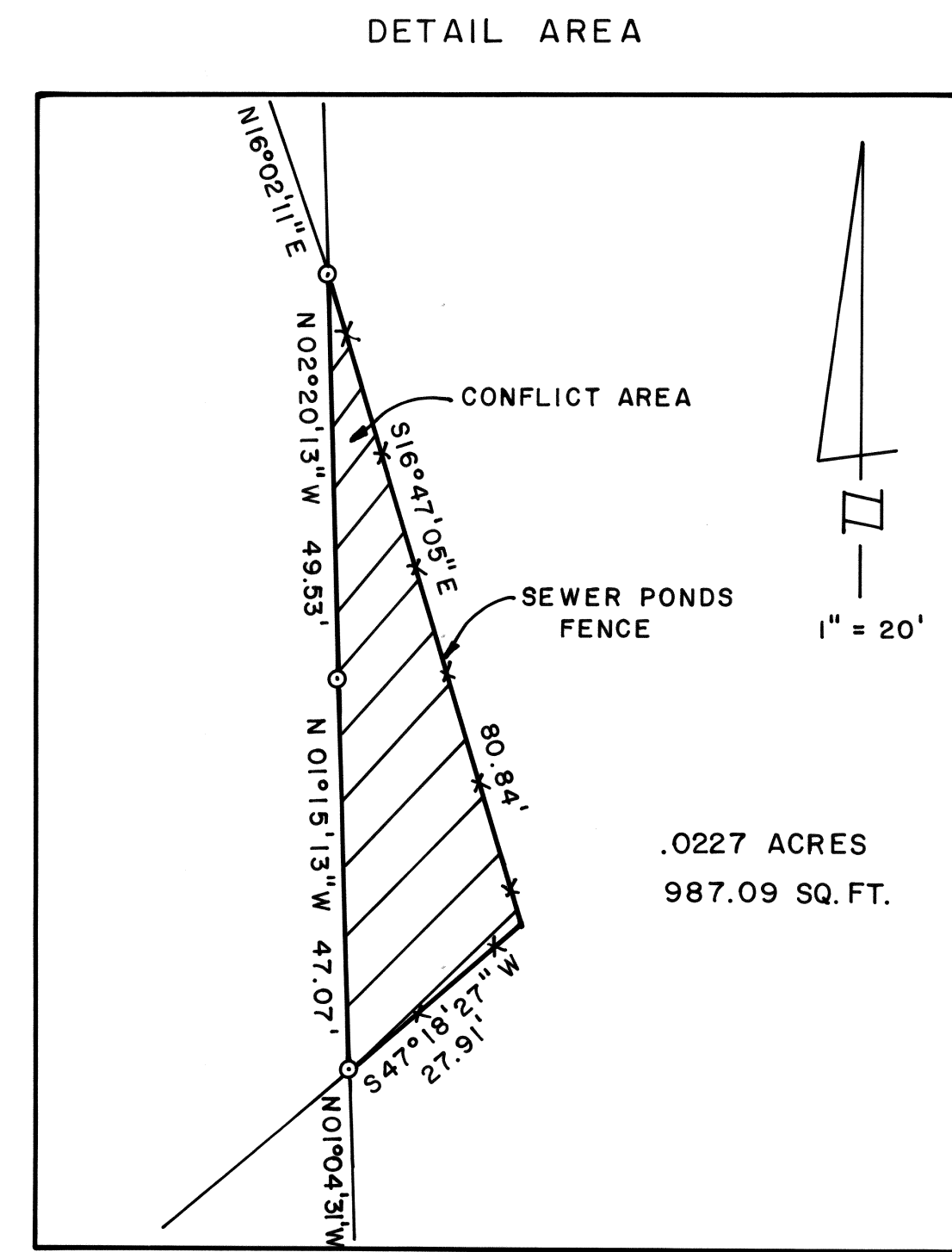
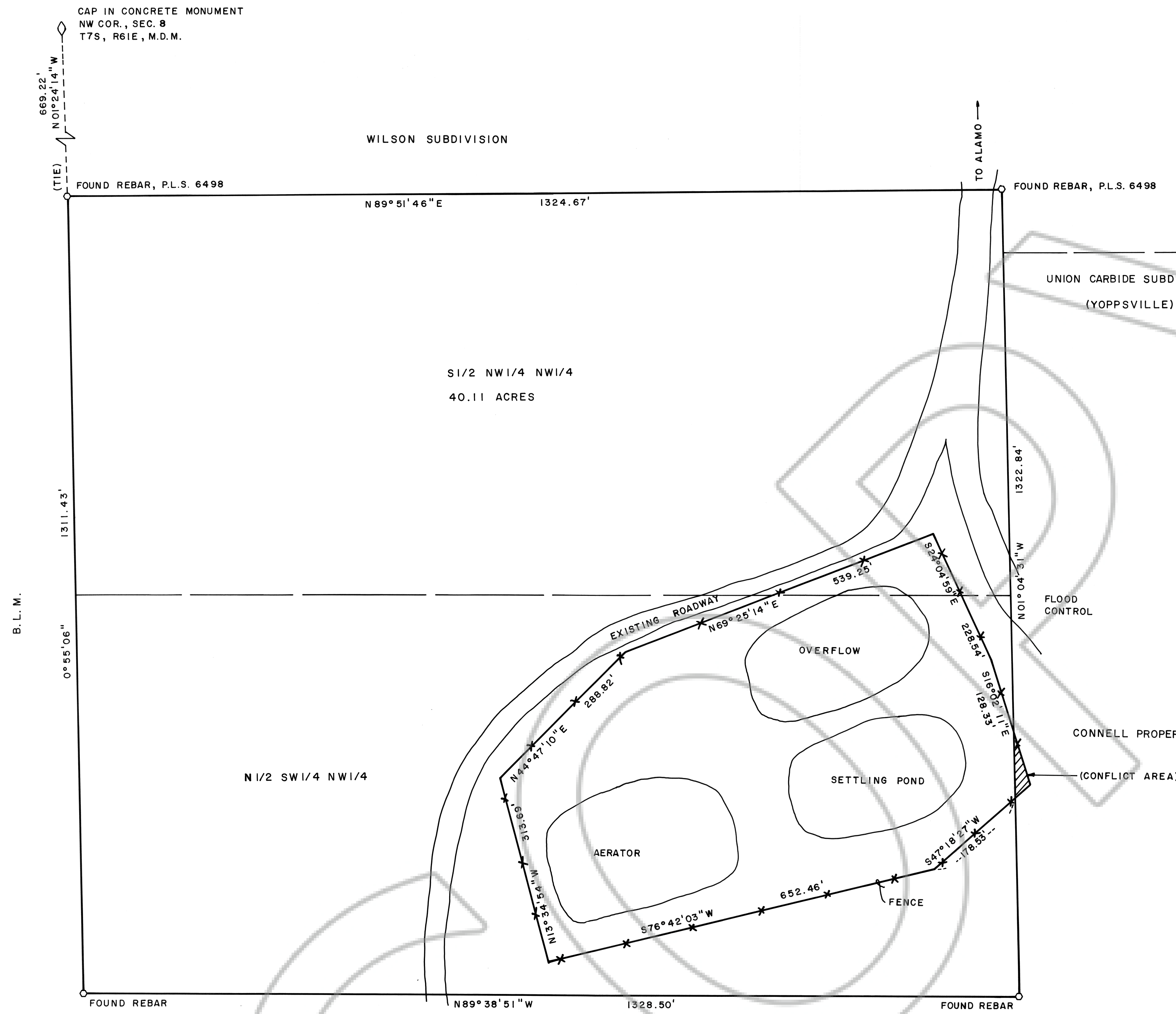


SURVEYOR'S STATEMENT

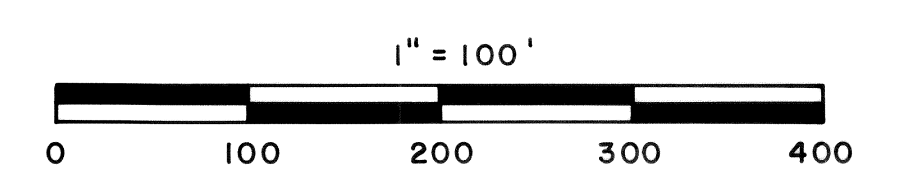
I, FRANK C. HULSE, a Professional Land Surveyor within the State of Nevada, do hereby certify that this Record of Survey consisting of one sheet, correctly and accurately delineates a survey made by me at the request of THE LINCOLN COUNTY COMMISSION of the boundaries of the Alamo Sewer Ponds within the S1/2 of the NW1/4 of the NW1/4 and the N1/2 of the SW1/4 of the NW1/4 all within T7S, R61E, M.D.M. All monuments are of the character noted and occupy the positions shown hereon. This survey was completed on the 7th day of January, 1994, and conforms to the definitions and provisions of N.R.S. 625.340 thru 625.380, inclusive.



FRANK C. HULSE 26 Sept. 1994  
P.L.S. 6498  
LINCOLN COUNTY SURVEYOR



LEGEND  
O FOUND 5/8" REBAR



102442  
FILED AND RECORDED AT REQUEST OF  
Lincoln County Commissioners  
Sept. 26, 1994  
50 MINUTES PAST 2 O'CLOCK  
P.M. IN BOOK Plate 2 OF OFFICIAL  
RECORDS PAGE 430 LINCOLN  
COUNTY, NEVADA  
Yuriko Setzer  
Public Notary, Deputy

RECORD OF SURVEY OF THE S1/2 NW1/4  
NW1/4 AND THE N1/2 SW1/4 NW1/4  
OF SEC. 8, T7S, R61E, M.D.M.  
PREPARED AT THE INSTANCE OF  
LINCOLN COUNTY COMMISSION.