

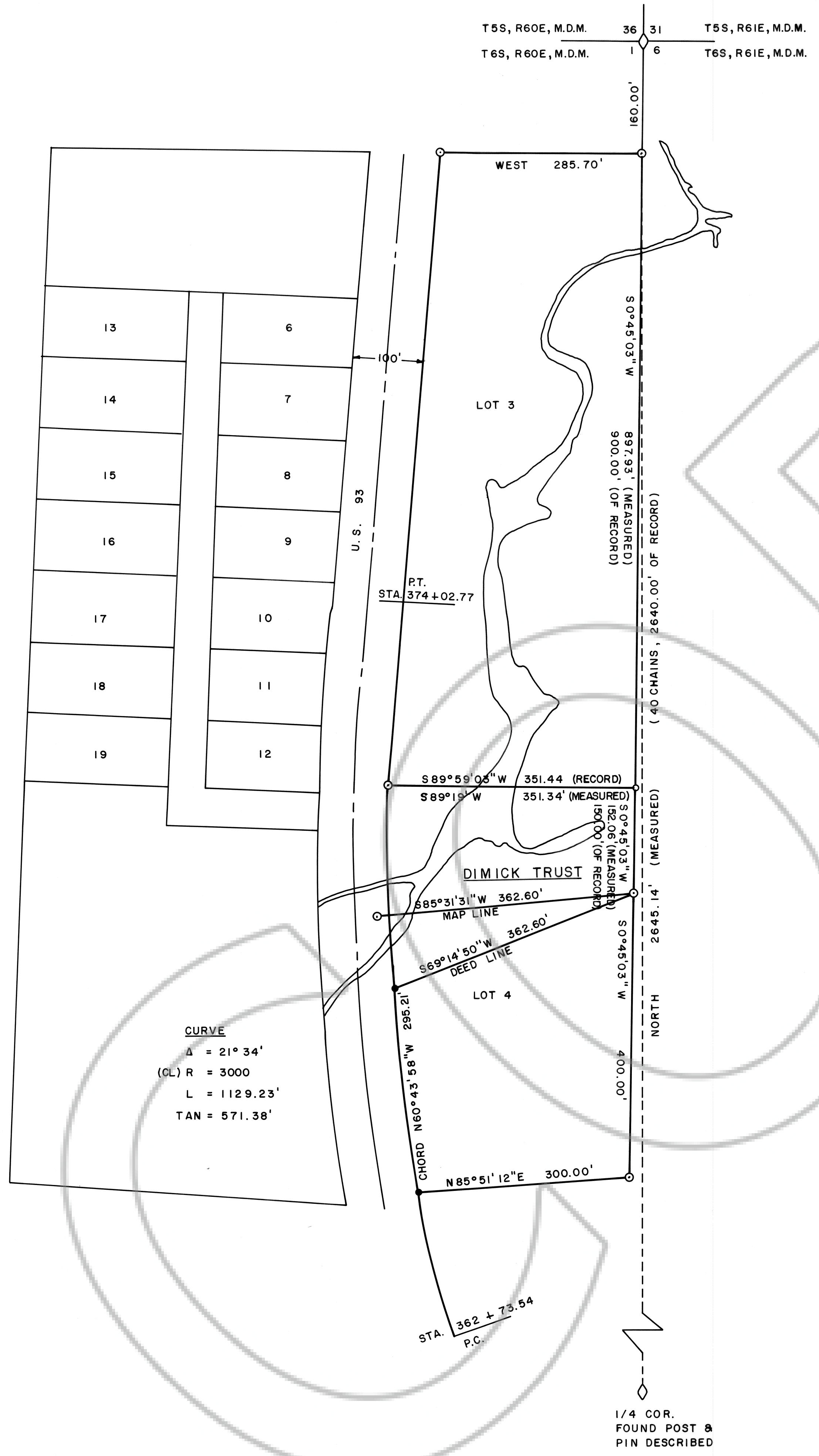
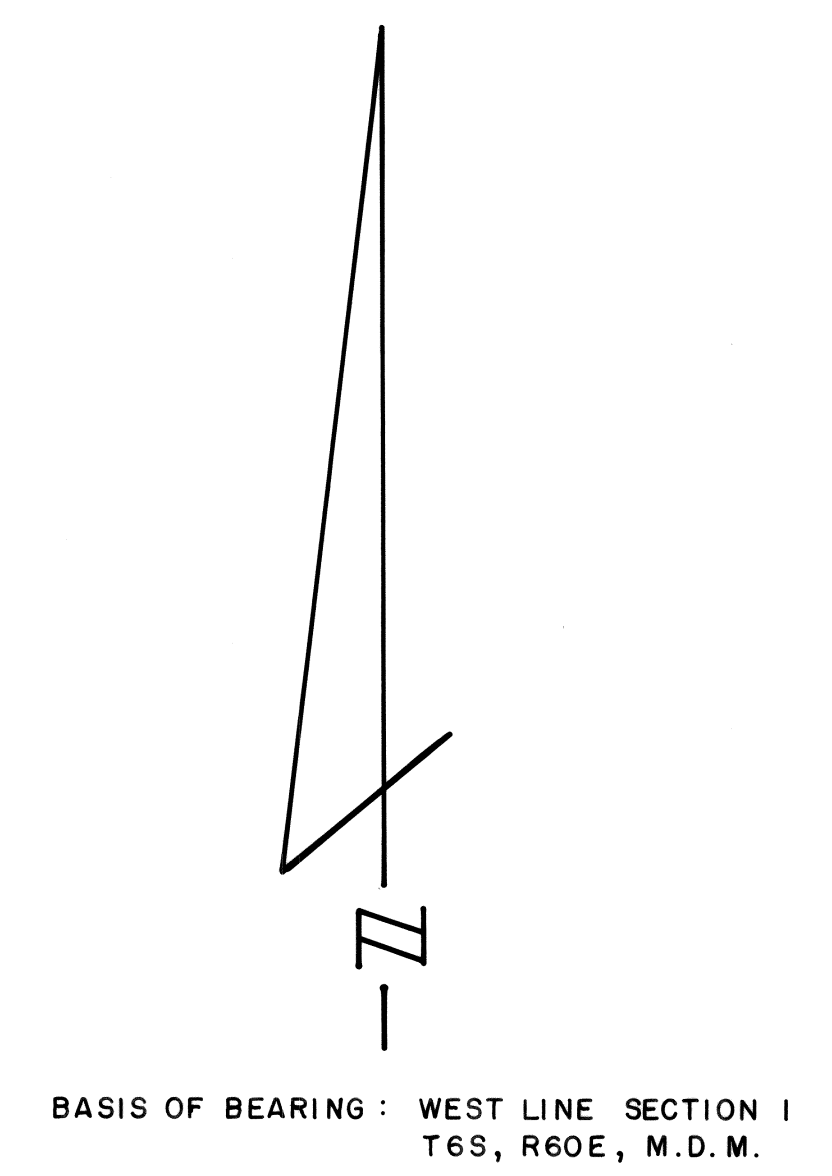
SURVEYOR'S STATEMENT

I, Frank C. Hulse, a Professional Land Surveyor within the State of Nevada, do hereby certify that this Record of Survey consisting of one sheet, correctly and accurately delineates a survey made by me at the request of the NATIONAL CREDIT UNION ADMINISTRATION. Survey is a retracement of survey recorded as Plat A of Page 74, Official Records, Lincoln County, Nevada. Survey is of a portion of the NE1/4 of the NE1/4 of Section 1, T6S, R60E, M.D.M. All monuments are of the character noted and occupy the positions shown hereon. This survey was completed on the 17th day of January, 1994, and conforms to the definitions and provisions of N. R. S. 625.340 thru 625.380, inclusive.



Frank C. Hulse P.L.S. 6498

NOTES:
Reference Ash Springs Subdivision Map
Plat A Page 74 Lincoln County Records



CURVE
Δ = 21° 34'
(CL) R = 3000
L = 1129.23'
TAN = 571.38'

- LEGEND
- SET PIN IN PAVEMENT P.L.S. 6498
 - SET 5/8" REBAR P.L.S. 6498
 - FOUND PIN IN PIPE RE 24

101741
Frank Hulse
April 21, 1994
P 15 PLATA 3
414
Yuriko Setzer
Sylvia Boucher, Deputy

RECORD OF SURVEY OF THE
NE1/4 OF THE NE1/4 SEC. 1, T6S,
R60E, M.D.M. PREPARED AT THE
INSTANCE OF THE NATIONAL
CREDIT UNION ADMINISTRATION.