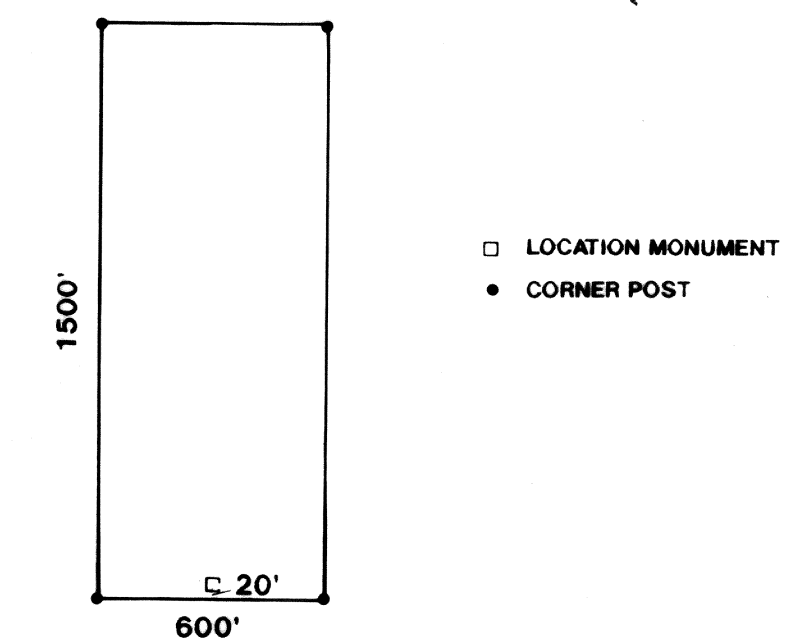


**CLAIM MAP FOR WB 1-6 LODE CLAIMS  
SECTION 36 T3N, R65E (UNSURVEYED)  
MOUNT DIABLO BASE AND MERIDIAN  
LINCOLN COUNTY, NEVADA**

LOCATOR: ASARCO INC.  
510 EAST PLUMB LANE  
RENO, NEVADA 89502

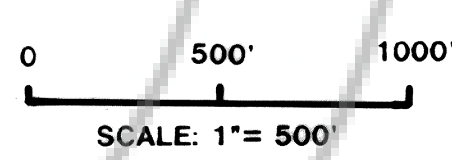
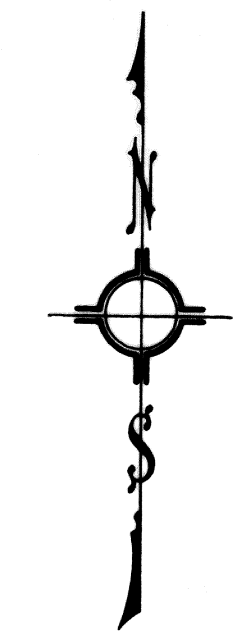
LOCATION DATE: 11/13/93

TYPICAL WB LODE CLAIM



There are five 2" x 2" wooden posts, 4½' long, set 1' in the ground. One post for the discovery monument and one for each of the four corners. All corners are identified 2, 3, 4, and 1 in a clockwise direction from the discovery monument, set 20' from the end line.

**ASARCO INCORPORATED  
510 EAST PLUMB LANE  
RENO, NEVADA 89502**



101223  
Asarco Incorporated  
December 9, 1993  
50 108 2  
P 115  
Yueiko Setzer  
Suzie Boucher, Deputy