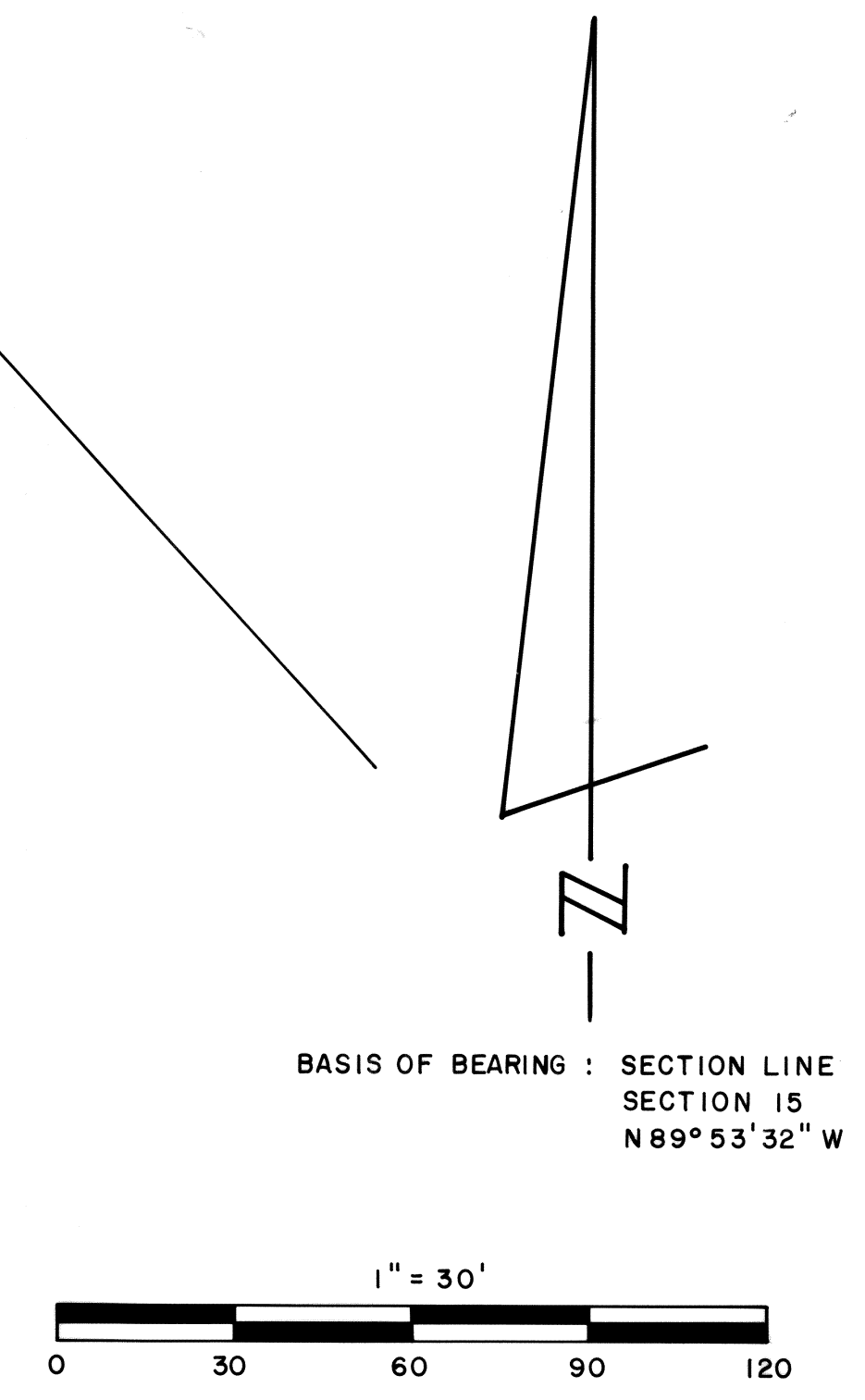
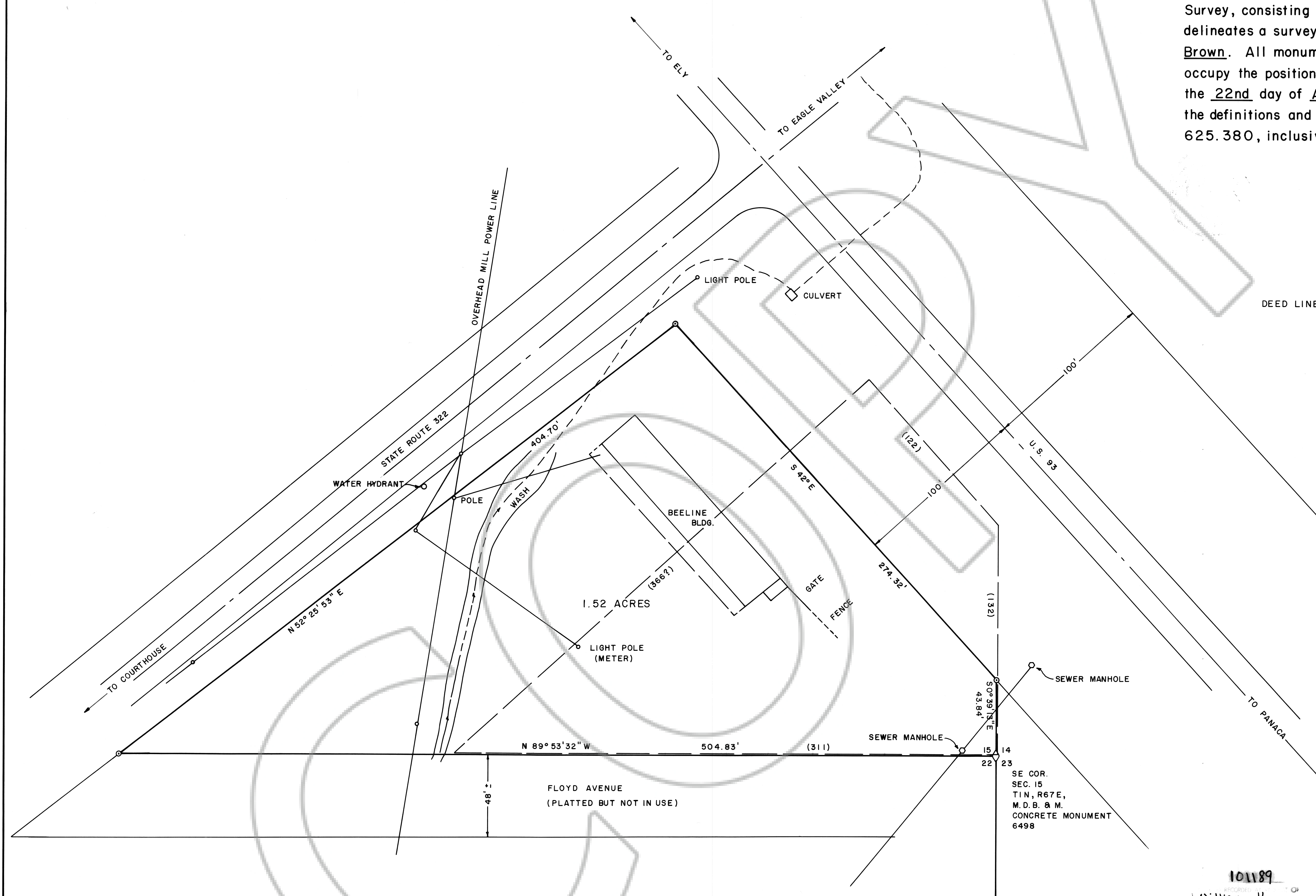
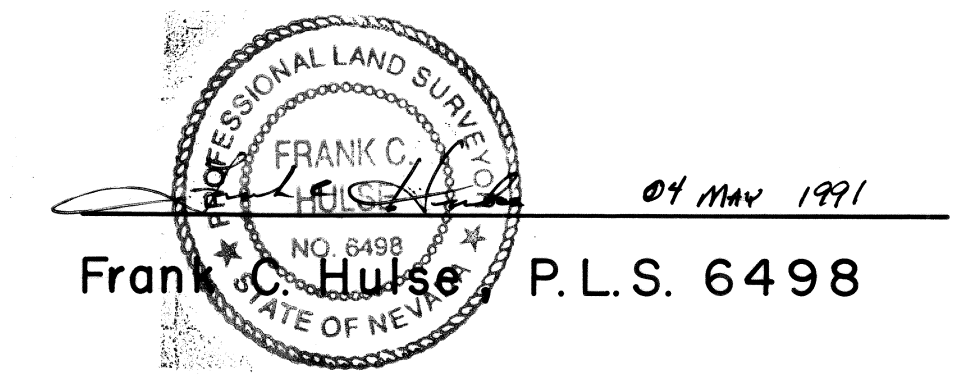


SURVEYOR'S STATEMENT

I, Frank C. Hulse, a Professional Land Surveyor within the State of Nevada, do hereby certify that this Record of Survey, consisting of one sheet, correctly and accurately delineates a survey made by me at the request of William H. Brown. All monuments are of the character noted and occupy the positions shown hereon. This survey was completed the 22nd day of April, 1991, and the survey conforms to the definitions and provisions of N.R.S. 625.340 through 625.380, inclusive.



101189
RECORDED BY
William Hogan
November 30, 1993
35
A Plat A
397
BY
Yuriko Setzer
Sylvia Boucher, Deputy

RECORD OF SURVEY MAP OF A PORTION OF THE SE 1/4 OF THE SE 1/4 OF SECTION 15, T1N, R67E, M.D.B. & M. PREPARED AT THE INSTANCE OF WILLIAM H. BROWN.