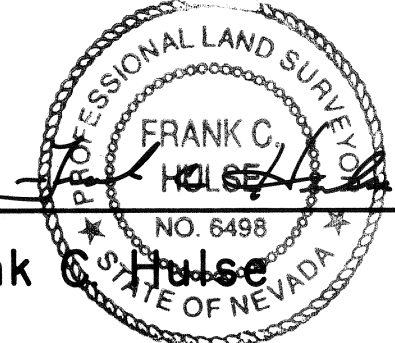
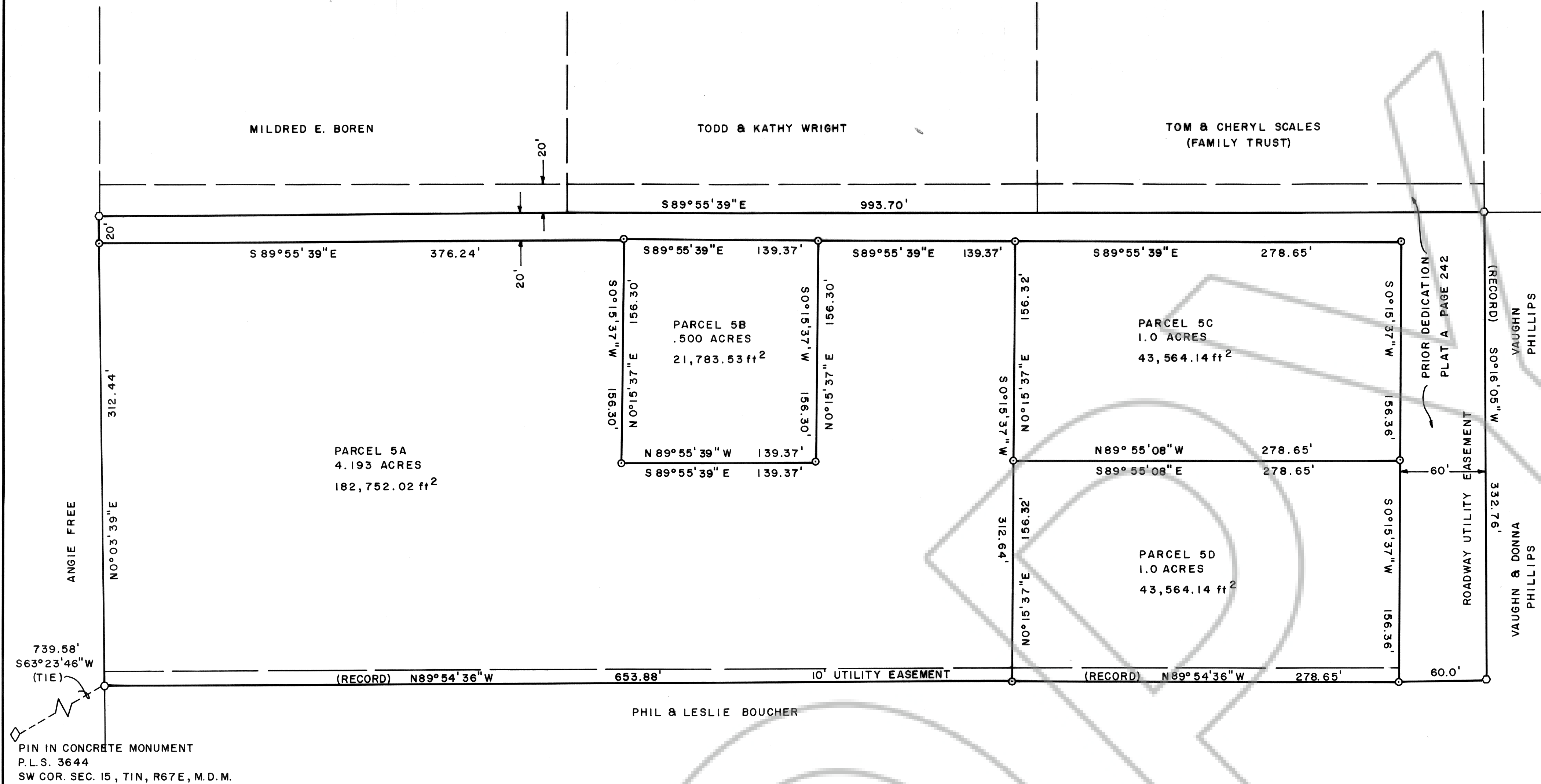


**SURVEYOR'S STATEMENT**

Frank C. Hulse states that he is a Professional Land Surveyor within the State of Nevada, and that this Parcel Map consisting of one sheet, accurately and completely delineates the survey made by him and completed on the 20th day of October, 1993. This map has been prepared at the instance of William D. Hogan and A. Corrine Hogan, owners. All monuments are of the character and occupy the positions shown hereon and are sufficient to enable the survey to be retraced. This survey conforms to the definitions and provisions of N.R.S. 278.471 thru 278.4725, inclusive.


  
 Frank C. Hulse P.L.S. 6498

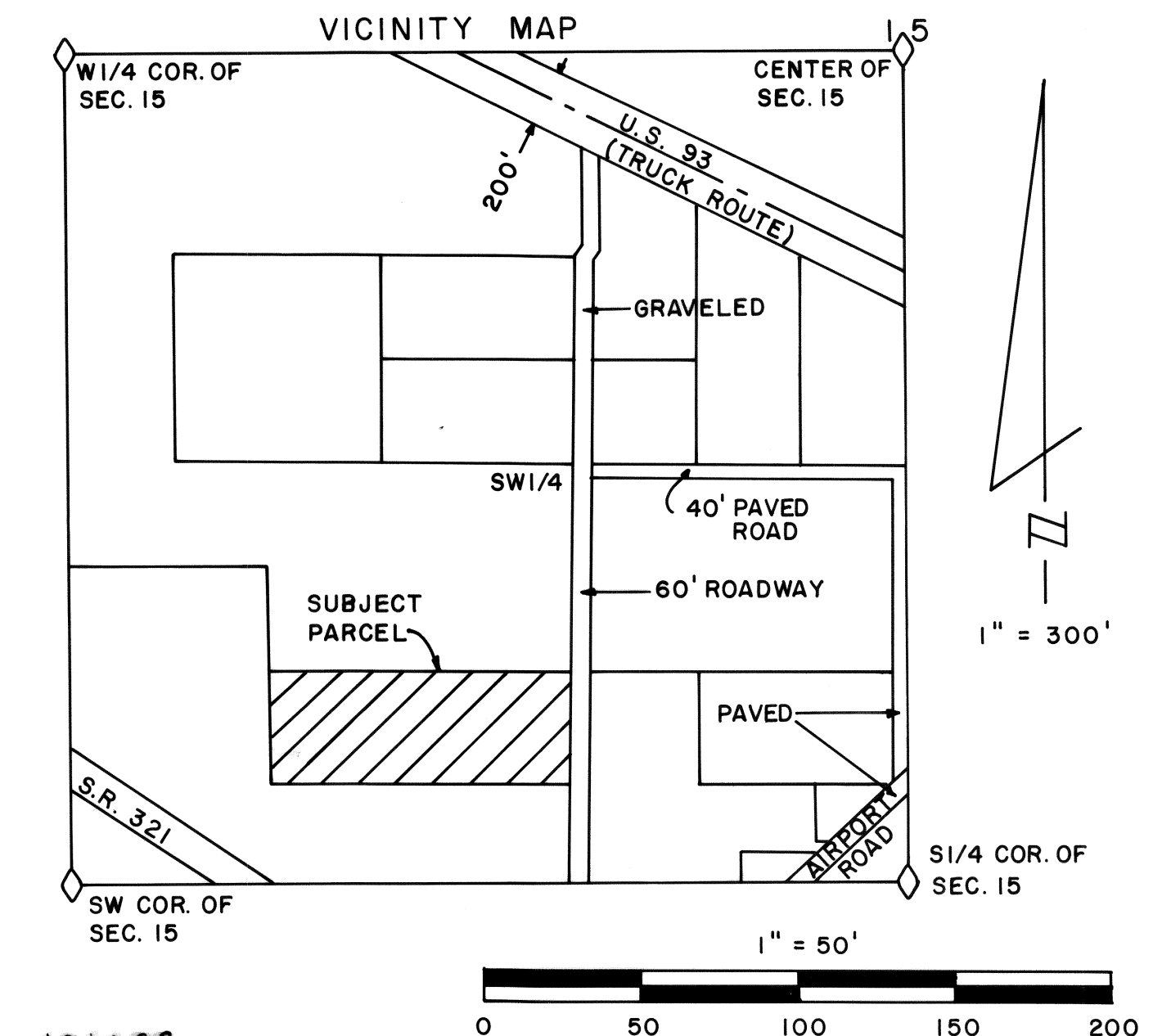


739.58' S63°23'46"W (TIE)  
 PIN IN CONCRETE MONUMENT  
 P.L.S. 3644  
 SW COR. SEC. 15, T1N, R67E, M.D.M.

**LEGEND:**

- ⊙ SET 5/8" REBAR - CAP P.L.S. 6498
- FOUND 5/8" REBAR

ASSESSOR'S PARCEL 01-191-26  
 ALL CORNERS 5/8" REBAR PLS 6498  
 REF. PLAT A PAGE 242 FOR  
 BASIS OF BEARING RE-PARCELLING  
 OF PARCEL 5



**OWNER'S CERTIFICATE**

We, William D. and A. Corrine Hogan, do hereby certify that we are the owners of the land shown hereon and that we consent to the preparation and recordation of this Parcel Map showing the land plotted into parcels and that it conforms to the provisions of N.R.S. 278.471 to 278.4725, inclusive. We also offer for dedication the roads and multiple use easements as shown hereon for public usage by Lincoln County, its heirs and assigns and to the various utility companies as necessary for their usage.

William D. Hogan  
 OWNERS  
 A. Corrine Hogan

**ACKNOWLEDGEMENT**

STATE OF NEVADA  
COUNTY OF LINCOLN ss

On this 22nd day of November, 1993, William D. and A. Corrine Hogan, appeared before me and acknowledged to me that they did approve and did execute the above instrument.

Margaret Conner  
 Notary Public



My commission expires July 13, 1996.

**APPROVALS**

Approved this 26th day of Oct, 1993, by the Pioche Town Board as a Parcel Map.

John Conder  
 Chairman

This is to certify that the Planning Commission in and for Lincoln County, Nevada, on this 9th day of November, 1993, did approve for the purposes of land division and accept in behalf of the public this map and any parcels of land offered for dedication for public use in conformity with the terms of the offer of dedication per Section 278 of the Nevada Revised Statutes.

Neil E. Washburn  
 Chairman

Approved this 22nd day of November, 1993, by the Lincoln County Commission as a Parcel Map.

Lloyd A. Rankin  
 Chairman

Attest: *Shirley Wilson*  
 Clerk

This parcel map has been reviewed by an agent surveyor and has been found acceptable as to its form and content.

Henry M. Buehler  
 Agent Surveyor P.L.S. 8754

PARCEL MAP OF A PORTION OF THE  
 SW 1/4 OF SECTION 15, T1N, R67E,  
 M.D.M. PREPARED AT THE INSTANCE  
 OF WILLIAM D. AND A. CORRINE  
 HOGAN.

FRANK C. HULSE/s.f. OCT. 1993