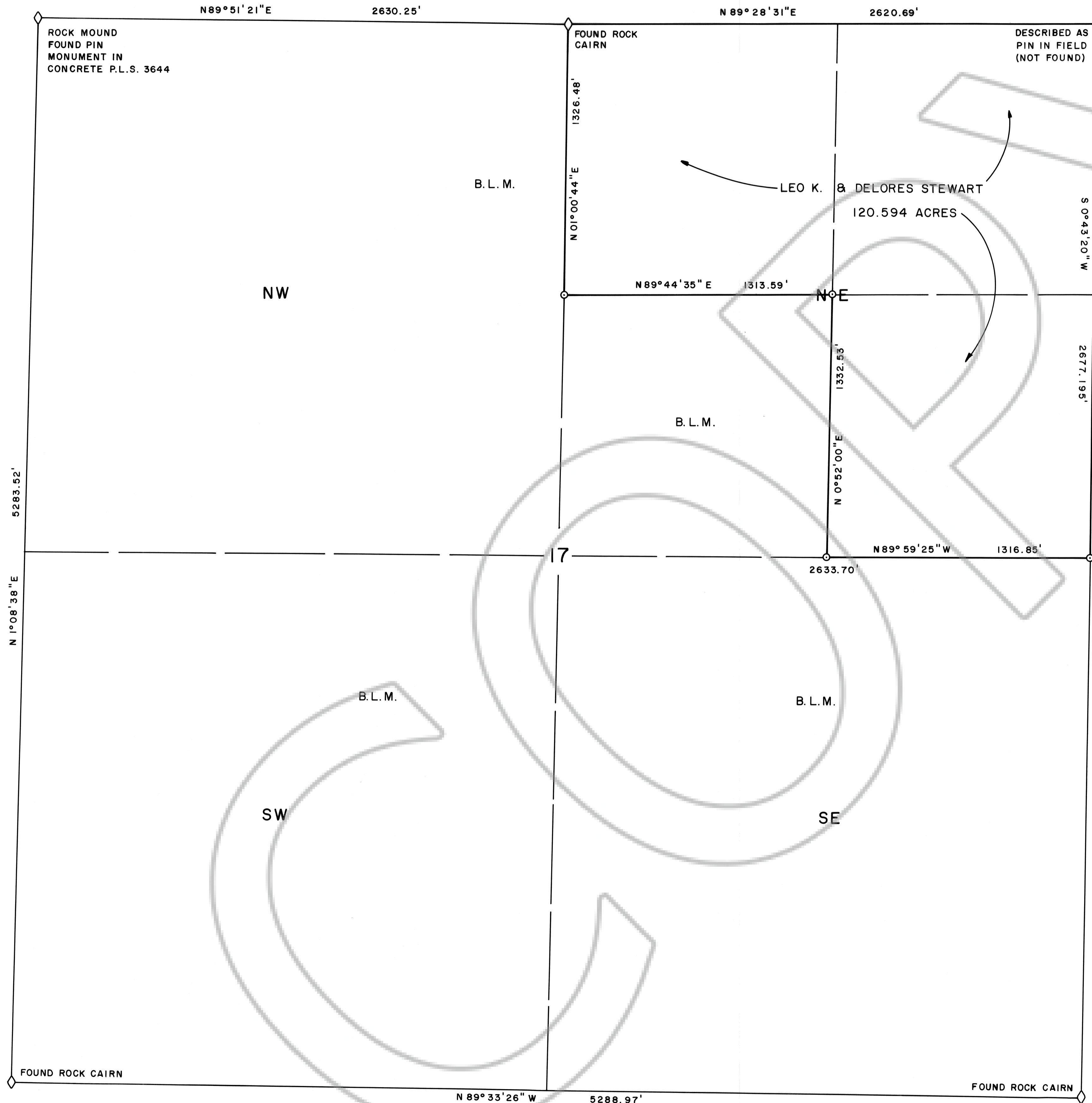
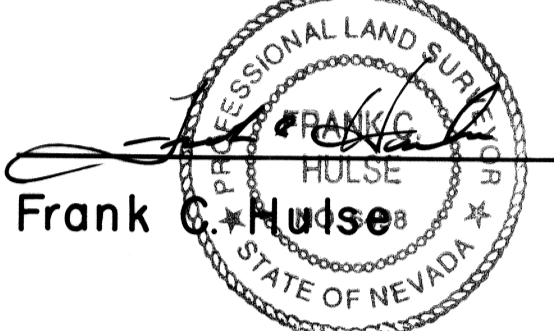


SURVEYOR'S STATEMENT

SECTION 17, T7S, R61E, M.D.M.

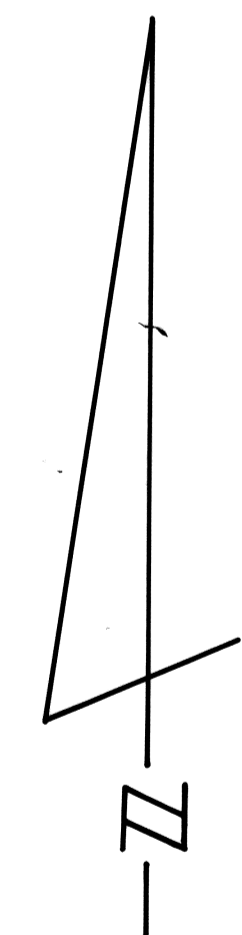
I, Frank C. Hulse, a Professional Land Surveyor within the State of Nevada, do hereby certify that this Record of Survey consisting of one sheet, correctly and accurately delineates a survey made by me at the request of LEO K. AND DELORES STEWART. Survey is a breakdown of Section 17, T7S, R61E, M.D.M. All monuments are of the character noted and occupy the positions shown hereon. This survey was completed on the 10th day of November, 1993, and conforms to the definitions and provisions of N.R.S. 625.340 thru 625.380, inclusive.



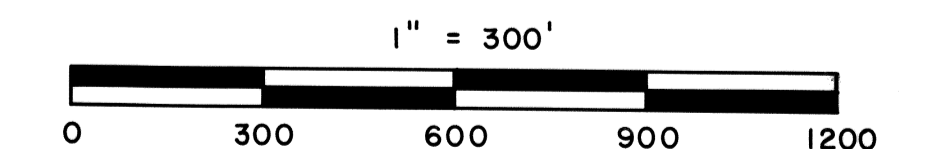

 Frank C. Hulse
 P.L.S. 6498

LEGEND:

⊙ SET 5/8" REBAR P.L.S. 6498



BASIS OF BEARING : NORTH LINE OF SECTION 16 PLAT A PAGE 133



101170
 RECORDED AT REQUEST OF
 Frank Hulse
 November 22, 1993
 04 MINUTE EAST 40
 PLAT A
 395
 Yuriko Setzer
 Leslie Bouche, Deputy

RECORD OF SURVEY OF SECTION 17, T7S, R61E, M.D.M. PREPARED AT THE INSTANCE OF LEO K. AND DELORES STEWART.