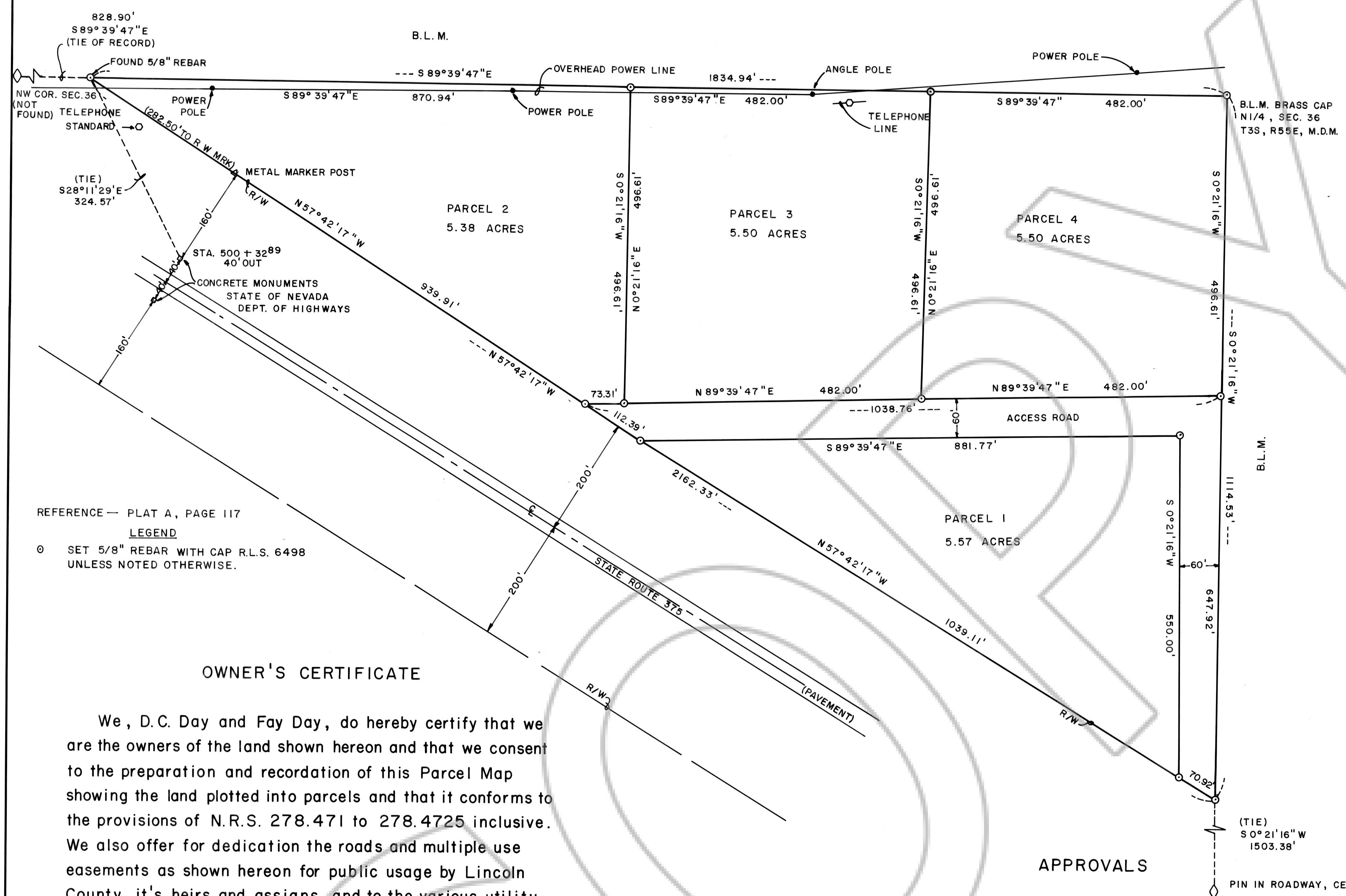


A PORTION OF THE N1/2 OF THE NW1/4 SECTION 36, T3S, R55E, M. D. M.

SURVEYOR'S CERTIFICATE

Frank C. Hulse states that he is a Professional Land Surveyor within the State of Nevada, and that this Parcel Map consisting of one sheet accurately and completely delineates a survey made by him and completed on the 25th day of May, 1993. That it has been prepared at the instance of D.C. Day and Fay Day, owners. All monuments are of the character indicated and occupy the positions shown hereon, and are sufficient to enable the survey to be retraced. This survey conforms with the definitions and provisions of the Nevada Revised Statutes 278.471 to 278.4725 inclusive.

Professional Land Surveyor  
Frank C. Hulse  
June 30<sup>th</sup>, 1993  
P.L.S. 6498



REFERENCE — PLAT A, PAGE 117  
LEGEND  
O SET 5/8" REBAR WITH CAP R.L.S. 6498 UNLESS NOTED OTHERWISE.

OWNER'S CERTIFICATE

We, D.C. Day and Fay Day, do hereby certify that we are the owners of the land shown hereon and that we consent to the preparation and recordation of this Parcel Map showing the land plotted into parcels and that it conforms to the provisions of N.R.S. 278.471 to 278.4725 inclusive. We also offer for dedication the roads and multiple use easements as shown hereon for public usage by Lincoln County, it's heirs and assigns, and to the various utility companies as necessary for their usage.

D. C. Day Owners Fay Day

ACKNOWLEDGEMENT

STATE OF NEVADA  
COUNTY OF LINCOLN ss  
On this 5 day of July, 1993, D.C. and Fay Day appeared before me, a Notary Public, and acknowledged to me that they did execute the above instrument.

Edith M. Grover  
Notary Public My commission expires Dec 22, 1996

APPROVALS

This is to certify that the Chairman of the Lincoln County Planning Commission, State of Nevada, did on this 5 day of Aug., 1993, did approve for purposes of land division and accept on behalf of the public this map and any parcels of land offered for dedication for public use in conformity with the terms of the offer of dedication per N. R.S. 278.010 thru 278.630.

Chairman

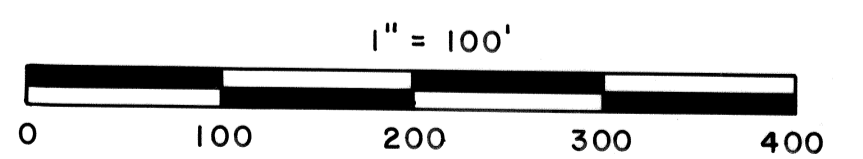
Approved this 5 day of Aug., 1993, by the Lincoln County Commission as a Parcel Map.

Chairman

ATTEST: Clerk

10720  
RECORDED AT REQUEST OF  
Frank Hulse  
August 6, 1993  
50 MINUTES PAST 2 O'CLOCK  
P.M. TO BOOK A OF PLATS  
RECORDS PAGE 387 OF LINCOLN  
COUNTY NEVADA  
Yuriko Setzer  
County Recorder  
Julia Brucher, Deputy

BASIS OF BEARING: PLAT A, PAGE 117  
NORTH LINE OF SEC. 36 BEARS  
S89°39'47" E FROM NW  
SEC. CORNER TO N1/4 CORNER



PARCEL MAP OF A PORTION OF THE  
N1/2 OF THE NW1/4 SECTION 36,  
T3S, R55E, M.D.M. PREPARED AT  
THE INSTANCE OF D.C. & FAY DAY.