

**SURVEYORS CERTIFICATE**

I, HENRY M. BULLOCH, A PROFESSIONAL LAND SURVEYOR REGISTERED IN THE STATE OF NEVADA, CERTIFY THAT THIS IS A TRUE AND ACCURATE REPRESENTATION OF LANDS SURVEYED UNDER MY SUPERVISION AT THE INSTANCE OF THE LINCOLN COUNTY COMMISSION. THIS PLAT COMPLIES WITH THE APPLICABLE STATE STATUTES AND ANY LOCAL ORDINANCES. THE MONUMENTS ARE OF THE CHARACTER SHOWN AND OCCUPY THE POSITIONS INDICATED.



*Henry M. Bulloch*  
 HENRY M. BULLOCH  
 NEVADA P.L.S. #8754

**GENERAL NOTES**

THE PURPOSE OF THIS SURVEY IS TO PREPARE A MAP OF THE TOWN OF PIOCHE AND TO ESTABLISH A SURVEY MONUMENT SYSTEM ON A SINGLE COORDINATE AND BEARING BASIS FOR ALL SURVEYORS TO USE FOR PIOCHE TOWNSITE SURVEYS.

THE OFFICIAL PIOCHE TOWNSITE MAP, ADOPTED JANUARY 5, 1874 AND ALL SUPPLEMENTAL PLATS, BLOCK REVISIONS, RECORDS OF SURVEYS, PARCEL MAPS OF PLAT "A" OF RECORDS AND OWNERSHIP PLATS WITHIN THE PIOCHE TOWNSITE WERE USED AS REFERENCE MATERIAL FOR THIS MAP.

THE ORIGINAL TOWNSITE MAP SHOWS ABSOLUTELY NO BEARINGS AND ONLY FRONT FOOTAGE LOT DIMENSIONS WITH MANY LOTS SHOWING NO DIMENSIONS AT ALL. MAKING RE-TRACEMENT OF THAT MAP VERY DIFFICULT. THE LAST SUPPLEMENTAL PLAT OR BLOCK REVISION WAS FILED IN 1958. SINCE THAT TIME ONLY TWO RECORD OF SURVEYS HAVE BEEN FILED WHICH ARE WITHIN THE ORIGINAL TOWNSITE MAP AREA. THEY SHOW A TIE TO THE NORTH EAST CORNER OF SECTION 22 BUT DO NOT SHOW HOW THEY RELATE TO THE REST OF THE BLOCK OR ADJACENT BLOCKS.

SINCE ONLY FRONT FOOTAGE DIMENSIONS WERE SHOWN ON THE ORIGINAL TOWNSITE MAP, IT WAS DETERMINED THAT E. SCHOPPMANN HAD ONLY A CHAIN AND NO INSTRUMENT TO MAKE HIS MAP, THEREFORE HIS FIELD DIMENSIONS WERE HELD WHENEVER POSSIBLE TO MAKE THIS MAP. MANY LOT DIMENSIONS AND STREET WIDTHS HAD TO BE SCALED DUE TO THE LACK OF INFORMATION. MANY OCCUPIED LOT LINES AND STREETS DO NOT MATCH PLATTED LOT AND STREET LINES DUE TO LACK OF INFORMATION IN THE PAST. THE PURPOSE OF THIS MAP OF SURVEY IS TO IDENTIFY THESE PROBLEMS AND CREATE A SINGLE MAPPING BASE SO THE PROBLEM AREAS CAN BE ADDRESSED AND FUTURE PROBLEMS AVOIDED.

# MAP OF SURVEY OF THE TOWN OF PIOCHE LINCOLN COUNTY, NEVADA

NO. 100051  
 FILED AT THE REQUEST OF  
Lincoln County Commission  
 DATE: 03-10-1993 AT: 9:01  
 PLAT: A PAGE: 382  
 "OF PARCEL MAPS"  
 OFFICIAL RECORDS BOOK Plat A  
 LINCOLN COUNTY, NEVADA RECORDS  
 FEE & DEPUTY: Gulib...

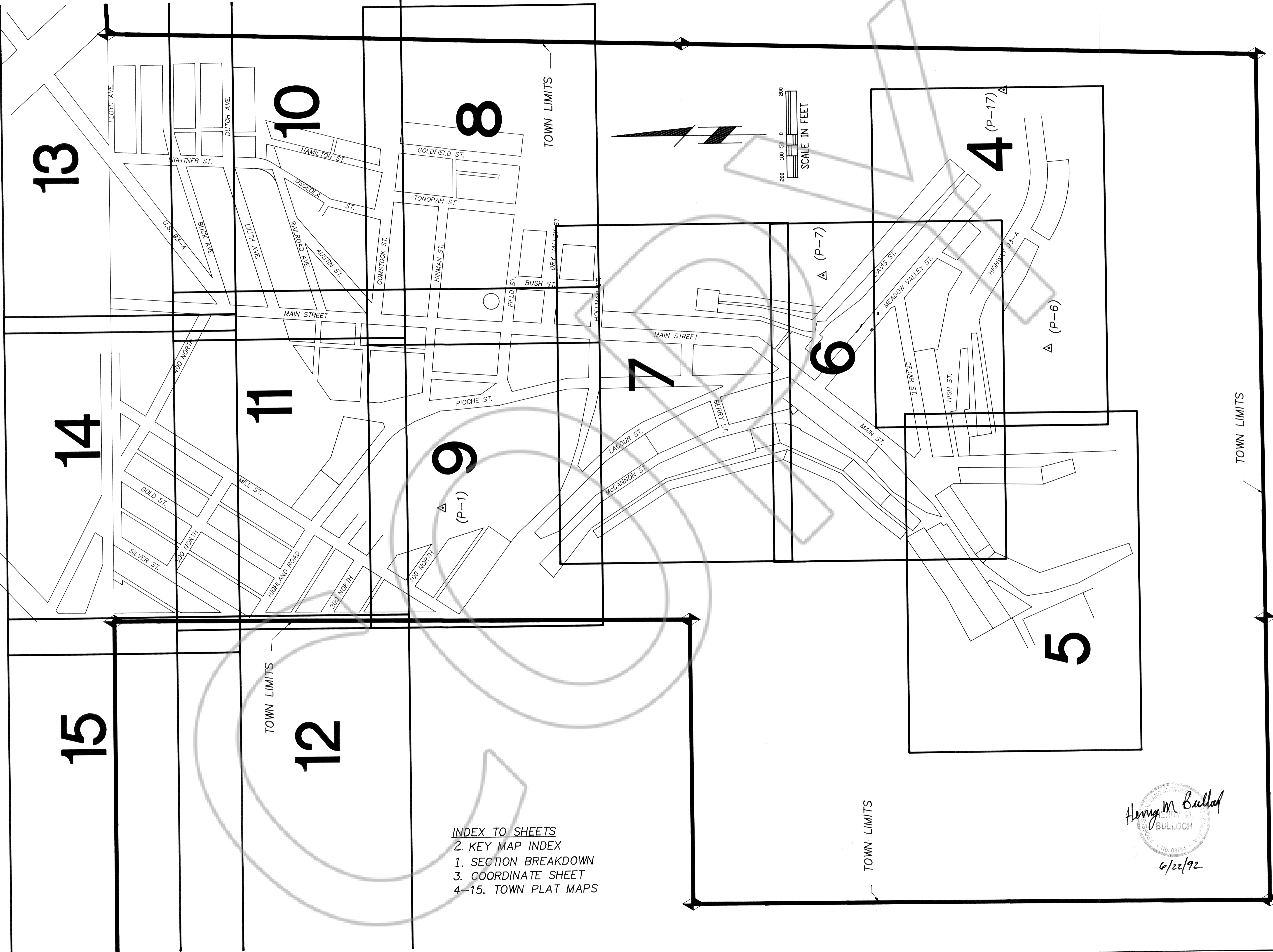
**BULLOCH BROTHERS ENGINEERING INC.**  
 CIVIL ENGINEERS—LAND SURVEYORS—LAND PLANNERS—ARCHITECTS  
 P.O. BOX 1405 CEDAR CITY, UTAH 84720 (801)566-9592  
 2 WEST ST. GEORGE BLVD. ST. GEORGE, UTAH 84770 (801)668-4700  
 P.O. BOX 925 MESQUITE, NEVADA 89024 (702)346-5101

DATE: 6-11-92  
 SCALE: 1" = 500'  
 CHECKED: MB/JCN  
 DRAWN: JDS

**B**

TOWN OF PIOCHE  
 TOWN PLAT  
 RE-SURVEY  
 PIOCHE, NEVADA

SHEET NO. 2 OF 15  
 FILE NO. 9483



INDEX TO SHEETS  
 2. KEY MAP INDEX  
 1. SECTION BREAKDOWN  
 3. COORDINATE SHEET  
 4-15. TOWN PLAT MAPS

*Henry M. Bulloch*  
 BULLOCH  
 No. 08753  
 6/22/92

SHEET NO. 2 OF 15 FILE NO. 9-483	TOWN OF PIOCHE TOWN PLAT RE-SURVEY	NEVADA	PICHE,		BULLOCH BROTHERS ENGINEERING INC. CIVIL ENGINEERS—LAND SURVEYORS—LAND PLANNERS—ARCHITECTS P.O. BOX 925 CEDAR CITY, UTAH 84720 ST. GEORGE, UTAH 84770 MESQUITE, NEVADA 89024 (801)566-9592 (801)568-4700	DATE: 12-31-91	SCALE: 1" = 50'
						CHECKED: MB/JCN	DRAWN: W/DJS

PRIMARY CONTROL POINTS			
POINT NO.	COORDINATE	DESCRIPTION	MONUMENTATION
P-1	N 5982.7320 E 5239.2570		P.K. NAIL & B.B.E. SHINER IN ROCK OUTCROP
P-2	N 1598.2140 E 6241.2320		* 1" SQUARE PIN
P-3	N 5739.1646 E 8204.9921		REBAR
P-4	N 403.4310 E 2722.3560		REBAR
P-5	N 2709.1094 E 7185.6115		REBAR
P-6	N 3178.2630 E 5939.9200		REBAR
P-7	N 4212.0850 E 6289.4010		REBAR
P-8	N -991.3240 E 13332.2801		REBAR
P-9	N 3352.1180 E 4749.2160		REBAR
P-10	N 3283.6490 E 7130.2160		REBAR
P-11	N 5167.7630 E 4931.1390		REBAR
P-12	N 4009.6700 E 5181.2070		REBAR
P-13	N 7910.6030 E 6676.0440		NAIL
P-14	N 9990.8260 E 10004.3320		REBAR & B.B.E. PLASTIC CAP

G.L.O. LAND NET SECTION COORDINATES			
POINT NO.	COORDINATE	DESCRIPTION	MONUMENTATION
(20)	N 7501.3710 E 7447.9430	SECTION CORNER, SECTIONS 14, 15, 22 & 23	* BRASS CAP IN CONCRETE L.S. #3644
(21)	N 7506.4810 E 4731.2780	1/4 CORNER BETWEEN SECTIONS 15 & 22	* BRASS CAP IN CONCRETE L.S. #3644
(22)	N 7511.1770 E 2087.3060	SECTION CORNER, SECTIONS 15, 16, 21 & 22	* BRASS CAP IN CONCRETE L.S. #3644
(23)	N 7641.7730 E 9972.3960	1/4 CORNER BETWEEN SECTIONS 14 & 23	* BRASS CAP IN CONCRETE L.S. #3644
(24)	N 10175.3856 E 4752.6282	CENTER OF SECTION 15	* BRASS CAP IN CONCRETE L.S. #3644
(25)	N 7598.7280 E 12665.0700	SECTION CORNER, SECTIONS 13, 14, 23 & 24	* BRASS CAP IN CONCRETE L.S. #3644
(26)	N 12898.2080 E 12650.7470	SECTION CORNER, SECTIONS 11, 12, 13 & 14	* REBAR AND ALUMINUM CAP L.S. #4235
(27)	N 10212.9160 E 9995.3980	CENTER OF SECTION 14	* BRASS CAP IN CONCRETE L.S. #3644
(28)	N 12876.9810 E 10018.7020	1/4 CORNER BETWEEN SECTIONS 11 & 14	* BRASS CAP IN CONCRETE L.S. #3644
(29)	N 10249.6780 E 12658.0430	1/4 CORNER BETWEEN SECTIONS 14 & 13	* SPIKE IN HIGHWAY
(30)	N 12855.1560 E 7387.1130	SECTION CORNER, SECTIONS 10, 11, 14 & 15	* BRASS CAP IN CONCRETE IN MOUND OF ROCK L.S. #3644
(31)	N 12833.8390 E 4735.7000	1/4 CORNER BETWEEN SECTIONS 10 & 15	* REBAR IN MOUND OF ROCK
(32)	N 10170.0610 E 2085.4480	1/4 CORNER BETWEEN SECTIONS 15 & 16	* BRASS CAP IN CONCRETE L.S. #3644
(33)	N 4853.8400 E 7368.2210	1/4 CORNER BETWEEN SECTIONS 22 & 23	* BRASS CAP IN CONCRETE L.S. #3644
(34)	N 2205.4190 E 7286.4510	SECTION CORNER, SECTIONS 22, 23, 26 & 27	* "X" ON ROCK
(35)	N 2188.4460 E 2079.2520	SECTION CORNER, SECTIONS 21, 22, 27 & 28	* NOTCHED ROCK, SET SPIKE ALONGSIDE
(36)	N 2196.9325 E 4682.8516	1/4 CORNER BETWEEN SECTIONS 22 & 27	SET REBAR, FOUND LOOSE ROCK SLID DOWNHILL
(37)	N 4849.8115 E 2083.2790	1/4 CORNER BETWEEN SECTIONS 21 & 22	RE-ESTABLISHED NO POINT SET
(38)	N 4851.8115 E 4707.0657	CENTER OF SECTION 22	* BRASS CAP IN CONCRETE L.S. #3644
(39)	N 4850.8115 E 3395.1724	CENTER WEST 1/16 CORNER SECTION 22	* BRASS CAP IN CONCRETE L.S. #3644
(40)	N 2192.6893 E 3381.0518	WEST 1/16 CORNER BETWEEN SECTIONS 22 & 27	* BRASS CAP IN CONCRETE L.S. #3644
(41)	N 10178.3590 E 7417.6520	1/4 CORNER BETWEEN SECTIONS 14 & 15	* REBAR

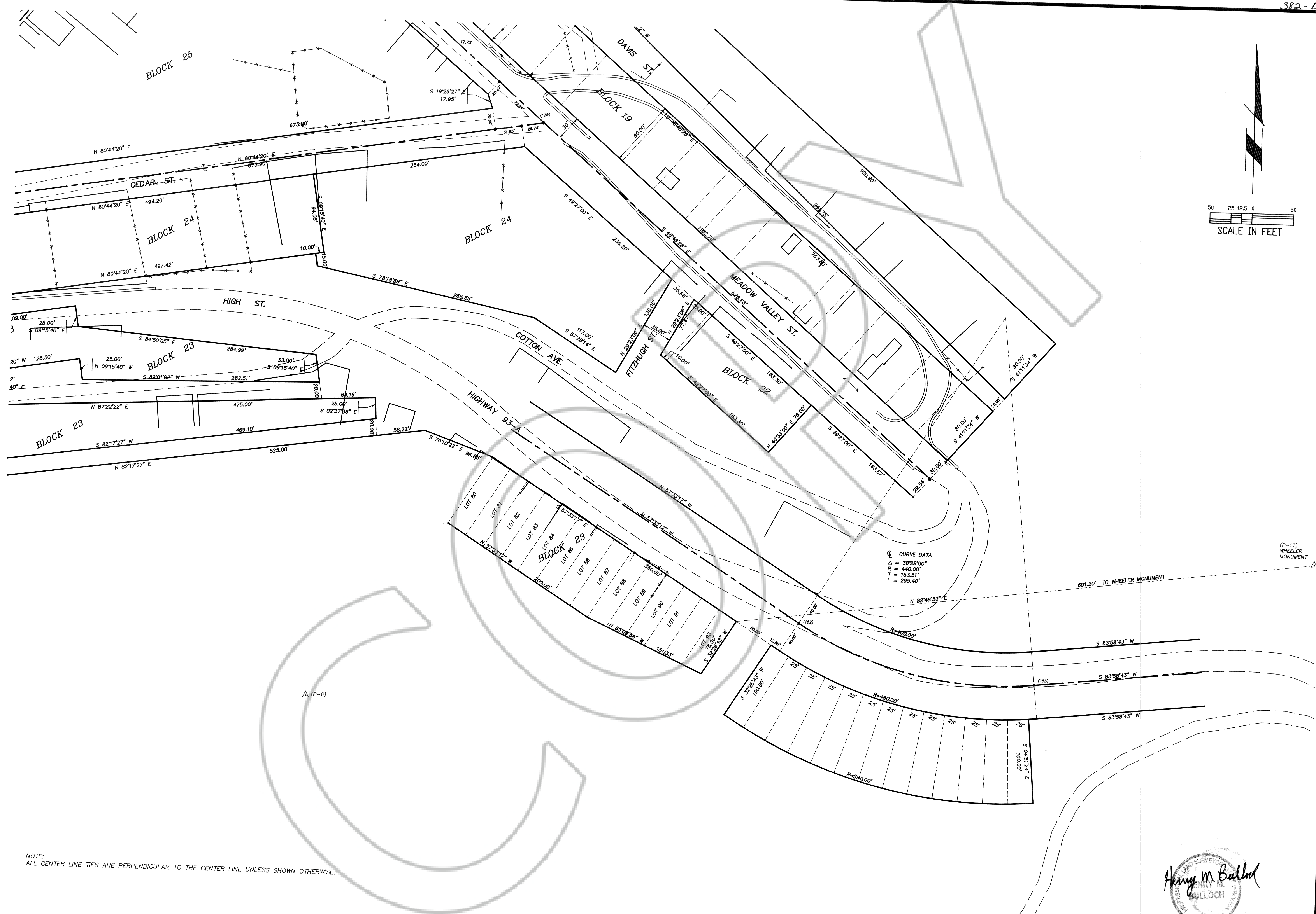
NOTE: \* INDICATES EXISTING MONUMENT FOUND

STREET CENTERLINE INTERSECTIONS			
POINT NO.	COORDINATE	DESCRIPTION	MONUMENTATION
100	N 7503.9674 E 6877.3416	ROAD TO U.S. 93 & LIGHTNER ST.	SPIKE & B.B.E. SHINER
101	N 7194.9723 E 6860.8474	BUCK AVE. & LIGHTNER ST.	
102	N 7177.5938 E 6869.9198	BUCK AVE. & LIGHTNER ST.	
103	N 7225.8949 E 7004.7737	ANGLE POINT IN BUCK AVE.	
104	N 6956.6658 E 6848.1266	LILITH AVE. & LIGHTNER ST.	
105	N 6951.1896 E 6847.8343	LIGHTNER ST. & DUTCH AVE.	
106	N 6771.7219 E 6838.2543	OSCEOLA ST. & LIGHTNER ST.	REBAR & B.B.E. PLASTIC CAP
107	N 6728.4904 E 6810.7040	RAILROAD AVE. & OSCEOLA ST.	P.K. NAIL & B.B.E. SHINER
108	N 6654.5287 E 6567.9445	AUSTIN ST. & RAILROAD AVE.	
109	N 6488.2914 E 6657.6312	ANGLE POINT IN OSCEOLA ST.	
110	N 6521.5075 E 6131.3382	MAIN ST. & RAILROAD AVE.	P.K. NAIL & B.B.E. SHINER
111	N 6280.9970 E 6129.0462	AUSTIN ST. & COMSTOCK ST.	
112	N 6282.8718 E 6113.7771	MAIN ST. & COMSTOCK ST.	SPIKE & B.B.E. SHINER
113	N 6743.2530 E 6147.6564	MAIN ST. & LILITH AVE.	
114	N 6957.6091 E 6163.4307	MAIN ST. & ROAD TO U.S. 93	
115	N 6965.5725 E 6164.0167	BUCK AVE. & MAIN ST.	
116	N 6185.6710 E 6905.4141	COMSTOCK ST. & GOLDFIELD ST.	
117	N 6199.3309 E 6794.1629	COMSTOCK ST. & HAMILTON ST.	
118	N 6213.0297 E 6682.5957	TONOPAH ST. & COMSTOCK ST.	
119	N 6224.1346 E 6592.1530	OSCEOLA ST. & COMSTOCK ST.	
120	N 5579.0806 E 6834.1412	FIELD ST. & GOLDFIELD ST.	
121	N 5958.6967 E 6652.7120	HINMAN ST. & TONOPAH ST.	REBAR & B.B.E. PLASTIC CAP
122	N 6023.3241 E 6094.6772	MAIN ST. & HINMAN ST.	SPIKE & B.B.E. SHINER
123	N 5807.7382 E 6611.4749	FIELD ST. & TONOPAH ST.	
124	N 5877.5263 E 6069.2301	MAIN ST. & FIELD ST.	
125	N 5630.7105 E 6277.5855	FIELD ST. & BUSH ST.	
126	N 5492.4287 E 6054.6947	MAIN ST. & DRY VALLEY ST.	
127	N 5476.8778 E 6263.9351	DRY VALLEY ST. & BUSH ST.	
128	N 5465.6124 E 6263.0504	DRY VALLEY ST. & BUSH ST.	
129	N 5268.5389 E 6037.1130	MAIN ST. & HOFFMAN ST.	SPIKE & B.B.E. SHINER
130	N 5252.9083 E 6246.3476	HOFFMAN ST. & BUSH ST.	
131	N 4537.0527 E 5989.5606	ANGLE POINT MAIN ST.	SPIKE & B.B.E. SHINER
132	N 4255.5002 E 5763.8690	MEADOW VALLEY ST. & MAIN ST.	SPIKE & B.B.E. SHINER
133	N 3905.2019 E 5402.9113	MAIN ST. & CEDAR ST.	SPIKE & B.B.E. SHINER
134	N 3750.2864 E 5470.3163	ANGLE POINT CEDAR ST.	
135	N 3869.9786 E 6204.3568	MEADOW VALLEY ST. & CEDAR ST.	REBAR & B.B.E. PLASTIC CAP
136	N 7504.5631 E 5750.8733	MILL ST & SECTION LINE	
137	N 6585.0014 E 5153.5699	HIGHLAND ROAD & MILL ST.	
138	N 6729.8981 E 4930.4982	HIGHLAND ROAD & GOLD ST.	
139	N 6962.3782 E 5398.6959	300 NORTH & MILL ST.	
140	N 7339.7550 E 5643.8218	MILL ST. & 400 NORTH	
141	N 7107.2749 E 5175.6242	300 NORTH & GOLD ST.	
142	N 7252.1716 E 4952.5526	SILVER ST. & 300 NORTH	

STREET CENTERLINE INTERSECTIONS			
POINT NO.	COORDINATE	DESCRIPTION	MONUMENTATION
143	N 7484.6517 E 5420.7502	GOLD ST. & 400 NORTH	
144	N 7505.2437 E 5389.0485	SECTION LINE & 400 NORTH	
145	N 6903.0424 E 4725.7749	SILVER ST. & SECTION LINE	
146	N 7505.7549 E 5117.2682	SILVER ST. & SECTION LINE	
147	N 6863.1132 E 4725.4107	HIGHLAND ROAD & SECTION LINE	
148	N 6361.9298 E 5008.6732	200 NORTH & MILL ST.	
149	N 6547.7914 E 4722.5351	200 NORTH & SECTION LINE	
150	N 5912.4946 E 4716.7415	MILL ST. & SECTION LINE	
151	N 5271.7677 E 6037.3665	HOFFMAN ST & MAIN ST.	
152	N 3281.3307 E 6523.9619	P.T. HIGHWAY 93-A	
153	N 3215.0767 E 6806.1752	P.C. HIGHWAY 93-A	
154	N 6152.2176 E 4872.4541	MILL ST. & 100 NORTH	
155	N 7505.2949 E 5361.8465	400 NORTH & SECTION LINE	
156	N 7829.7135 E 4733.8637	400 NORTH & SECTION LINE	
157	N 7503.7116 E 6203.6181	MAIN ST. & SECTION LINE	
158	N 6260.2803 E 5555.0086	ANGLE POINT HIGHLAND ROAD	
159	N 6230.2555 E 5588.2402	ANGLE POINT HIGHLAND ROAD	
160	N 6185.6648 E 5622.7690	ANGLE POINT HIGHLAND ROAD	
161	N 7053.5001 E 6170.4873	400 NORTH & MAIN ST.	
162	N 6118.3379 E 5661.2013	ANGLE POINT PIOCHE ST.	
163	N 5992.2947 E 5711.0866	ANGLE POINT PIOCHE ST.	
164	N 5719.3459 E 5734.3290	ANGLE POINT PIOCHE ST.	
165	N 5711.1138 E 5736.2028	PIOCHE ST. & FIELD ST.	
166	N 5406.3916 E 5805.5627	ANGLE POINT PIOCHE ST.	
167	N 5277.8079 E 5806.6998	PIOCHE ST. & HOFFMAN ST.	
168	N 5899.3761 E 4716.6218	LACOUR ST. & SECTION LINE	
169	N 5622.4175 E 5092.7799	ANGLE POINT LACOUR ST.	
170	N 5268.7843 E 5269.3816	ANGLE POINT McCANNON ST.	
171	N 5244.9960 E 5464.4737	ANGLE POINT LACOUR ST.	
172	N 4851.6962 E 5810.4680	PIOCHE ST. & EUGENIE ST.	
173	N 5012.6586 E 5620.7155	ANGLE POINT LACOUR ST.	
174	N 4984.7482 E 5453.0683	ANGLE POINT McCANNON ST.	
175	N 4725.4702 E 5743.4865	BERRY ST. & LACOUR ST.	
176	N 4702.8916 E 5572.8932	ANGLE POINT McCANNON ST.	
177	N 4676.2256 E 5579.5393	McCANNON ST. & BERRY ST.	
178	N 4860.1187 E 5771.4238	ANGLE POINT LACOUR ST.	
179	N 4510.5027 E 5813.4852	LACOUR ST. & PIOCHE ST.	
180	N 4367.5367 E 5853.6771	LACOUR ST. & MAIN ST.	
181	N 4844.5442 E 6009.5500	EUGENIE ST. & MAIN ST.	
182	N 3838.9572 E 5429.9695	MAIN ST. & MAIN ST.	
183	N 3507.1296 E 4939.8899	ANGLE POINT MAIN ST.	
184	N 3542.4603 E 4983.3298	ANGLE POINT MAIN ST.	
185	N 3321.2995 E 4795.4975	ANGLE POINT MAIN ST.	
186	N 3295.6003 E 4782.2910	ANGLE POINT MAIN ST.	
187	N 3185.3548 E 4798.7618	ANGLE POINT MAIN ST.	
188	N 3050.1895 E 4840.4021	ANGLE POINT MAIN ST.	
189	N 2798.2835 E 4973.3424	END MAIN ST.	

Henry M. Bulloch  
BULLOCH  
6/22/92

DATE: 12-31-91  
CHECKED: MB/JCN  
SCALE: JDS  
DRAWN: JDS  
BULLOCH BROTHERS ENGINEERING INC.  
CIVIL ENGINEERS—LAND SURVEYORS—LAND PLANNERS—ARCHITECTS  
P.O. BOX 925  
CEDAR CITY, UTAH 84720  
MESQUITE, NEVADA 89024  
(801)566-9592  
NEVADA  
TOWN OF PIOCHE  
TOWN PLAT  
RE-SURVEY  
PIOCHE,  
FILE NO. 9-483  
3 OF 15  
SECRET NO.



50 25 12.5 0 50  
SCALE IN FEET

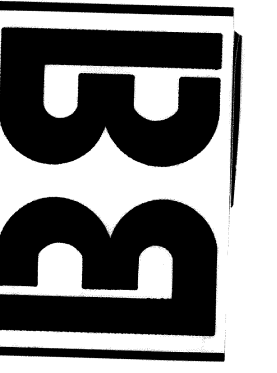
Q CURVE DATA  
 $\Delta = 38^{\circ}28'00''$   
 $R = 440.00'$   
 $T = 153.91'$   
 $L = 295.40'$

Harry M. Bulloch  
 PROFESSIONAL LAND SURVEYOR  
 No. 08754  
 6/22/92

DATE: 12-31-91  
 CHECKED: MB/JCN

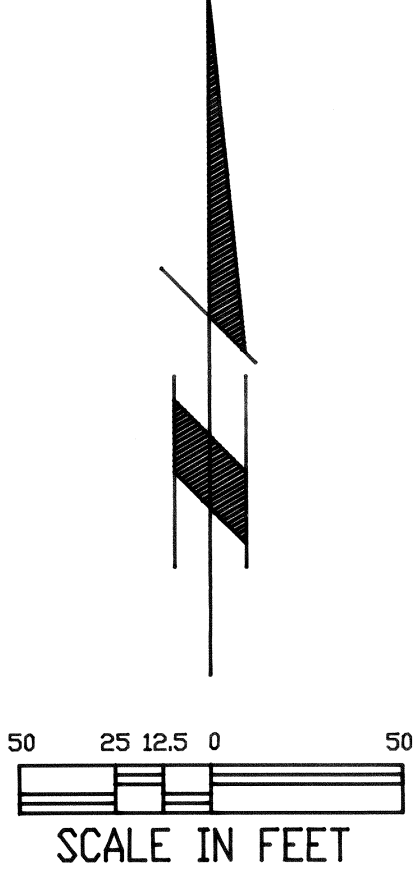
SCALE: 1" = 50'  
 DRAWN: W.D./JDS

**BULLOCH BROTHERS ENGINEERING INC.**  
 CIVIL ENGINEERS—LAND SURVEYORS—LAND PLANNERS—ARCHITECTS  
 P.O. BOX 1405 CEDAR CITY, UTAH 84720  
 P.O. BOX 985 MESQUITE, NEVADA 89054  
 ST. GEORGE, UTAH 84770  
 (801)566-9592 (801)668-4700

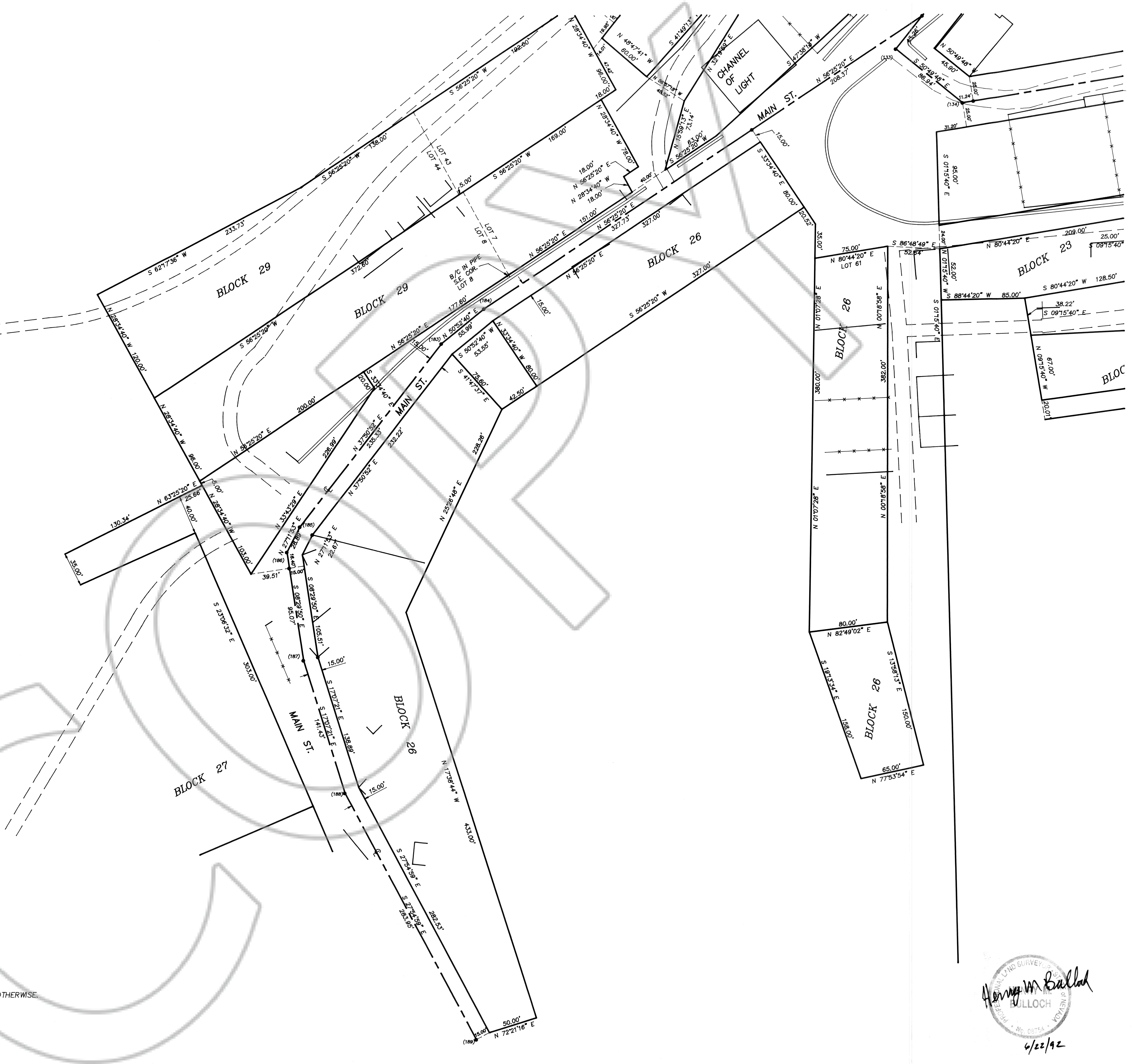


TOWN OF PIOCHE  
 TOWN PLAT  
 RE-SURVEY  
 PICHE,  
 NEVADA

SHEET NO. 4 OF 15  
 FILE NO. 9-483



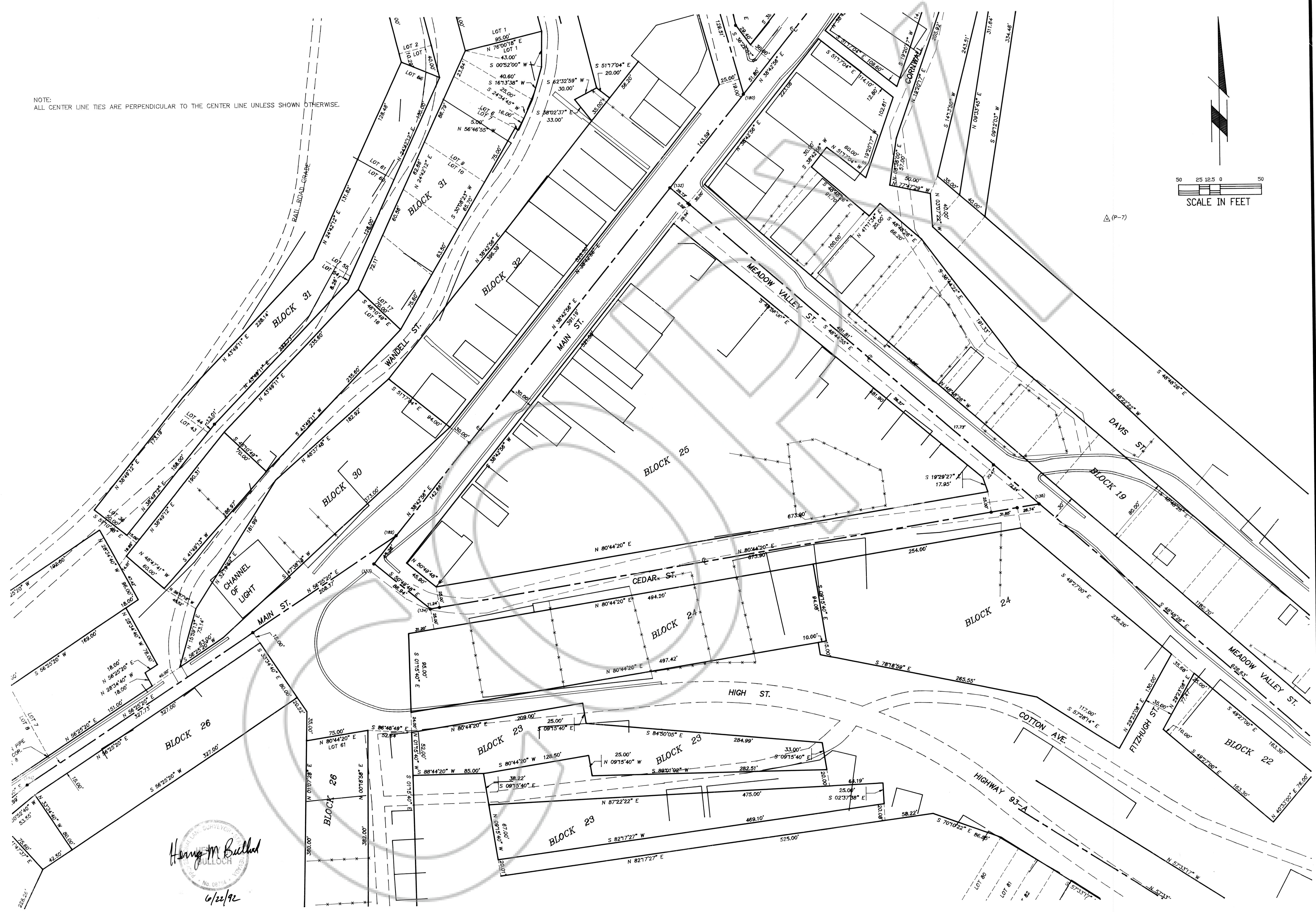
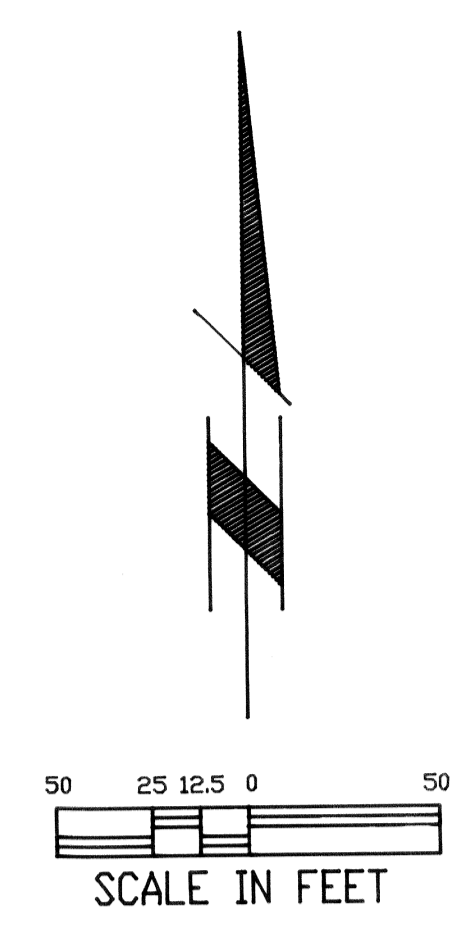
NOTE:  
ALL CENTER LINE TIES ARE PERPENDICULAR TO THE CENTER LINE UNLESS SHOWN OTHERWISE.



*Henry M. Bulloch*  
BULLOCH  
6/22/92

SHEET NO. 5 OF 15 FILE NO. 9-483	TOWN OF PIOCHE TOWN PLAT RE-SURVEY PIOCHE, NEVADA		<b>BULLOCH BROTHERS ENGINEERING INC.</b> CIVIL ENGINEERS—LAND SURVEYORS—LAND PLANNERS—ARCHITECTS P.O. BOX 925 CEDAR CITY, UTAH 84720 (801)586-9592	DATE: 12-31-91 CHECKED: MB/JCN SCALE: 1" = 50' DRAWN: WD/JDS
---	--	--	--	---

NOTE:  
ALL CENTER LINE TIES ARE PERPENDICULAR TO THE CENTER LINE UNLESS SHOWN OTHERWISE.

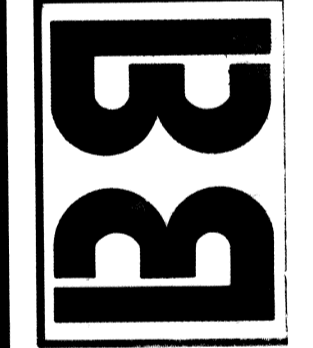


*Harry M. Bulloch*  
HARRY M. BULLOCH  
No. 06104  
6/22/92

DATE: 12-31-91  
SCALE: 1" = 50'

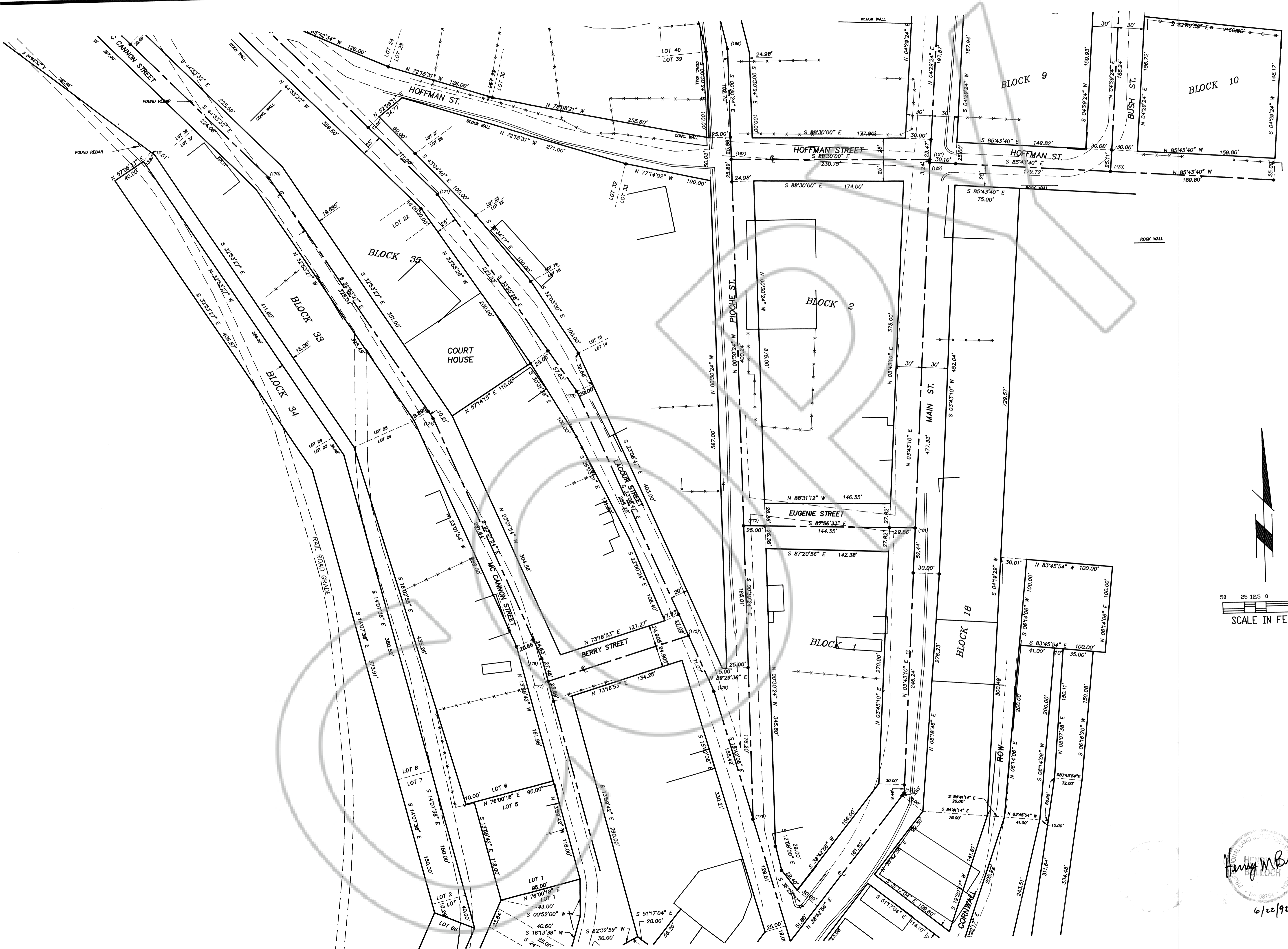
DRAWN: WD/JJS  
CHECKED: MB

**BULLOCH BROTHERS ENGINEERING INC.**  
CIVIL ENGINEERS—LAND SURVEYORS—LAND PLANNERS—ARCHITECTS  
P.O. BOX 925  
CEDAR CITY, UTAH 84770  
MESQUITE, (702)346-5101  
ST. GEORGE, UTAH 84770  
GEORGETOWN, (410)368-4700



**TOWN OF PIOCHE**  
**TOWN PLAT**  
**RE-SURVEY**  
NEVADA  
PIOCHE,

SHEET NO. 6 OF 15  
FILE NO. 4-483



NOTE:  
ALL CENTER LINE TIES ARE PERPENDICULAR TO THE CENTER LINE UNLESS SHOWN OTHERWISE.

*Henry M. Bullock*  
 HENRY M. BULLOCK  
 6/22/92

DATE: 12-31-91

SCALE: 1" = 50'

DRAWN: W/D/JDS

CHECKED: MB/JCN

**BULLOCH BROTHERS ENGINEERING INC.**  
 CIVIL ENGINEERS—LAND SURVEYORS—LAND PLANNERS—ARCHITECTS  
 P.O. BOX 925  
 WEST ST. GEORGE BLVD.  
 CEDAR CITY, UTAH 84720  
 MESQUITE, NEVADA 89024  
 (801)566-9592 (801)628-4700 (702)346-5101

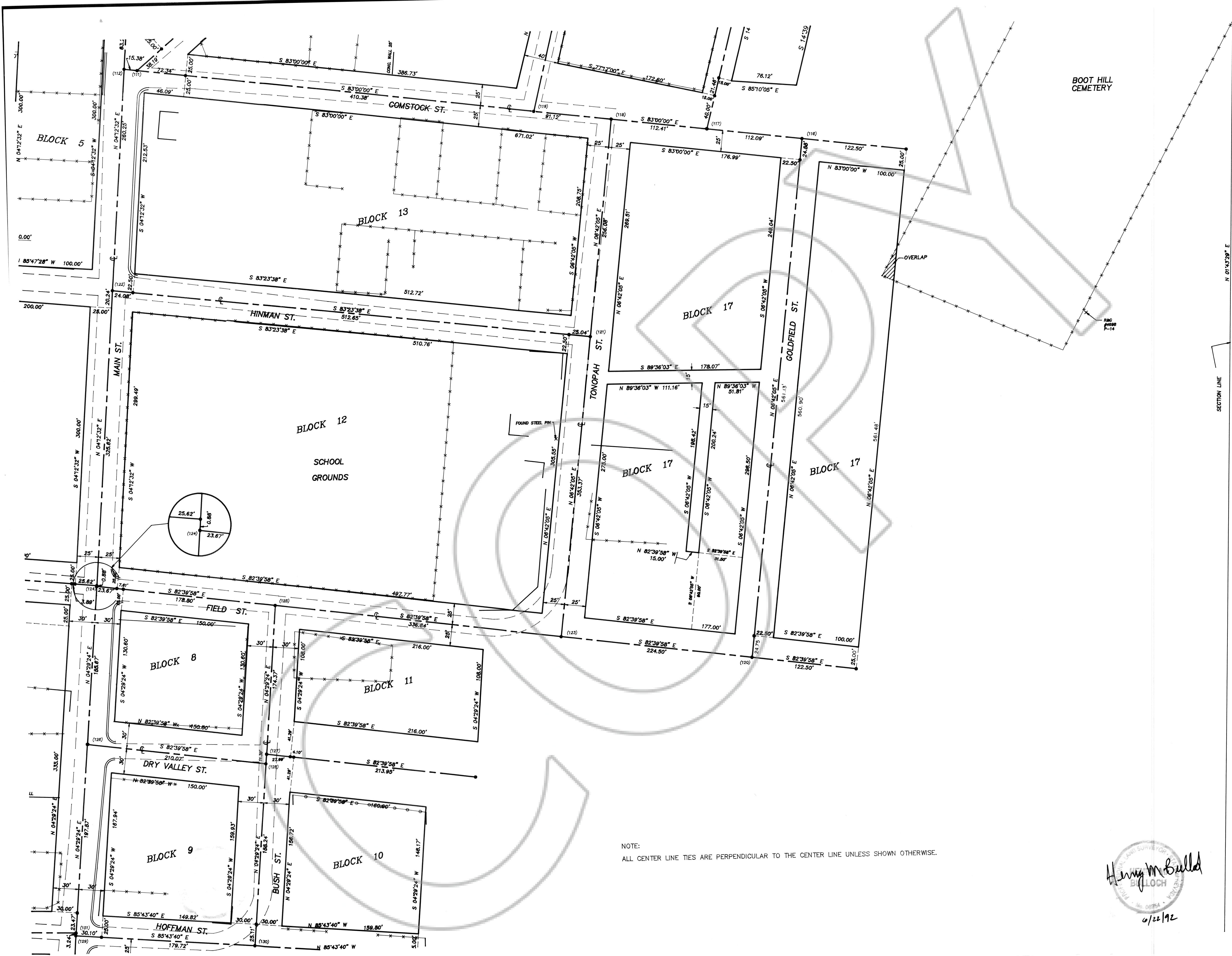


TOWN OF PIOCHE  
 TOWN PLAT  
 RE-SURVEY

NEVADA

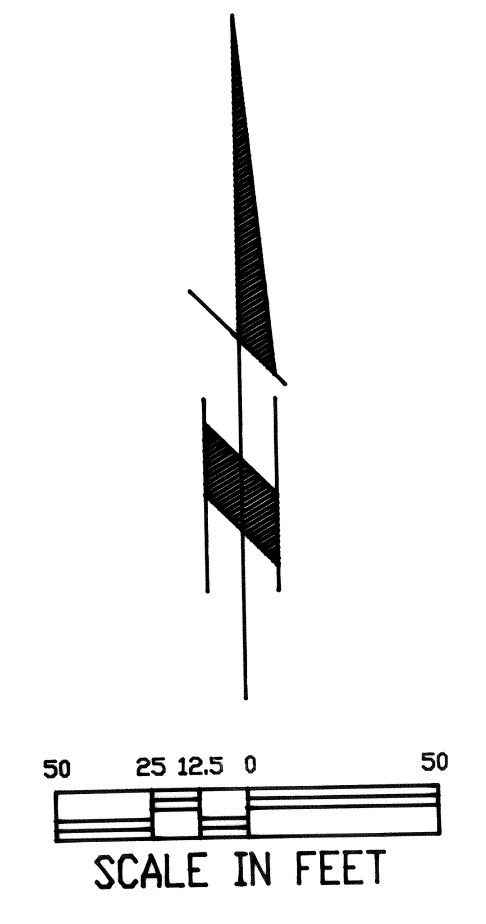
PIOCHE,

SHEET NO. 7 OF 15  
 FILE NO. 9-483



NOTE:  
ALL CENTER LINE TIES ARE PERPENDICULAR TO THE CENTER LINE UNLESS SHOWN OTHERWISE.

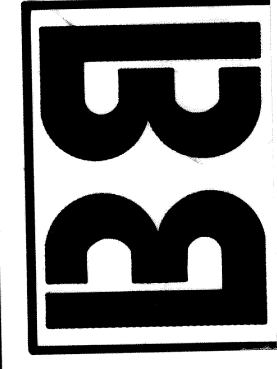
*Henry M. Bullock*  
BULOCH  
0/22/192



DATE: 12-31-91  
CHECKED: MB/JCN

SCALE: 1" = 50'  
DRAWN: W/D/JDS

**BULOCH BROTHERS ENGINEERING INC.**  
CIVIL ENGINEERS—LAND SURVEYORS—LAND PLANNERS—ARCHITECTS  
P.O. BOX 1405 2 WEST ST. GEORGE BLVD. MESQUITE, NEVADA 89054  
CEDAR CITY, UTAH 84720 ST. GEORGE, UTAH 84770  
(801)586-9592 (801)628-4700 (702)346-5101



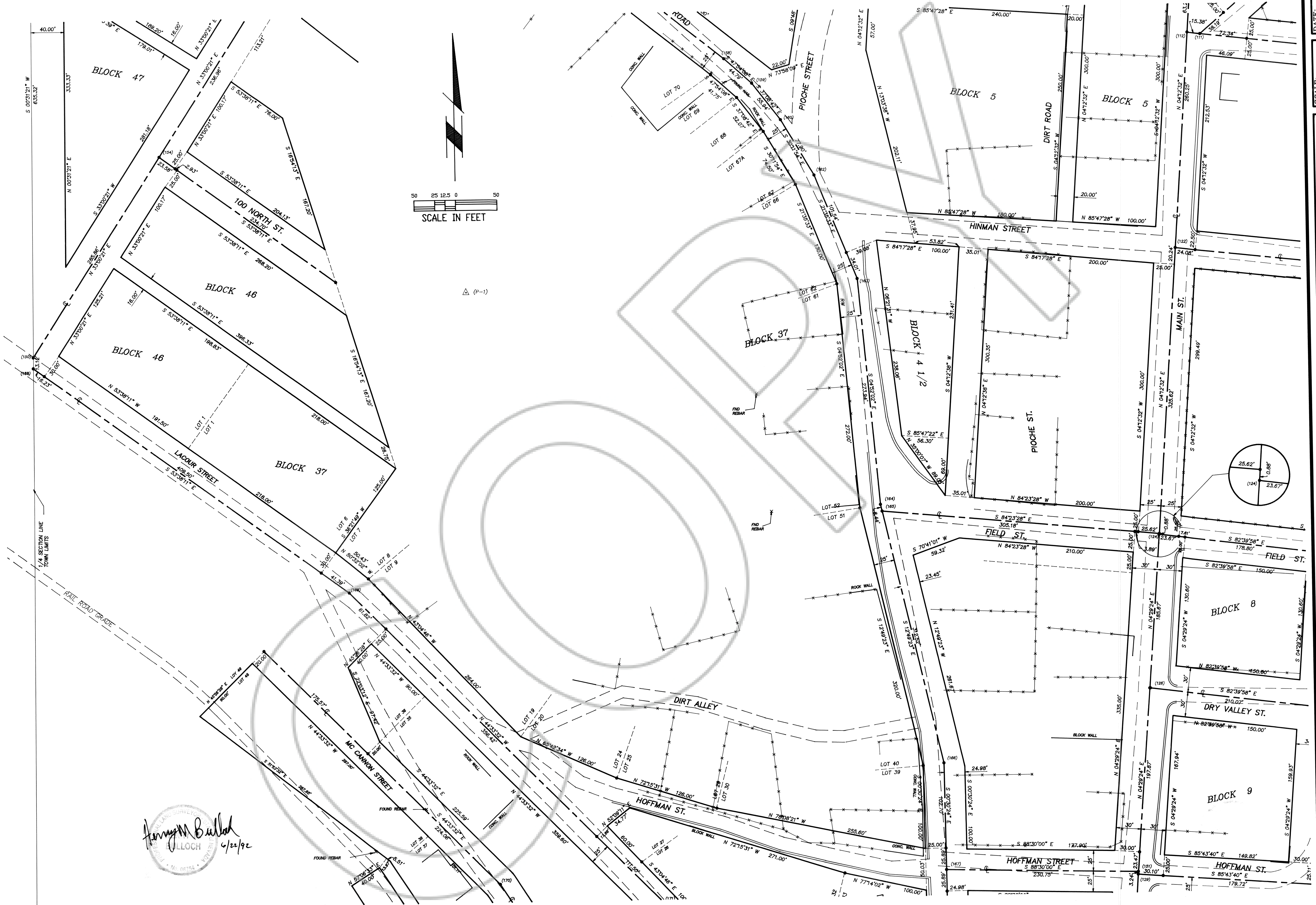
TOWN OF PIOCHE  
TOWN PLAT  
RE-SURVEY

NEVADA

PIOCHE,

SHEET NO. 8 OF 15  
FILE NO. 9-483

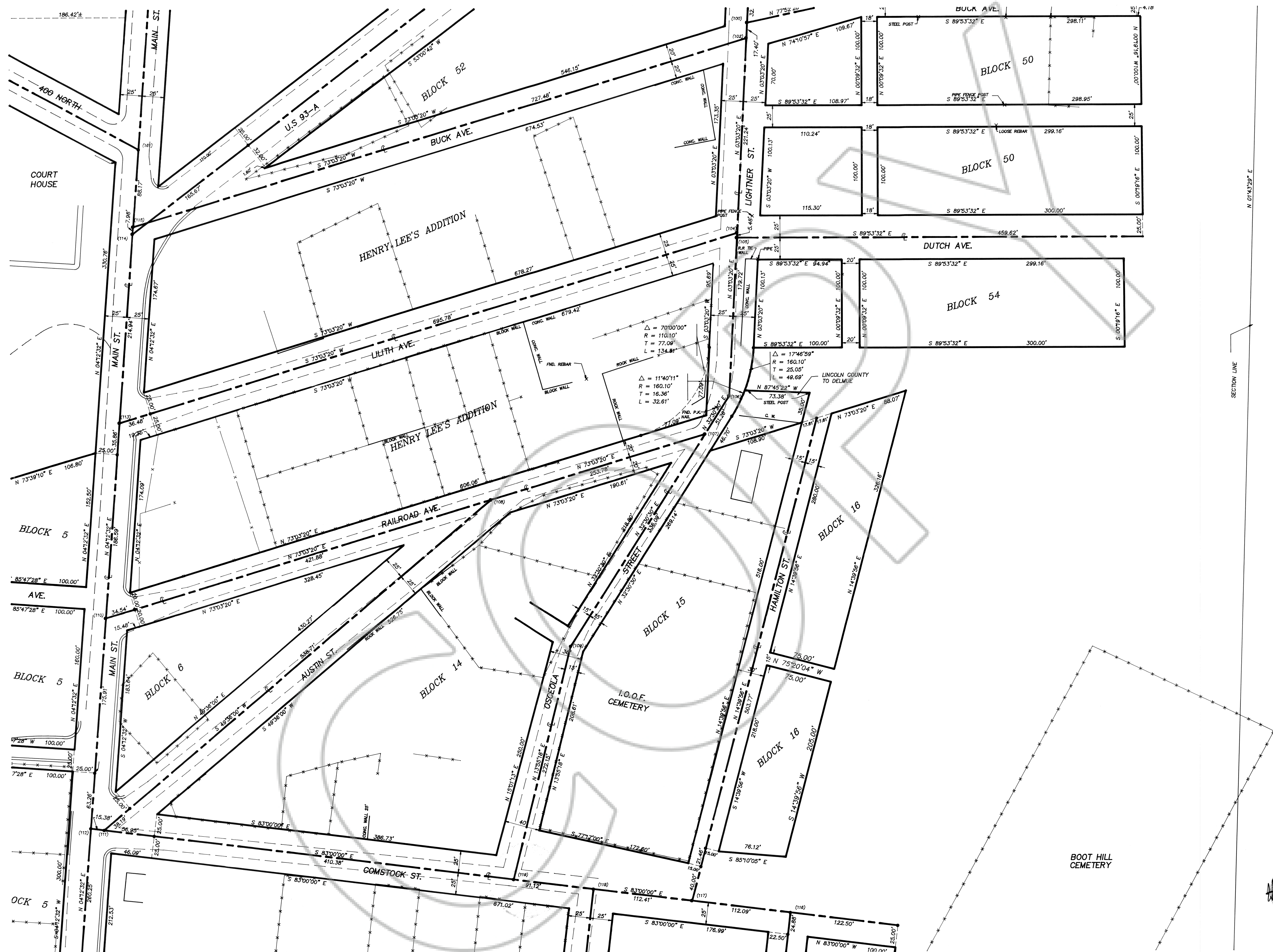




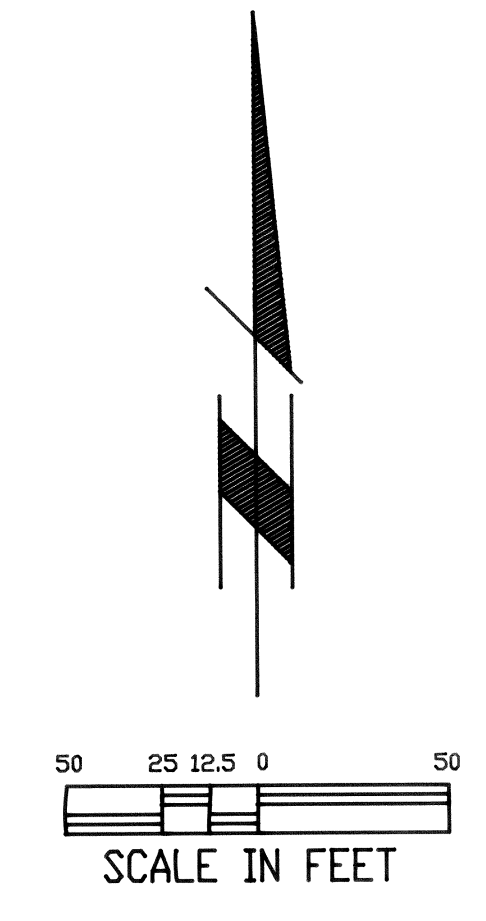
*Harry M. Bullock*  
 BULLOCH  
 6/22/92

SECRET NO. 9 OF 15 FILE NO. 4483	TOWN OF PIOCHE TOWN PLAT RE-SURVEY PIOCHE, NEVADA	<b>B</b> <b>BULLOCH BROTHERS ENGINEERING INC.</b> CIVIL ENGINEERS—LAND SURVEYORS—LAND PLANNERS—ARCHITECTS P.O. BOX 1405 2. WEST ST. GEORGE BLVD. CEDAR CITY, UTAH 84720 (801)586-9592 MESQUITE, NEVADA 89054 (702)346-5101	DATE: 12-31-91
			CHECKED: MB/JCN
		SCALE: 1" = 50'	DRAWN: W/D/JDS

NOTE:  
ALL CENTER LINE TIES ARE PERPENDICULAR TO THE CENTER LINE UNLESS SHOWN OTHERWISE.

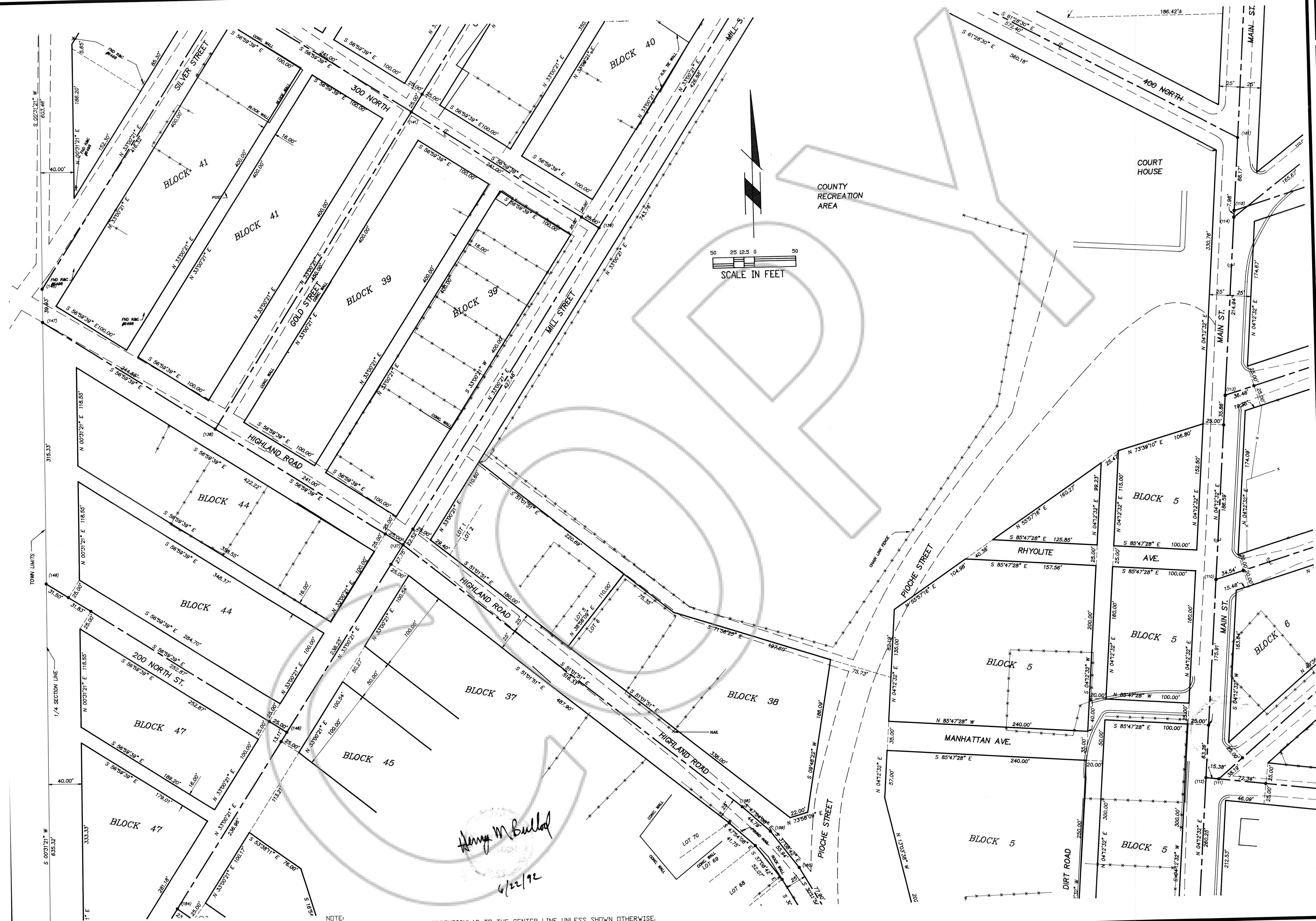


NOTE:  
ALL CENTER LINE TIES ARE PERPENDICULAR TO THE CENTER LINE UNLESS SHOWN OTHERWISE.



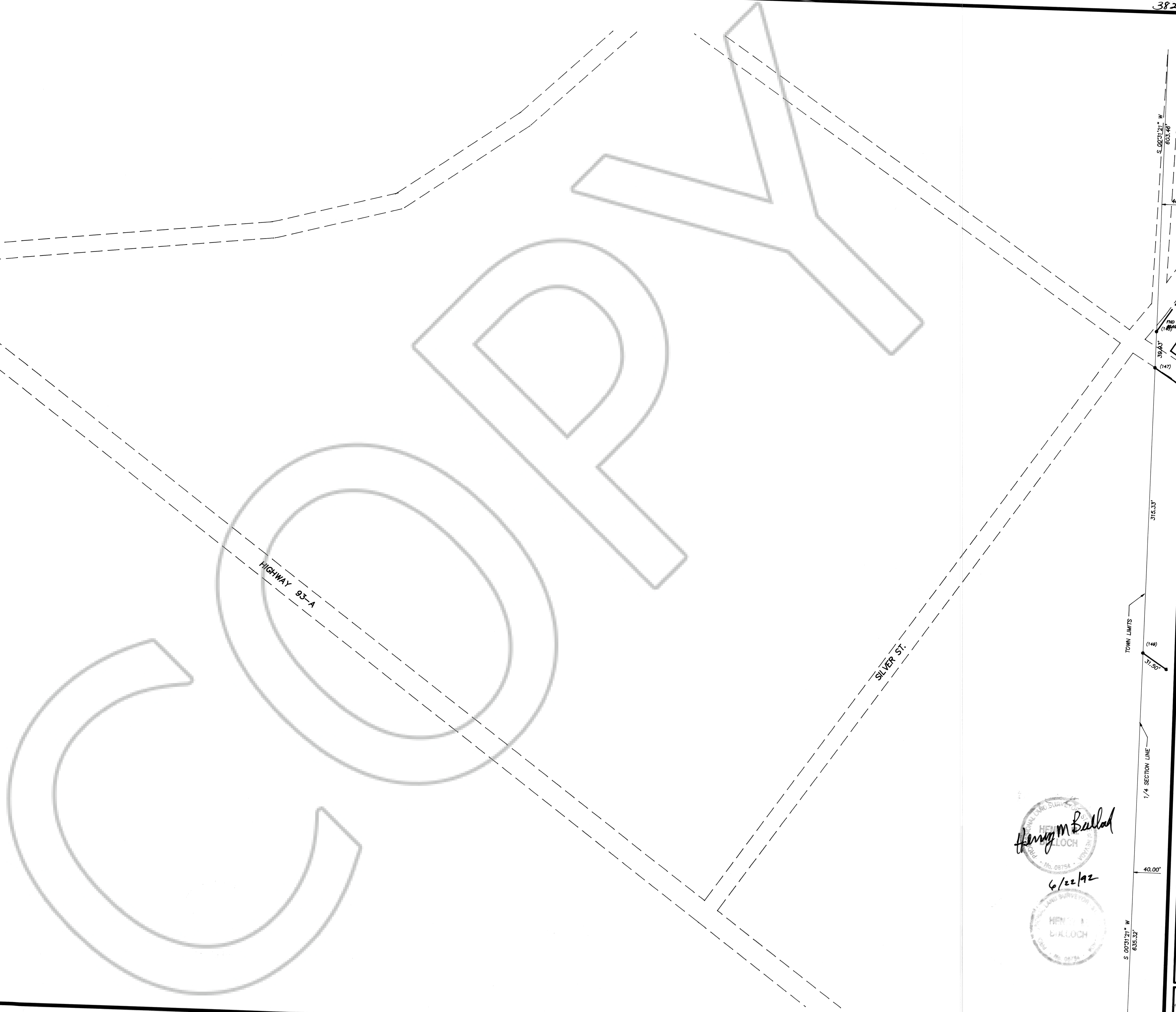
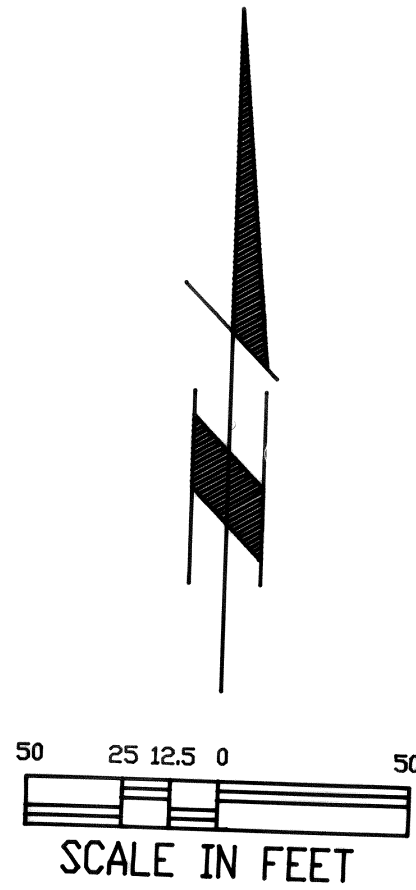
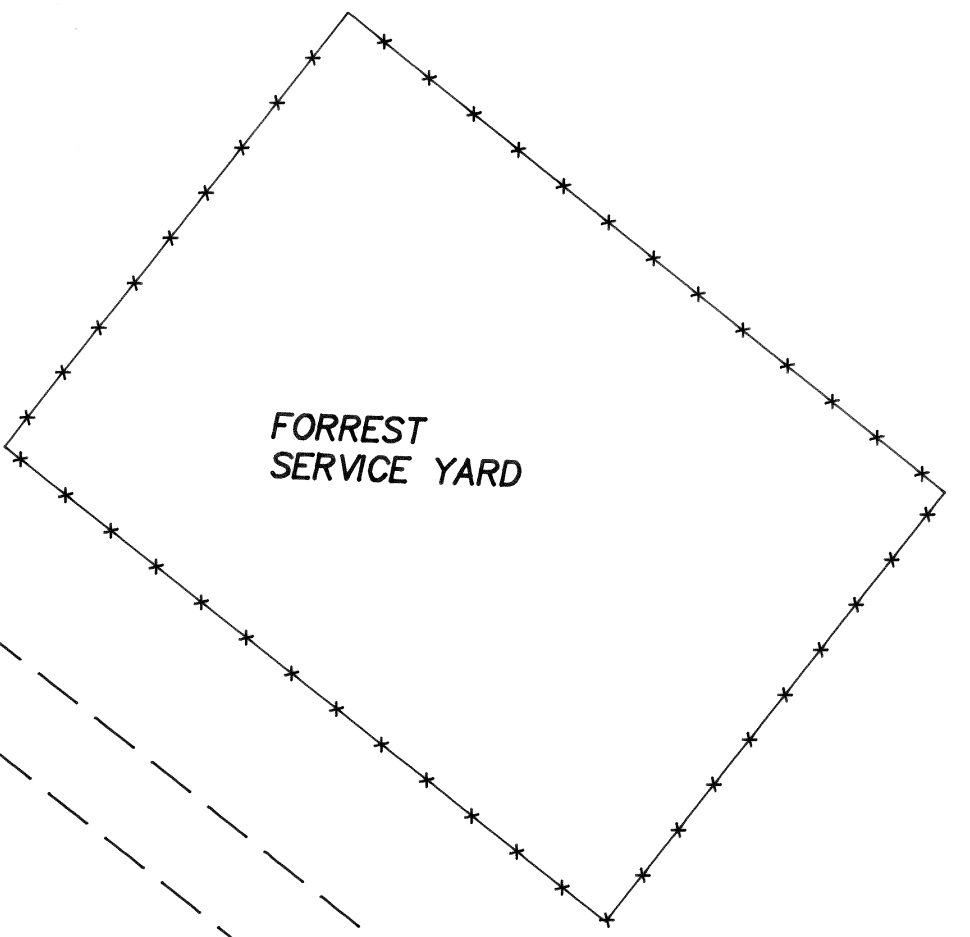
*Henry M. Bulloch*  
BULLOCH  
6/22/92

<b>BULLOCH BROTHERS ENGINEERING INC.</b> CIVIL ENGINEERS—LAND SURVEYORS—LAND PLANNERS—ARCHITECTS P.O. BOX 1405 CEDAR CITY, UTAH 84770 (801)566-9592	DATE: 12-31-91 SCALE: 1" = 50' DRAWN: WD/JDS CHECKED: MB/JCN
	TOWN OF PIOCHE TOWN PLAT RE-SURVEY PIOCHE, NEVADA



NOTE:  
ALL CENTER LINE TIES ARE PERPENDICULAR TO THE CENTER LINE UNLESS SHOWN OTHERWISE.

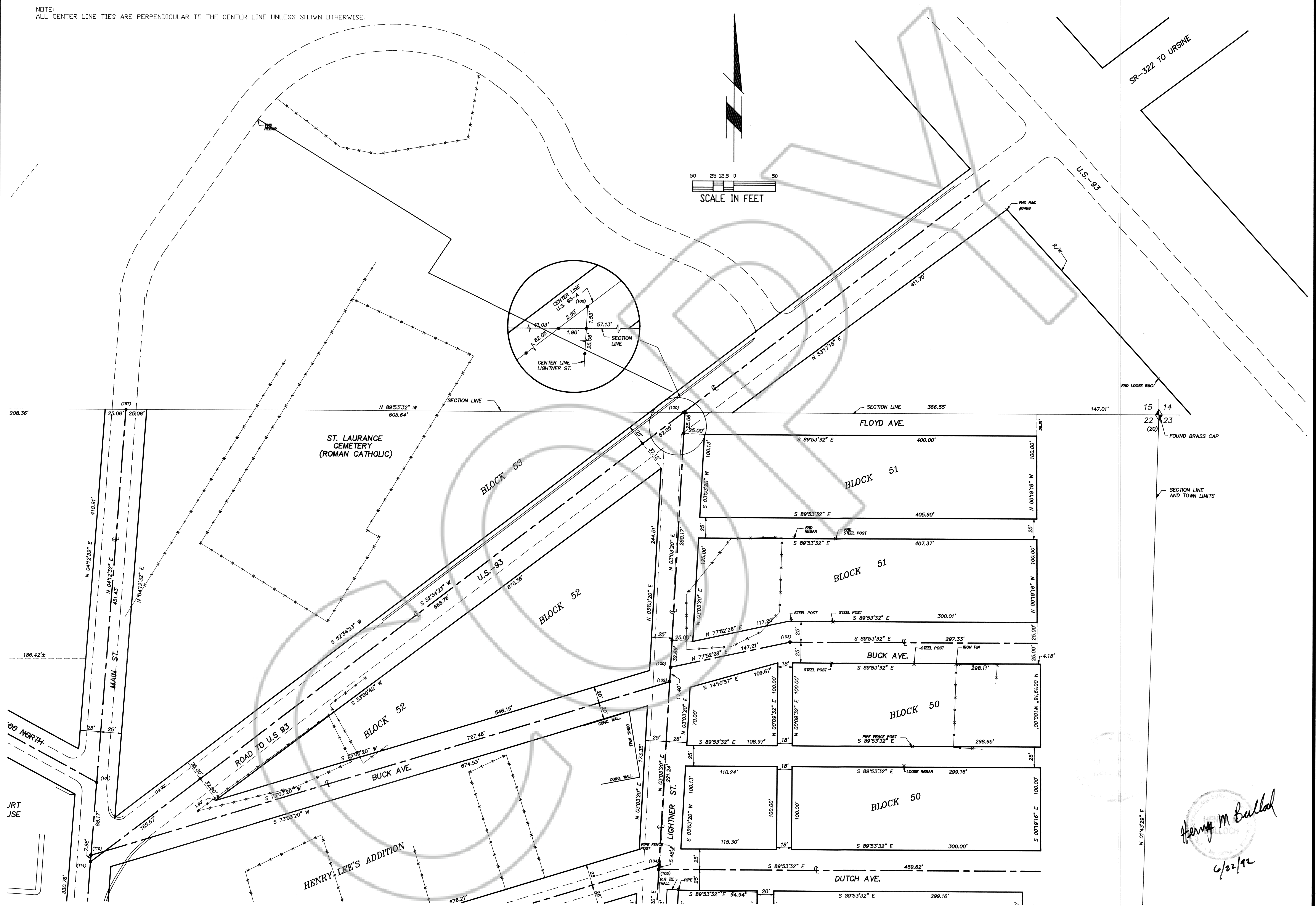
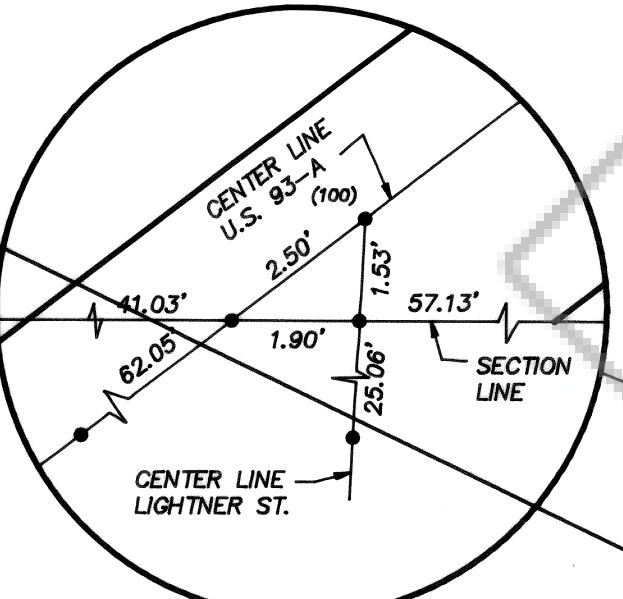
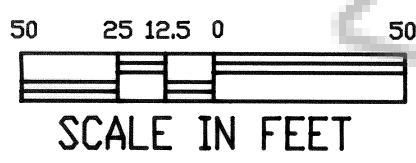
SECRET NO.	11 OF 15	FILE NO.	9-483
TOWN OF PIOCHE TOWN PLAT RE-SURVEY			
NEVADA PIOCHE,			
<b>B</b>			
<b>BULLOCH BROTHERS ENGINEERING INC.</b> CIVIL ENGINEERS—LAND SURVEYORS—LAND PLANNERS—ARCHITECTS P.O. BOX 1405    2 WEST ST.    GEORGE BLVD. CEDAR CITY, UTAH 84770    MESQUITE, NEVADA 89024 (801)586-9592    (801)346-5101			
DATE:	12-31-91	CHECKED:	MB/JCN
SCALE:	1" = 50'	DRAWN:	WD/JDS



*Henry M Bulloch*  
6/22/92

SHEET NO. 12 OF 15 PLAN NO. 9-483	<b>TOWN OF PIOCHE</b> <b>TOWN PLAT</b> <b>RE-SURVEY</b> PIOCHE, NEVADA		<b>BULLOCH BROTHERS ENGINEERING INC.</b> CIVIL ENGINEERS—LAND SURVEYORS—LAND PLANNERS—ARCHITECTS P.O. BOX 1405 CEDAR CITY, UTAH 84720 (801)566-9592 P.O. BOX 983 ST. GEORGE, UTAH 84770 (801)628-4700 MESQUITE, NEVADA 89054 (702)346-5101	DATE: 12-31-91 SCALE: 1" = 50' DRAWN: WD/JJS CHECKED: MB/JCN
--	--	--	--	---

NOTE:  
ALL CENTER LINE TIES ARE PERPENDICULAR TO THE CENTER LINE UNLESS SHOWN OTHERWISE.



*Henry M. Bullock*  
6/22/92

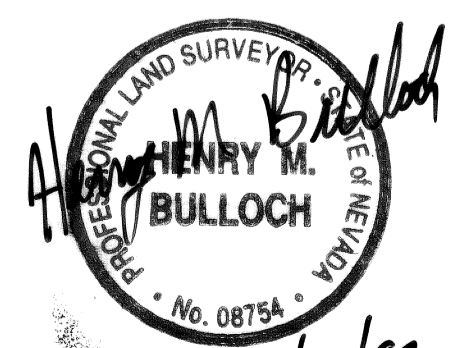
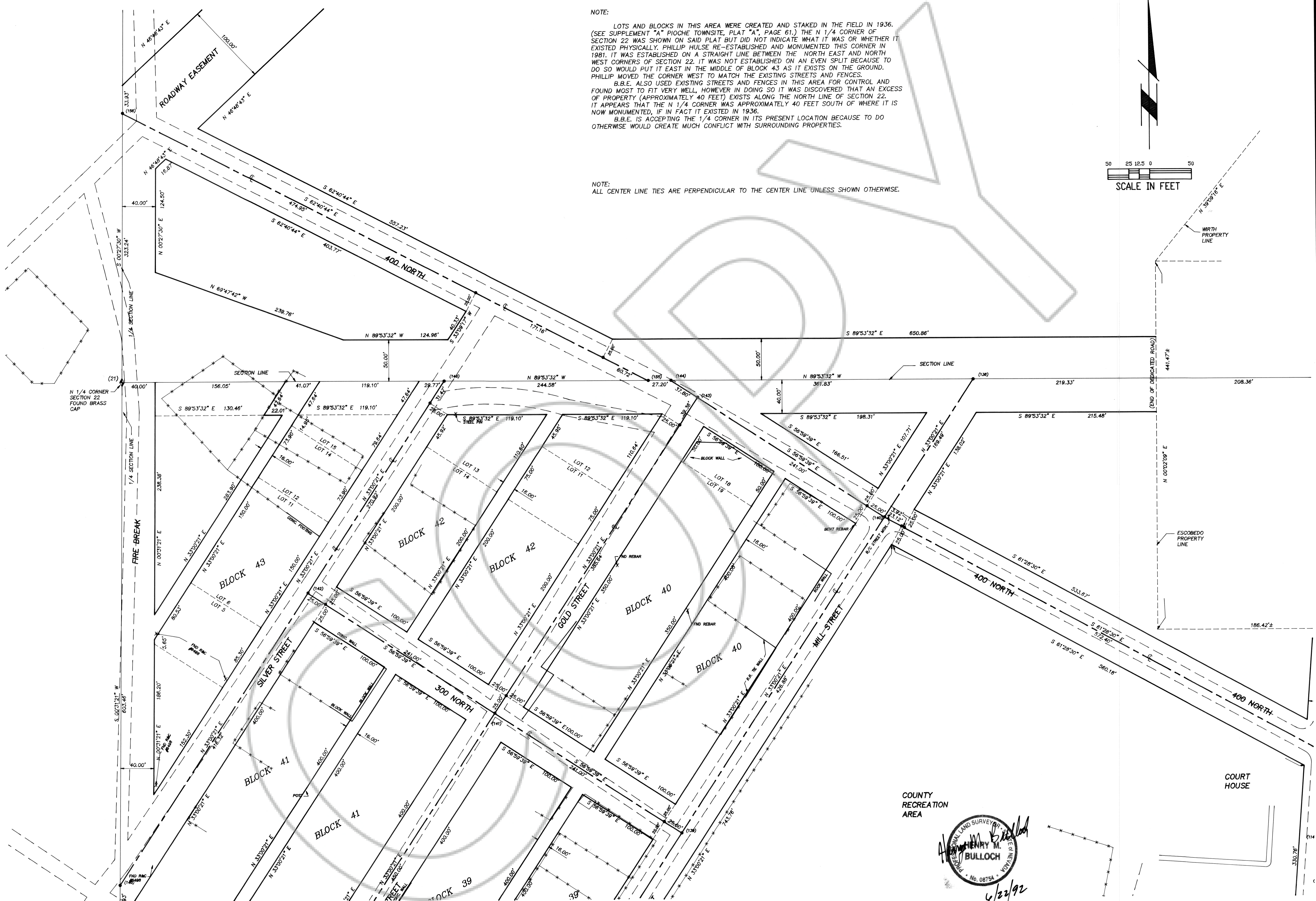
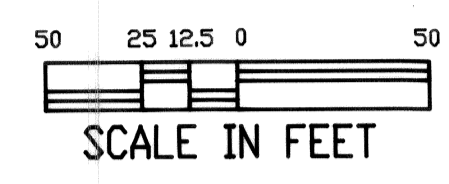
DATE:	12-31-91
CHECKED:	MB/JCN
SCALE:	1" = 50'
DRAWN:	WDJDS
<b>BULLOCH BROTHERS ENGINEERING INC.</b> CIVIL ENGINEERS—LAND SURVEYORS—LAND PLANNERS—ARCHITECTS P.O. BOX 1405 CEDAR CITY, UTAH 84720 P.O. BOX 928 MESQUITE, NEVADA 89024 ST. GEORGE, UTAH 84770 (801)628-4700 (801)628-9592	
<b>TOWN OF PICOHE</b> <b>TOWN PLAT</b> <b>RE-SURVEY</b> NEVADA PICOHE,	
SECRET NO.	13 OF 15
FILE NO.	9-483

NOTE:

LOTS AND BLOCKS IN THIS AREA WERE CREATED AND STAKED IN THE FIELD IN 1936. (SEE SUPPLEMENT "A" PIOCHE TOWNSITE, PLAT "A", PAGE 61.) THE N 1/4 CORNER OF SECTION 22 WAS SHOWN ON SAID PLAT BUT DID NOT INDICATE WHAT IT WAS OR WHETHER IT EXISTED PHYSICALLY. PHILLIP HULSE RE-ESTABLISHED AND MONUMENTED THIS CORNER IN 1981. IT WAS ESTABLISHED ON A STRAIGHT LINE BETWEEN THE NORTH EAST AND NORTH WEST CORNERS OF SECTION 22. IT WAS NOT ESTABLISHED ON AN EVEN SPLIT BECAUSE TO DO SO WOULD PUT IT EAST IN THE MIDDLE OF BLOCK 43 AS IT EXISTS ON THE GROUND. PHILLIP MOVED THE CORNER WEST TO MATCH THE EXISTING STREETS AND FENCES. B.B.E. ALSO USED EXISTING STREETS AND FENCES IN THIS AREA FOR CONTROL AND FOUND MOST TO FIT VERY WELL, HOWEVER IN DOING SO IT WAS DISCOVERED THAT AN EXCESS OF PROPERTY (APPROXIMATELY 40 FEET) EXISTS ALONG THE NORTH LINE OF SECTION 22. IT APPEARS THAT THE N 1/4 CORNER WAS APPROXIMATELY 40 FEET SOUTH OF WHERE IT IS NOW MONUMENTED, IF IN FACT IT EXISTED IN 1936. B.B.E. IS ACCEPTING THE 1/4 CORNER IN ITS PRESENT LOCATION BECAUSE TO DO OTHERWISE WOULD CREATE MUCH CONFLICT WITH SURROUNDING PROPERTIES.

NOTE:

ALL CENTER LINE TIES ARE PERPENDICULAR TO THE CENTER LINE UNLESS SHOWN OTHERWISE.



DATE:	12-31-91
SCALE:	1" = 50'
CHECKED:	MB/JCN
DRAWN:	WD/JDS

**BULOCH BROTHERS ENGINEERING INC.**  
 CIVIL ENGINEERS—LAND SURVEYORS—LAND PLANNERS—ARCHITECTS  
 P.O. BOX 925  
 2 WEST ST. GEORGE BLVD.  
 CEDAR CITY, UTAH 84720  
 MESQUITE, NEVADA 89024  
 (801)596-9592 (801)596-4700 (702)346-5101

**BB**

TOWN OF PIOCHE  
 TOWN PLAT  
 RE-SURVEY  
 PIOCHE, NEVADA

SECRET NO.	14 OF 15
FILE NO.	9-423

