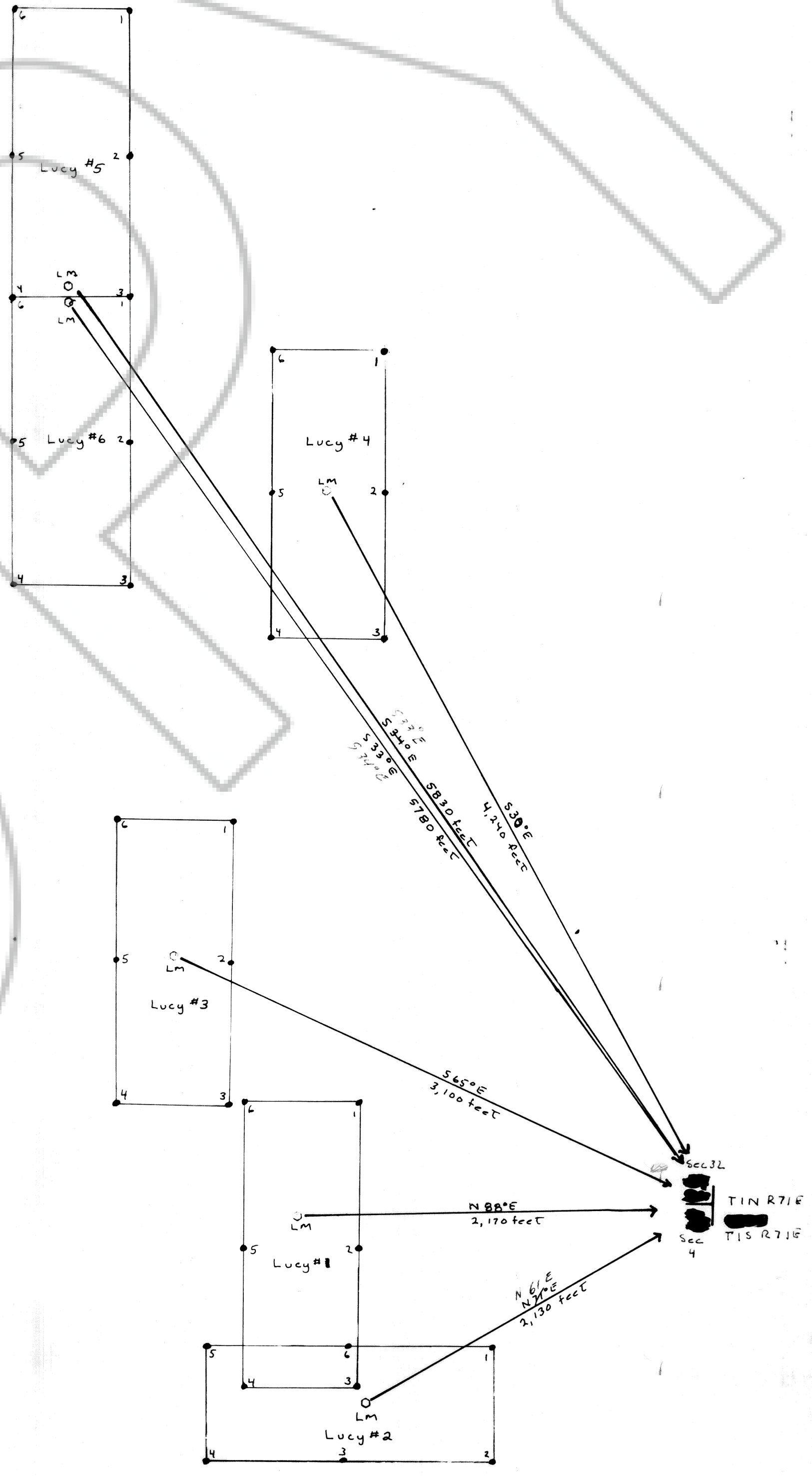


Map of the  
 Lucy Claims  
 T1S R71E Sections 31, 32  
 T1N R71E Sections 37, 38  
 Mt. Diablo Meridian  
 Lincoln County  
 Nevada  
 for  
 Glamis Gold Exploration, Inc.  
 715 Grey St.  
 Sparks, NV 89431  
 by  
 Roger C. Steininger, Agent  
 7/3/92

○ Location Monument  
 ● Corner and side center  
 Scale 1"=500'  
 500'



099549  
 FILED AND RECORDED AT REQUEST OF  
 Glamis Gold Exploration, Inc.  
 October 23, 1992  
 40 MINUTES EAST OF CLIFTON  
 IN BOOK 103 OF OFFICIAL  
 RECORDS, PAGE 635 LINCOLN  
 COUNTY, NEVADA  
 YURIKO SETZER  
 COUNTY CLERK  
 Rhonda Zehner, deputy