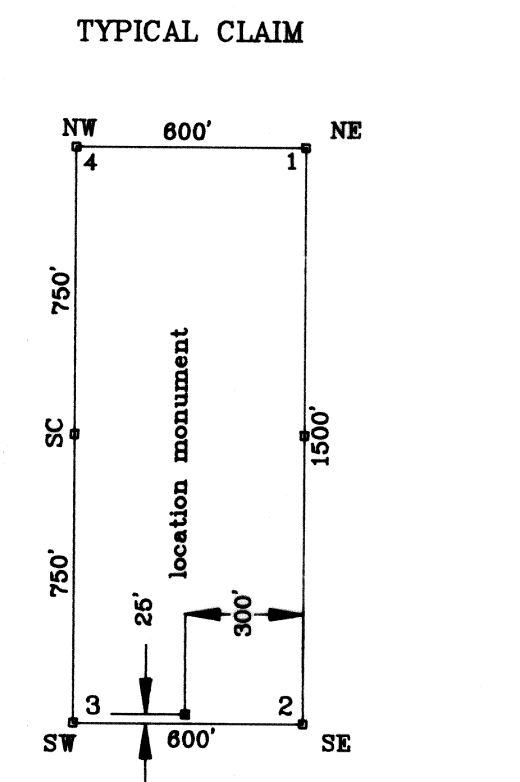
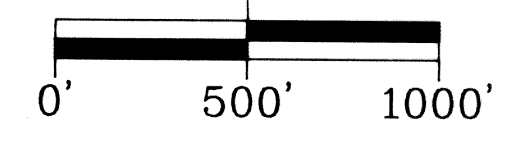
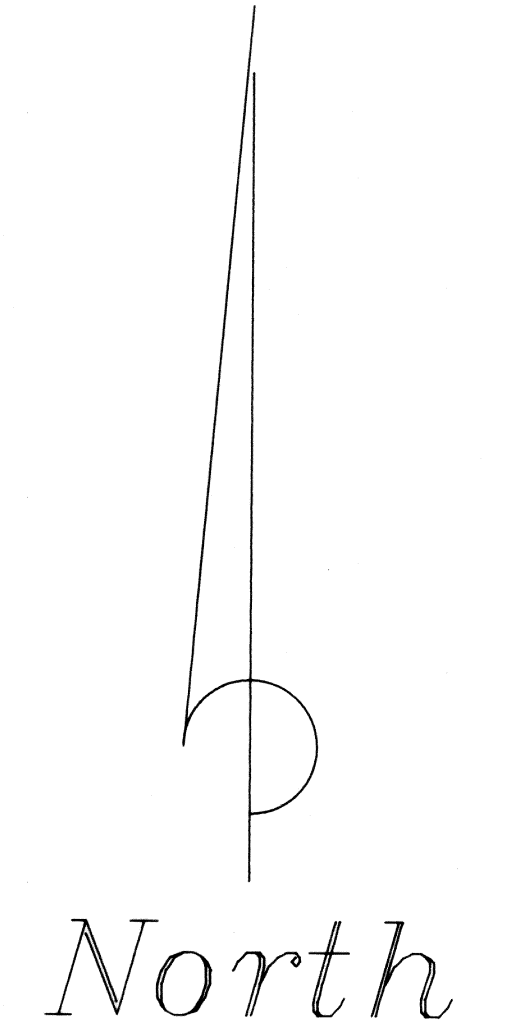
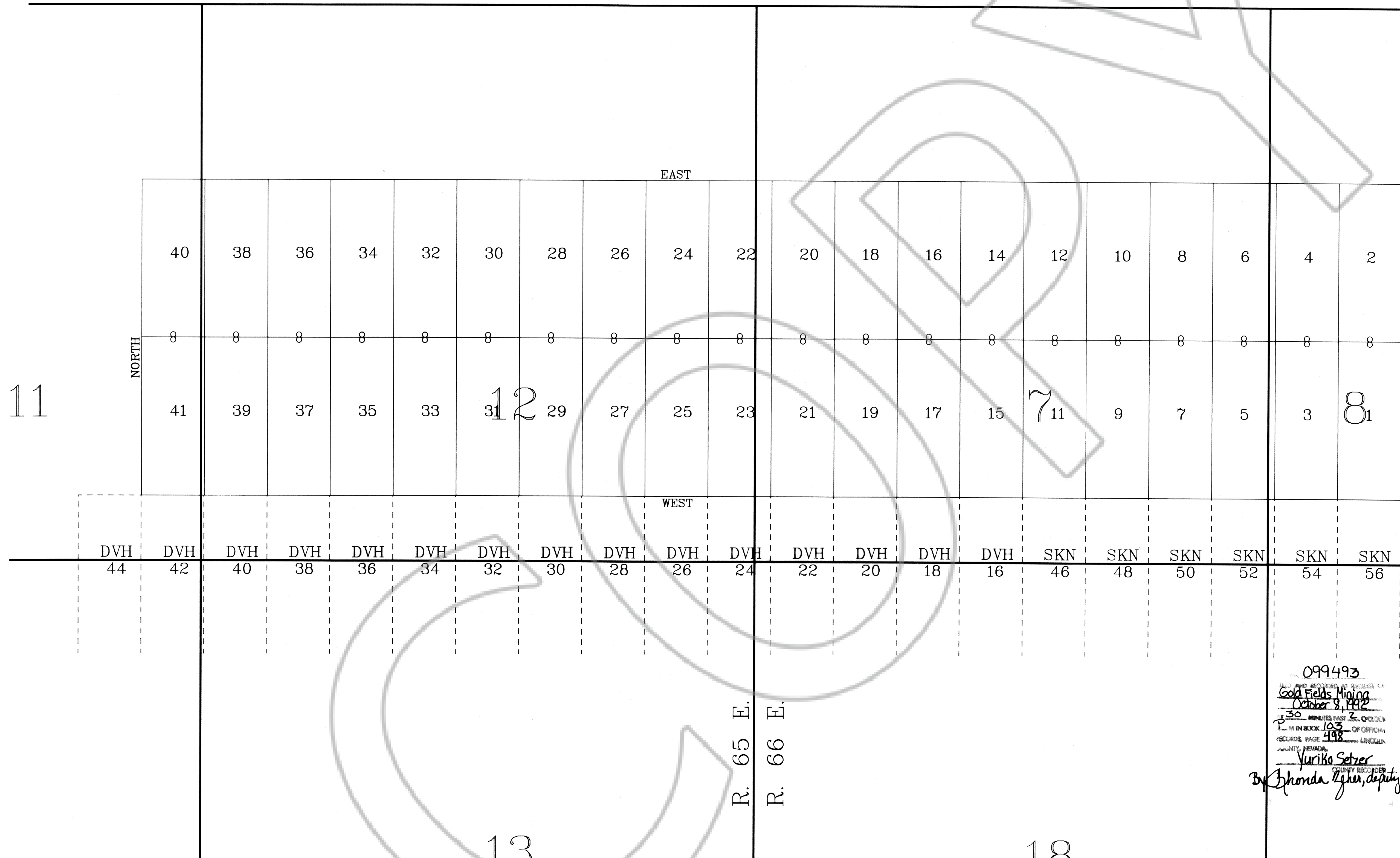


A MAP OF THE SPR LODGE CLAIMS T. 1 N., R. 65 & 66 E., M.D.M. LINCOLN COUNTY, NEVADA



Date of location SPR 1-12 and 14-41 on September 15, 1992.
 NOTE: All section lines are projected.
 NOTE: All corners and location monuments are 4" x 4" wood posts.
 BASIS OF BEARING:
 Magnetic North using 16.5' East declination.
 TIE: The Southeast corner of SPR 1 bears North 5900 ft. and East 3900 ft. from the North 1/4 Cor. Sec. 19, T. 1 N., R. 66 E., M.D.M.

099493
 FILED AND RECORDED AT REQUEST OF
 Gold Fields Mining
 October 8, 1992
 30 MINUTES EAST 2
 1-11 IN BOOK 103 - OF OFFICIAL
 RECORDS, PAGE 498 - LINCOLN
 COUNTY, NEVADA.
 Yuriko Setzer
 COUNTY RECORDER
 By Rhonda Lykes, deputy

GOLD FIELDS MINING COMPANY	
1687 Cole Blvd., Golden, Colorado 80401-3301	
SURVEYED BY	DATE
E. E. SCHAAF & ASSOCIATES	10-8-92
DRAWN BY	SCALE
E. E. S.	1" = 500'
ACCT. NO.	SHEET
J9248E2	1 OF 1