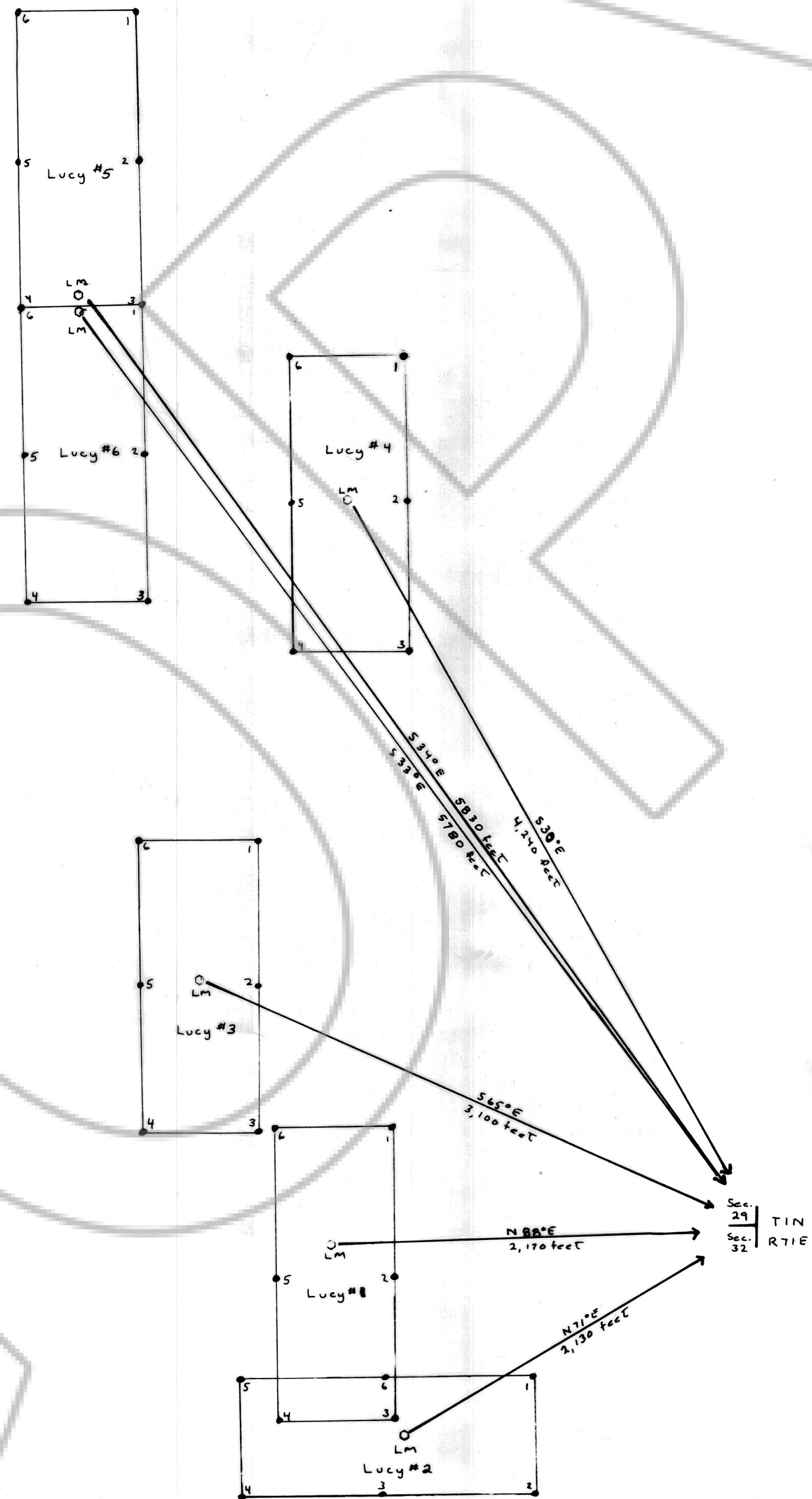


Map of the
Lucy Claims
T1N, R71E, Sections 20, 27, & 32
Mt. Diablo Meridian
Lincoln County
Nevada
for
Glamis Gold Exploration, Inc.
715 Grey St.
Sparks, NV 89431
by
Roger C. Steininger, Agent
7/3/92



○ Location Monument
● Corner and side center
Scale 1"=500'

500'



No. 098697
FILED AND RECORDED AT REQUEST OF
GLAMIS GOLD EXPL. INC.
JULY 17, 1992
AT 15 MINUTES PAST 3 O'CLOCK
P.M. IN BOOK 102 OF OFFICIAL
RECORDS, PAGE 20 LINCOLN
COUNTY, NEVADA.
Guillermo Delgado
COUNTY CLERK