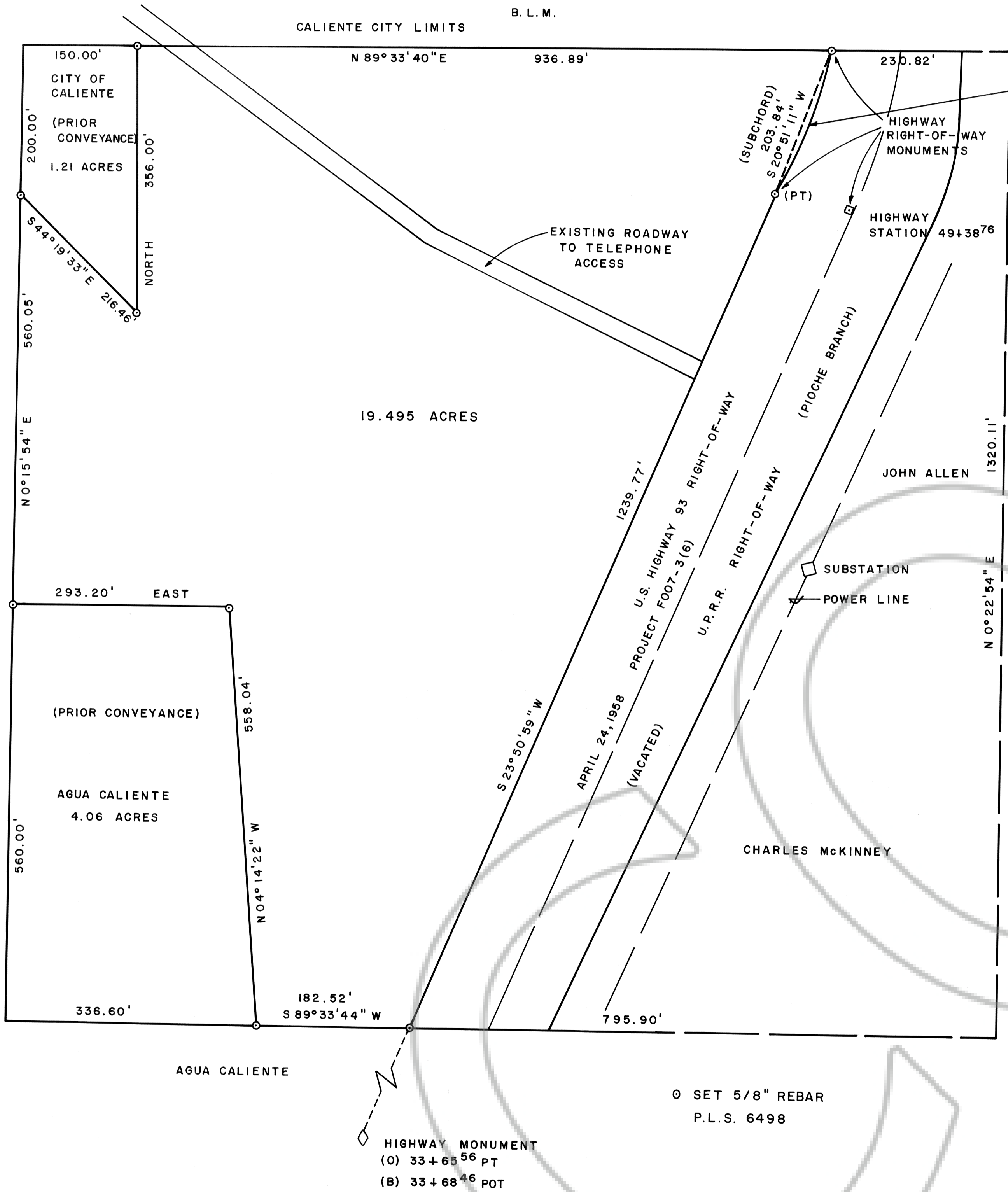


NE 1/4 OF THE SW 1/4 SECTION 5, T4S, R67E, M.D.B. & M.

SURVEYOR'S STATEMENT

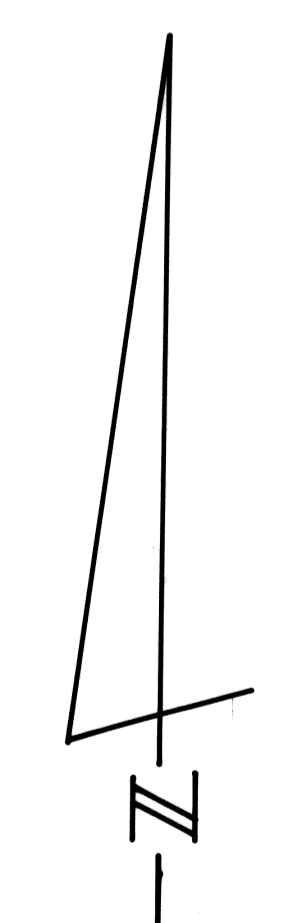
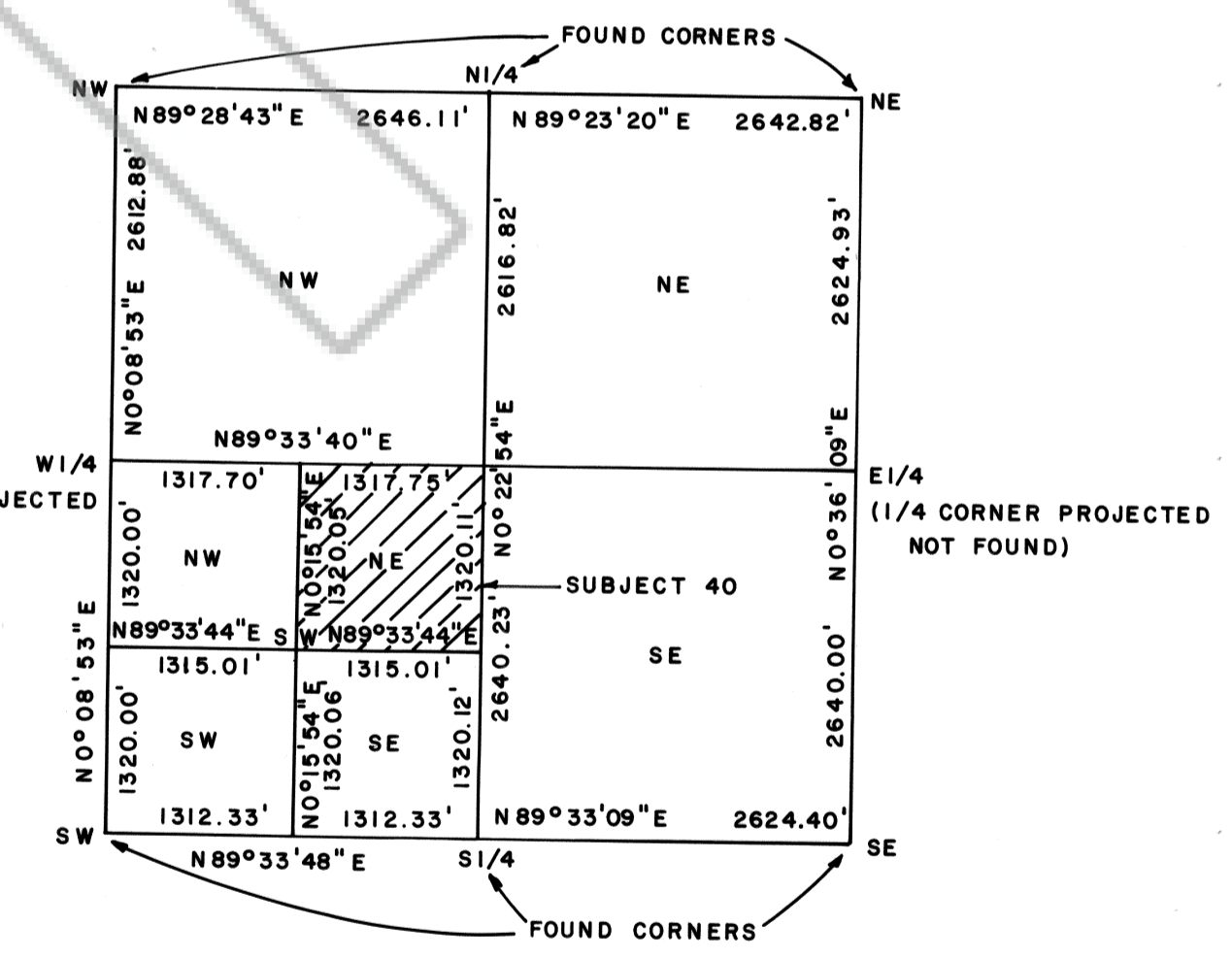
I, Frank C. Hulse, a Professional Land Surveyor within the State of Nevada, do hereby certify that this Record of Survey consisting of one sheet correctly and accurately delineates a survey made by me at the request of Agua Caliente. All monuments are of the character noted and occupy the positions shown and are sufficient for the survey to be retraced. This survey was completed on the 20th day of February, 1992, and conforms to the definitions and provisions of N. R. S. 625.340 thru 625.380, inclusive.

PROFESSIONAL LAND SURVEYOR
FRANK C. HULSE
STATE OF NEVADA
26 FEB 92
Frank C. Hulse P.L.S. 6498

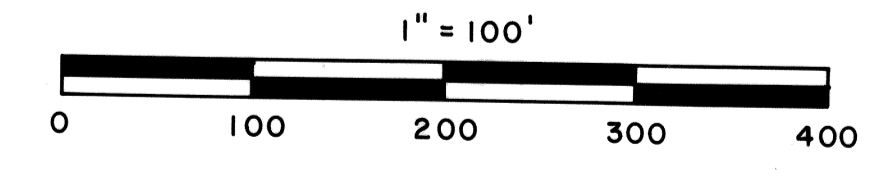


CURVE DATA
Δ = 15° 19' 00"
R = 1950.00'
(PROPERTY LINE)
LC = 534.65'
TANG = 268.93' (CL)

VICINITY MAP
SECTION 5, T4S, R67E, M.D.B. & M.



BASIS OF BEARING: CALIENTE GRID COORDINATE SYSTEM



098093
RECORDED AT REQUEST OF
HULSE ENGR.
FEB 27, 1992
50 MINUTES PAST 11
A.M. PLATA
369
Yuriko Setzer

RECORD OF SURVEY OF THE NE 1/4 OF THE SW 1/4, SECTION 5, T4S, R67E, M.D.B. & M. PREPARED AT THE INSTANCE OF AGUA CALIENTE.

FRANK C. HULSE/s.f. FEBRUARY 1992